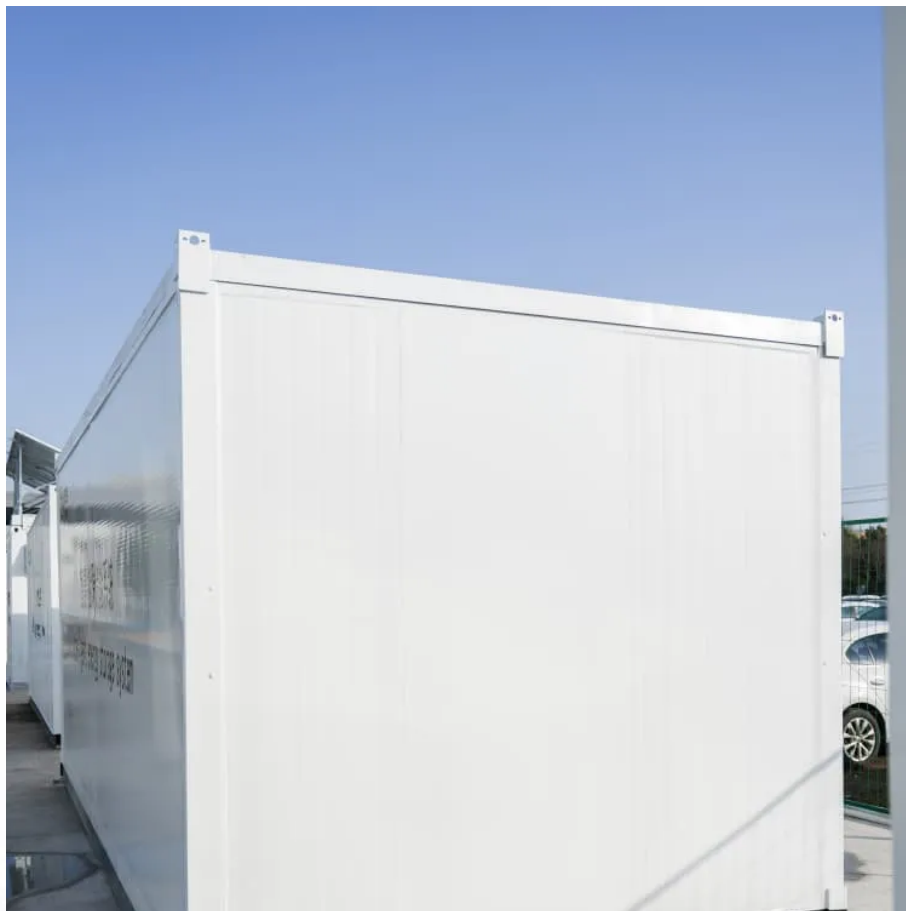


**It is true that 5G base stations
consume a lot of power**





Overview

Are 5G base stations causing more energy consumption?

However, Li says 5G base stations are carrying five times the traffic as when equipped with only 4G, pushing up power consumption. The carrier is seeking subsidies from the Chinese government to help with the increased energy usage.

Does China Mobile have a 5G base station?

China Mobile has tried using lower cost deployments of MIMO antennas, specifically 32T32R and sometimes 8T8R rather than 64T64R, according to MTN. However, Li says 5G base stations are carrying five times the traffic as when equipped with only 4G, pushing up power consumption.

How will 5G affect the energy consumption of mobile operators?

Edge compute facilities needed to support local processing and new internet of things (IoT) services will also add to overall network power usage. Exact estimates differ by source, but MTN says the industry consensus is that 5G will double to triple energy consumption for mobile operators, once networks scale.

Should power consumption models be used in 5G networks?

This restricts the potential use of the power models, as their validity and accuracy remain unclear. Future work includes the further development of the power consumption models to form a unified evaluation framework that enables the quantification and optimization of energy consumption and energy efficiency of 5G networks.



It is true that 5G base stations consume a lot of power



[How Much Power Does 5G Base Station Consume?](#)

The Silent Energy Crisis in Mobile Networks Have you ever wondered how much energy our hyper-connected world is consuming? 5G base stations, the backbone of next-gen ...

[Learn More](#)

[What is the Power Consumption of a 5G Base Station?](#)

Why is 5G Power Consumption Higher? 1. Increased Data Processing and Complexity These 5G base stations consume about three times the power of the 4G stations. ...

[Learn More](#)



Optimal energy-saving operation strategy of 5G base station ...

To further explore the energy-saving potential of 5 G base stations, this paper proposes an energy-saving operation model for 5 G base stations that incorporates ...

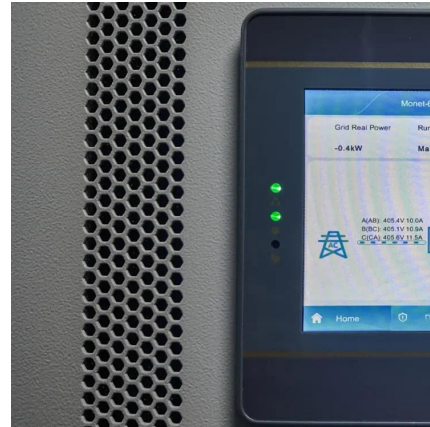
[Learn More](#)



[What is 5G Energy Consumption?](#)

The 5G network is a dynamic system that consumes energy continually and responds to spikes in network activity. Over 70% of this energy is consumed by RAN ...

[Learn More](#)



[Why does 5g base station consume so much ...](#)

The power consumption of the 5G base station mainly comes from the AU module processing and conversion and high power-consuming high radio frequency signals, the extremely high-algorithm and high ...

[Learn More](#)



[5G base stations use a lot more energy than ...](#)

Warnings of more power consumption are coming from some Chinese operators that are leading the world in 5G deployments. In November 2019, China Mobile EVP Li Zhengmao said that its electricity ...

[Learn More](#)



Comparison of Power Consumption Models for 5G Cellular Network Base

This paper conducts a literature survey of relevant power consumption models for 5G cellular network base stations and provides a comparison of the models. It highlights ...

[Learn More](#)

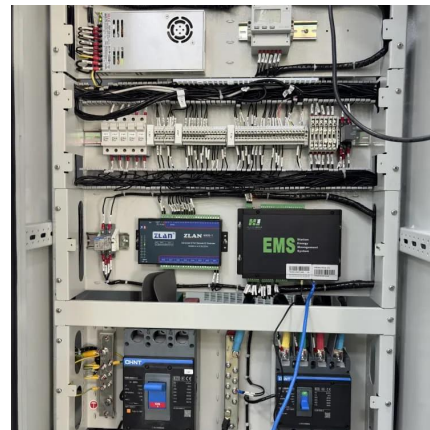




5G base stations use a lot more energy than 4G base stations...

Warnings of more power consumption are coming from some Chinese operators that are leading the world in 5G deployments. In November 2019, China Mobile EVP Li ...

[Learn More](#)



[Energy Management of Base Station in 5G and B5G: Revisited](#)

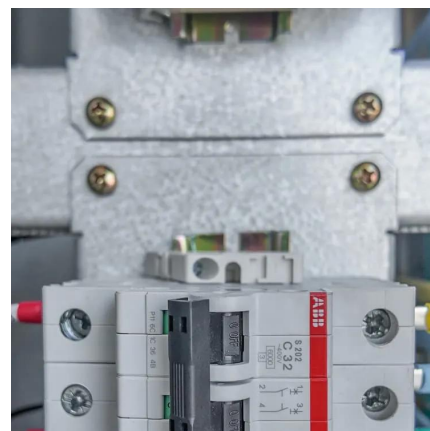
Since mmWave base stations (gNodeB) are typically capable of radiating up to 200-400 meters in urban locality. Therefore, high density of these stations is required for ...

[Learn More](#)

[Power consumption based on 5G communication](#)

At present, 5G mobile traffic base stations in energy consumption accounted for 60% ~ 80%, compared with 4G energy consumption increased three times. In the future, high ...

[Learn More](#)



[Why does 5g base station consume so much power and how ...](#)

The power consumption of the 5G base station mainly comes from the AU module processing and conversion and high power-consuming high radio frequency signals, the ...

[Learn More](#)



What is the reason for the high energy consumption of 5G base ...

Let me explain it to you. The energy consumption of 5G base stations is mainly concentrated in four parts: base stations, transmission, power supply and air conditioning in ...

[Learn More](#)



Contact Us

For catalog requests, pricing, or partnerships, please visit:
<https://fundacjawandea-imk.pl>

Scan QR Code for More Information



<https://fundacjawandea-imk.pl>