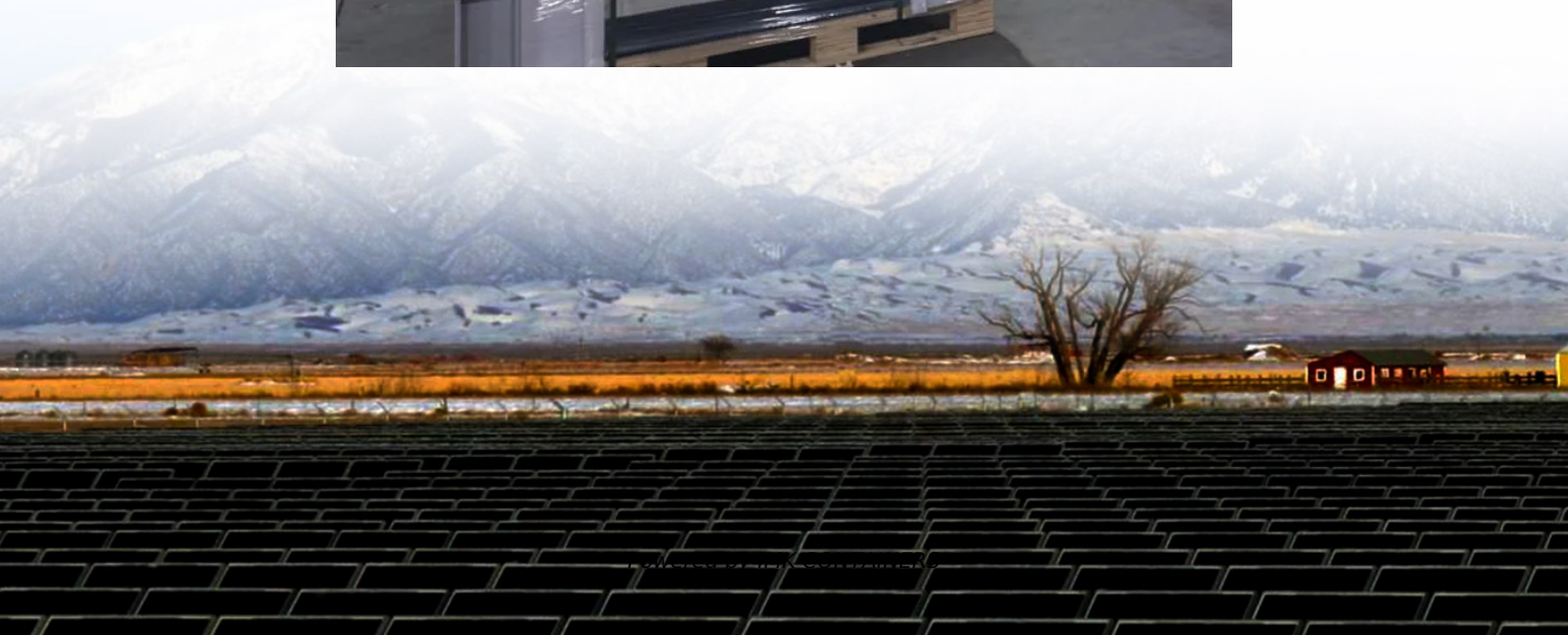


Is there an electrical system on top of the wind turbine





Overview

What are the parts of a wind turbine?

The wind turbine itself consists of the main tower, its three blades, and the nacelle. Inside the nacelle and the tower base are housed the various electrical and electronic parts necessary for the efficient and safe conversion of wind power to electrical energy. These include the power controls (pitch and yaw), the generator, and the.

How do wind turbines work?

Wind energy is renewable, not relying on fuel, and clean – not releasing harmful emissions as it generates electricity. But how exactly do wind turbines work?

The modern wind turbine is a complex machine, housing several thousand parts – from the massive steel tower to the wind vane and anemometer that sit on top.

What is a wind turbine electrical system?

To accomplish this, typical wind turbine s electrical system comprises a series of subsystems as shown in Figure 17. energy. However, since it has to face highly fluctuating torque load, supplied by the wind turbine rotor, it is significantly different from other generators used in electrical grids.

What are the components of a wind turbine electrical schematic?

The main components of a wind turbine electrical schematic include the generator, the control system, the power electronics, and the grid connection. The generator is responsible for converting the mechanical energy from the spinning blades into electrical energy.



Is there an electrical system on top of the wind turbine



[Understanding the Key Parts of a Wind Turbine](#)

But how exactly do wind turbines work? The modern wind turbine is a complex machine, housing several thousand parts - from the massive steel tower to the wind vane and ...

[Learn More](#)

[Wind Turbine Parts and Functions , Electrical Academia](#)

The article provides an overview of wind turbine components (parts), including the tower, rotor, nacelle, generator, and foundation. It highlights their functions, the role of control ...

[Learn More](#)



[The Parts of a Wind Turbine: Major Components Explained](#)

2. Nacelle The nacelle is the 'head' of the wind turbine, and it is mounted on top of the support tower. The rotor blade assembly is attached to the front of the nacelle. The nacelle ...

[Learn More](#)



[Main Components of Wind Turbine](#)

Main Components of Wind Turbine To exploit the kinetic energy of the wind, by converting it into electrical energy available to be fed into the network or to supply loads in parallel, a wind ...

[Learn More](#)



Understanding the Electrical Schematic of a Wind Turbine: ...

A wind turbine electrical schematic is a diagram that represents the electrical components and connections within a wind turbine system. It provides a visual representation of how different ...

[Learn More](#)



[Wind turbine: what it is, parts and working , Enel Group](#)

A transformer transfers the electricity from one circuit to another (in this case the electric grid), modifying its characteristics. Various control systems are located on the nacelle ...

[Learn More](#)



[Understanding the Electrical Schematic of a Wind Turbine: A](#)

A wind turbine electrical schematic is a diagram that represents the electrical components and connections within a wind turbine system. It provides a visual representation of how different ...

[Learn More](#)





[Wind Turbine Parts and Functions , Electrical ...](#)

The article provides an overview of wind turbine components (parts), including the tower, rotor, nacelle, generator, and foundation. It highlights their functions, the role of control systems, and the importance ...

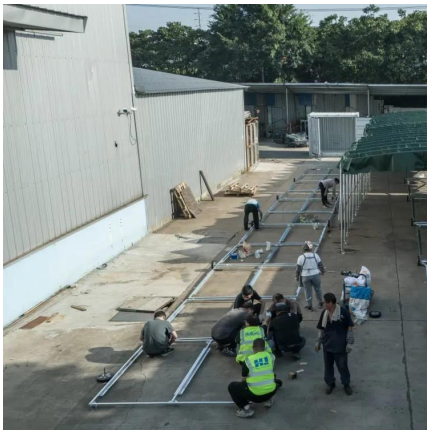
[Learn More](#)



Microsoft PowerPoint

Wind Turbine Generator Introduction A small anemometer and wind vane on top of the wind turbine electronically tell a controller which way to point the rotor into the wind. Then ...

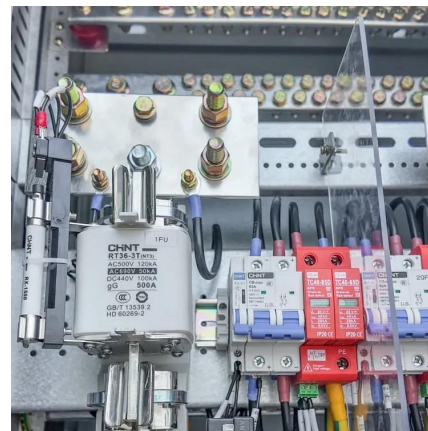
[Learn More](#)



[Wind turbine: How it works, parts, and existing types](#)

A wind turbine consists of various parts: Rotor: harvests the wind's energy usually with 3 blades connected to a shaft. When the wind blows, the rotor rotates, harnessing the ...

[Learn More](#)



[\(PDF\) Electrical Parts of Wind Turbines](#)

PDF , This section presents the electrical subsystem of a wind turbine. Specifically, the power control, the generator, the power electronics, the grid , Find, read and cite all the ...

[Learn More](#)





[\(PDF\) Electrical Parts of Wind Turbines](#)

PDF , This section presents the electrical subsystem of a wind turbine. Specifically, the power control, the generator, the power electronics, the grid , Find, read and cite all the research

[Learn More](#)



Electrical system

Wind turbine control and electrical systems are constantly evolving to provide improved characteristics and fault response for the purpose of grid integration. Nevertheless, ...

[Learn More](#)



[The Parts of a Wind Turbine: Major Components Explained](#)

But how exactly do wind turbines work? The modern wind turbine is a complex machine, housing several thousand parts - from the massive steel tower to the wind vane and ...

[Learn More](#)



Contact Us

For catalog requests, pricing, or partnerships, please visit:
<https://fundacjawandea-imk.pl>



Scan QR Code for More Information



<https://fundacjawandea-imk.pl>