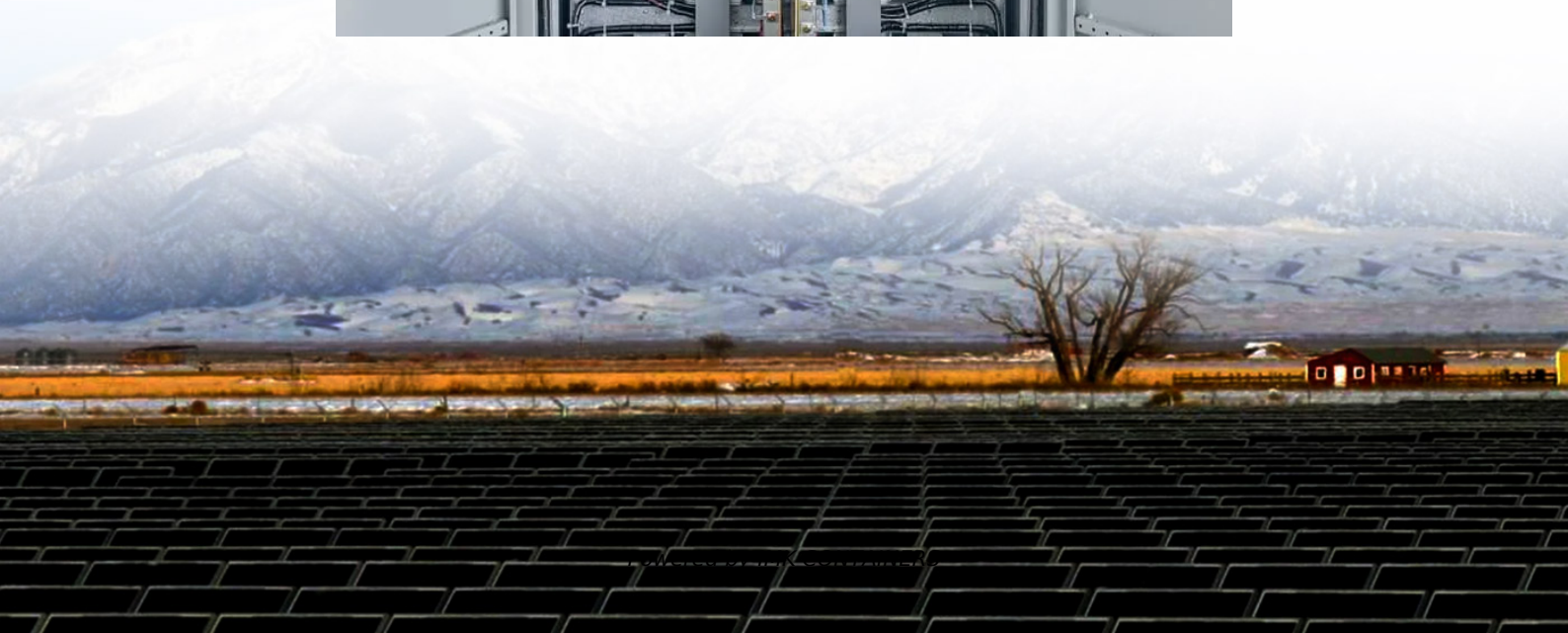


Inverter wide voltage input





Overview

What is the output voltage of a PV inverter?

Table 6 Laboratory prototype Components. The proposed circuit has an PV input voltage of 40 V and its output terminals are coupled to a load of 60 Ω . The measured voltage is displayed in Fig. 27, The inverter's output voltage approximately equals 50 VRMS and The mean input current is 1.3 A.

What voltage does an Inverter Supply?

The intermediate capacitor voltage is regulated at a constant average value of 100 V as shown in Fig. 24 this enables the inverter stage to output a suitable AC voltage. Lastly, the inverter output waveforms are illustrated in Fig. 25. 60 Ω is the load the inverter supplies.

What is a high voltage dc-ac sine wave inverter?

High voltage DC-AC sine wave inverters accept wide input ranges of 450V to 800Vdc. High frequency PWM technology enables high efficiency, compact construction and low weight. ABSOPULSE has recently added the CSH 500-F6 to its line of high input voltage DC-AC sine wave inverters.

How many volts can a buck boost inverter handle?

The Buck-Boost inverter input ranges from 35 V to 117 V. This estimation agrees with the range of operation proposed in 30 (40–100 V). However, the proposed topology can accommodate higher input voltage (up to 270 V), thus it has a wider range of operation and more versatile.



Inverter wide voltage input



Improved Transformerless PV Inverter for Wide Input-Voltage ...

The output voltage of the MVCU is the differential voltage between the absolute value of the output voltage of the inverter and the voltage of the PV array under SC, so it ...

[Learn More](#)



High voltage DC-AC sine wave inverters accept wide input ...

High voltage DC-AC sine wave inverters accept wide input ranges of 450V to 800Vdc. High frequency PWM technology enables high efficiency, compact construction and low weight.

A Wide Input Voltage Range Switched-Capacitor Multilevel Inverter ...

This article presents a wide input voltage range switched-capacitor multilevel inverter based on an adjustable number of output levels. Through different modulation ...

[Learn More](#)



High voltage DC-AC sine wave inverters ...

High voltage DC-AC sine wave inverters accept wide input ranges of 450V to 800Vdc. High frequency PWM technology enables high efficiency, compact construction and low weight.

[Learn More](#)



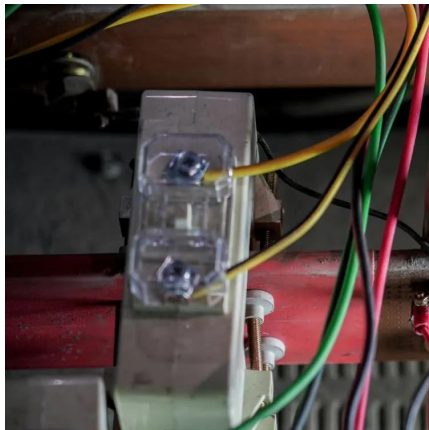
[Learn More](#)



A novel wide input range transformerless PV microinverter ...

a) A novel microinverter topology that supports a wide range of input voltage with no floating interval for intermediate capacitance to ensure power decoupling is proposed. b)

[Learn More](#)



[Three-Phase Buck-Boost Y-Inverter with Wide DC Input ...](#)

Therefore, a straightforward and simple operation is possible. In addition, the Y-inverter allows for continuous output AC voltage waveforms, eliminating the need of additional ...

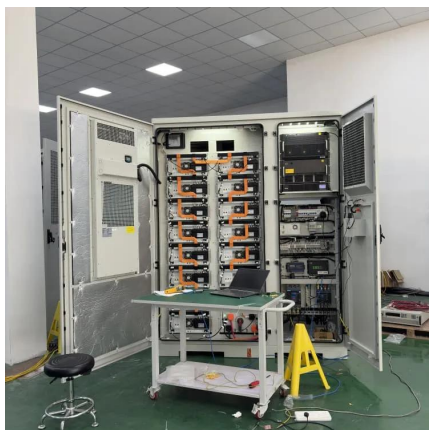
[Learn More](#)



[Wide Voltage Input High-Performance Solar Inverter ...](#)

The wide voltage input range of the inverter ensures seamless integration of these panels, enabling efficient conversion of solar energy into usable electricity for household appliances, ...

[Learn More](#)



[A Wide Input Five-Level Inverter With Hybrid...](#)



Nonisolated inverters have the advantages of high power density, high efficiency, and low cost. However, the traditional nonisolated full-bridge inverter has an output AC voltage amplification lower than the ...

[Learn More](#)



[A Wide Input Voltage Range Switched-Capacitor ...](#)

Abstract--This paper presents a wide input voltage range switched-capacitor multilevel inverter (SCMLI) based on an adjustable number of output levels. Through different ...

[Learn More](#)



Maximize Efficiency: Benefits of Wide Input Voltage



[Robust off-Grid PV Inverter with Wide DC Voltage Input](#)

Robust off-Grid PV Inverter with Wide DC Voltage Input - Ideal for Remote Locations, Islands, and Mountainous Areas, Find Details and Price about off-Grid Inverter Photovoltaic ...

[Learn More](#)



[A Wide Input Five-Level Inverter With Hybrid PWM-SPWM ...](#)

Nonisolated inverters have the advantages of high power density, high efficiency, and low cost. However, the traditional nonisolated full-bridge inverter has an output AC voltage ...

[Learn More](#)



Inverters

Understanding Wide Input Voltage Inverters Wide input voltage inverters are electronic devices that convert direct current (DC) from renewable energy sources, such as ...

[Learn More](#)



Contact Us

For catalog requests, pricing, or partnerships, please visit:
<https://fundacjawandea-imk.pl>

Scan QR Code for More Information



<https://fundacjawandea-imk.pl>