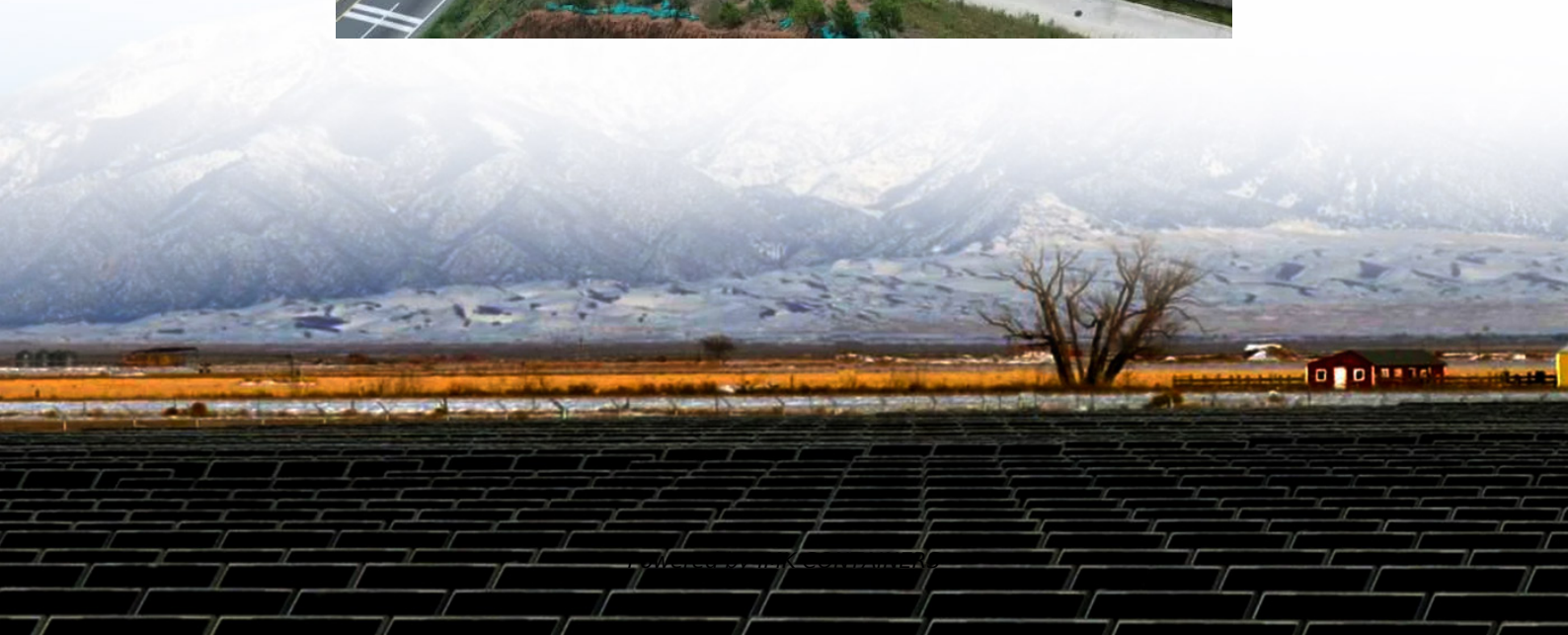


Inverter voltage 380V





Overview

What is the rated current of a 3 phase inverter?

Rated current 21A at 380V~ 480V, 3.8A at 220V~240V. 3 phase inverter with sensorless vector control can work at (-10°C, 40°C). Come with RS485 communication mode, vfd inverter 3 phase has IP20 enclosure rating. 1.5kw variable frequency inverter for sale, vfd inverter 3 phase 230V, 400V, 480V, rated current 3.8A at 380V ~ 480V, 5.1A at 220V ~ 240V.

How much torque does a 3 phase inverter have?

Start torque reaches 150% of rating torque at 1Hz. 3 phase inverter with output voltage 3 phase AC 0~input voltage can work at (-10°C, 40°C). Reliable 160 kW variable frequency inverter, 3 phase inverter input voltage 240V /420V /480V AC $\pm 15\%$ can be optional.

What is a 90 kW 3 phase inverter?

90 kW 3 phase inverter 230V, 400V, 460V, IP 20 enclosure rating, V/F control mode, 5%-95%, without condensation. The 3 phase variable frequency inverter with input frequency 50Hz / 60Hz has good performance, such as overcurrent protection, overvoltage protection, and undervoltage protection.

Where are 220V to 380V converter suppliers?

There are 20,208 220v to 380v converter suppliers, mainly located in Asia. The top supplying countries or regions are China, Taiwan, China, and Vietnam, which supply 99%, 1%, and 1% of 220v to 380v converter respectively. □20v to 380v converter products are most popular in Southeast Asia, North America, and Eastern Europe.



Inverter voltage 380V



[380V output solar inverter converter](#)

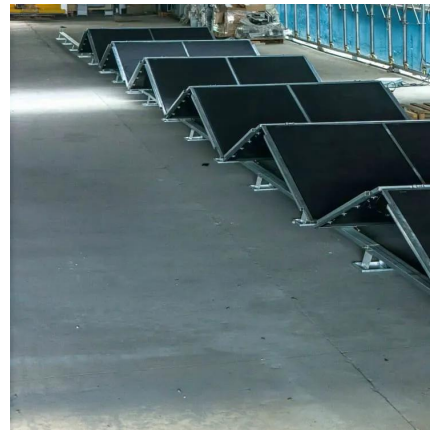
380V output solar inverter converter Product Specification: Brand Name : TANFON SOLAR Model Number : solar inverter 30kw DC voltage : 48V/96V/192V Output voltage : ...

[Learn More](#)

[SY380 Series Boost Voltage Inverter EN 202112 v1.0.cdr](#)

SY380 Series Voltage Boost Inverter Overview Sy380 series inverter is a special inverter designed for the civil power grid (single-phase 220VAC) driven 380VAC motor. No ...

[Learn More](#)



380V Three Phase 5.5kw 50Hz 60Hz Variable Frequency Inverter ...

Frequency inverters' power covers the range from 0.4 to 630kW, and voltage range is between 220V and 480V. More than inverters are running smoothly 300, 000 units at different ...

[Learn More](#)



[380V 3-Phase VFD Inverter: Selection & Basic Setup](#)

A 380V 3-phase VFD inverter helps deliver smooth starting, stable processes, and energy savings when demand drops. What Is a VFD and Why Does It Matter? A VFD (Variable Frequency ...



[Learn More](#)



[55 kW Frequency Inverter, 3 Phase 240V, 380V, 480V](#)

55 kW (75 hp) 3 phase inverter, rated current 110A at 380V ~ 480V, 210A at 220V ~ 240V, 3 phase AC 0~input voltage. Sturdy case, easy to operate and take. It is widely used in ...

[Learn More](#)



The difference between three-phase 220v and three-phase 380v inverter

In practical applications, the input voltage of the inverter usually has two specifications: three-phase 220V and three-phase 380V. This article will analyze the differences between these two ...

[Learn More](#)



[SANDI SDT-40KW phase converter 220VAC to 380V 3 phase ...](#)

Wide voltage input 80-320VAC, can also customize the special voltage according to the requirements, to adapt to the working environment of the regional grid voltage is low. ...

[Learn More](#)





[Is there an inverter that can invert 380v?](#)

The inverter can be used in finance, communications, transportation, electric power, government, centralized server rooms, network management centers, computer centers, industrial automation equipment, ...

[Learn More](#)



[220v to 380v converter](#)

Discover 220V to 380V converters with CE certification and IP20 protection. Explore AC-to-AC voltage converters for industrial automation, pumps, and motor control.

[Learn More](#)



[380V 3-Phase VFD Inverter: Selection & Basic ...](#)

A 380V 3-phase VFD inverter helps deliver smooth starting, stable processes, and energy savings when demand drops. What Is a VFD and Why Does It Matter? A VFD (Variable Frequency Drive) controls an ...

[Learn More](#)



Three Phase Inverter

5.5 kW variable frequency drive inverter, input voltage 3 phase 208V /380V /480V AC $\pm 15\%$ can be optional, and output voltage 3 phase AC 0~input. With V/F and sensorless vector control, 3 ...

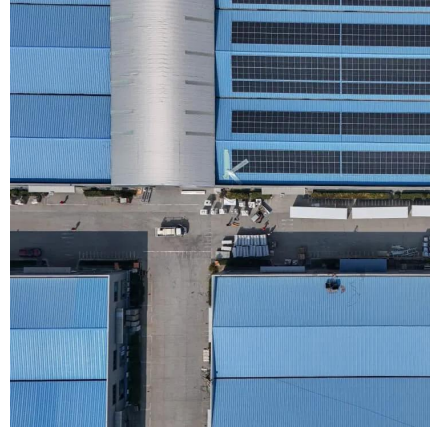
[Learn More](#)



[380V output solar inverter converter](#)

380V output solar inverter converter Product Specification: Brand Name : TANFON SOLAR
Model Number : solar inverter 30kw DC voltage : 48V/96V/192V Output voltage : 110V/220V/380V/415V ...

[Learn More](#)



[SANDI SDT-40KW phase converter 220VAC to...](#)

Wide voltage input 80-320VAC, can also customize the special voltage according to the requirements, to adapt to the working ...

[Learn More](#)

[Is there an inverter that can invert 380v?](#)

The inverter can be used in finance, communications, transportation, electric power, government, centralized server rooms, network management centers, computer ...

[Learn More](#)



[55 kW Frequency Inverter, 3 Phase 240V, ...](#)

55 kW (75 hp) 3 phase inverter, rated current 110A at 380V ~ 480V, 210A at 220V ~ 240V, 3 phase AC 0~input voltage. Sturdy case, easy to operate and take. It is widely used in automobile manufacturing, new energy ...

[Learn More](#)



Contact Us

For catalog requests, pricing, or partnerships, please visit:
<https://fundacjawandea-imk.pl>

Scan QR Code for More Information



<https://fundacjawandea-imk.pl>