

# **Inverter solar Clamp**





## Overview

---

What is a CT clamp & a hybrid inverter?

CT clamps provide real-time data on the electrical current passing through the wire they encircle, which is essential for energy management systems in residential solar setups. A hybrid inverter is a versatile component that can convert DC electricity from solar panels or batteries into AC electricity for household use.

How many CT clamps does a single phase inverter have?

Single phase inverters will come with one CT clamp and three phase inverters will come with three CT clamps. These will be used to measure the GRID imports and Exports of your system. Different sized inverters will have a different CT clamp rating supplied but they will look something like this:.

Why do you need a CT clamp for an inverter?

This helps in reducing electricity bills and optimising the use of renewable energy. Accuracy: CT clamps provide precise current measurements, allowing the inverter to make accurate decisions about energy distribution. Non-Intrusive: They can be installed without interrupting the power supply, making them ideal for residential setups.

Do I need a CT clamp for a string inverter?

When the inverter is set up as a string inverter and no export limitation is in place using a CT clamp is optional. With no CT you can set the inverter to 'Selling-First' this will use the PV to cover the property load and then export any excess to the grid. Without a CT you will only see the generated PV values recorded.



## Inverter solar Clamp



### [Understanding the Magic Behind Your Hybrid ...](#)

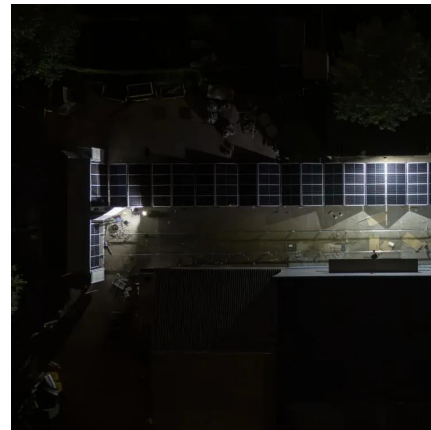
By accurately monitoring current flow and providing real-time data, CT clamps enable your inverter to smartly switch between solar panels, batteries, and the grid, ensuring a seamless and efficient energy supply ...

[Learn More](#)

### [Solar PV Wire, Inverter Cable, Gator Clamps & Fuse Kits](#)

Boost the safety and efficiency of your solar array with the solar PV wire, cable, alligator clamps and fuse kits from AIMS Power.

[Learn More](#)



### [Micro Inverter Mounting Clamp Solar Mount Solar Panel ...](#)

2 x PV Clamp Aluminium Holder Attachment for Hoymiles Micro Inverter Module Frame Balcony Power Plant Solar Inverter Performance Optimiser Material Aluminium Color Slivery Standard ...

[Learn More](#)



## CT Clamps?

Hi, Can anyone simply explain to me the purpose of CT clamps in some inverters. Some people say they are essential but most inverters don't have them. What is the difference ...



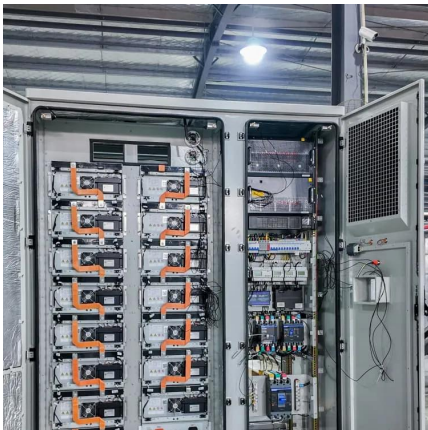
[Learn More](#)



### [Seaward 396A961 Power Clamp Solar](#)

The Solar Power Clamp is a feature-packed Power Analyzer designed to enable maintenance, troubleshooting and efficiency measurements on photovoltaic systems. The Power Clamp ...

[Learn More](#)



### [Solar Power Clamp \(396A961\)](#)

Description Designed for solar installers and technicians, the Solar Power Clamp by Seaward allows quick and accurate measurement of AC and DC power in photovoltaic (PV) systems. ...

[Learn More](#)



### [Solar Power Clamp , Seaward](#)

Solar Power Clamp Power analysis tool for PV installations The Solar Power Clamp is a feature-packed Power Analyzer designed to enable efficiency measurements, troubleshooting and ...

[Learn More](#)

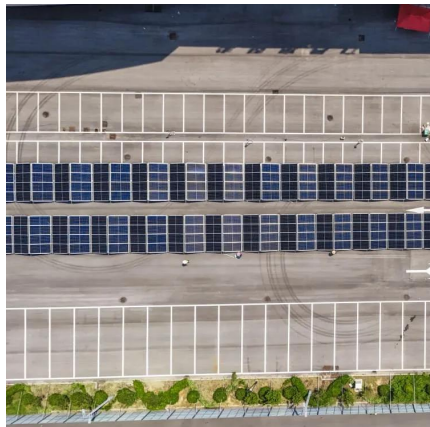
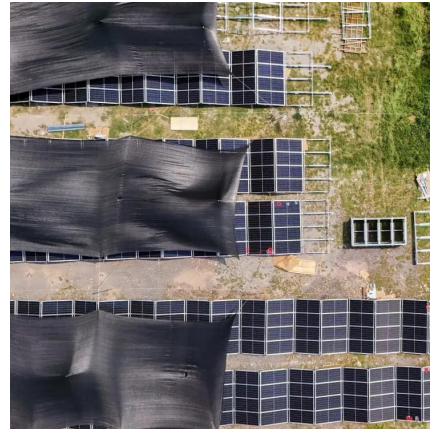




### [Solar Power Clamp \(396A961\)](#)

Description Designed for solar installers and technicians, the Solar Power Clamp by Seaward allows quick and accurate measurement of AC and DC power in photovoltaic (PV) systems. This essential tool assess system ...

[Learn More](#)



### **Solis CT Clamp**

Solis CT clamp for the Solis 4G, 5G, & S6 inverter ranges. 10 meter 100A Current Transformer for Solis single phase inverters. This CT is required for export limitation feature of the? inverters to work. This is not intended for ...

[Learn More](#)

### [Ref Design for Isolated Gate Driver With Active Miller ...](#)

Reference Design for Isolated Gate Driver With Active Miller Clamp for Solar Inverters Description This reference design consists of a single module with a reinforced, ...

[Learn More](#)



### **Solis CT Clamp**

Solis CT clamp for the Solis 4G, 5G, & S6 inverter ranges. 10 meter 100A Current Transformer for Solis single phase inverters. This CT is required for export limitation feature of the? inverters to ...

[Learn More](#)



## [Solar Power Clamp , Seaward](#)

Solar Power Clamp Power analysis tool for PV installations The Solar Power Clamp is a feature-packed Power Analyzer designed to enable efficiency ...

[Learn More](#)



## **Understanding the Magic Behind Your Hybrid Inverter: How CT Clamps ...**

By accurately monitoring current flow and providing real-time data, CT clamps enable your inverter to smartly switch between solar panels, batteries, and the grid, ensuring a ...

[Learn More](#)

## **CT Clamp Guide**

What is a CT Clamp? A Current Transformer (CT) Clamp is a sensor that allows the inverter to detect current passing through a cable and which direction this current is flowing. ...

[Learn More](#)



## **Contact Us**

---

For catalog requests, pricing, or partnerships, please visit:  
<https://fundacjawandea-imk.pl>



## Scan QR Code for More Information



<https://fundacjawandea-imk.pl>