

Inverter pure sine wave rear pole





Overview

What is a pure sine wave inverter?

Among the various types of inverters available in the market, pure sine wave inverters have emerged as a preferred choice for their ability to deliver high-quality, stable electrical output. Whether it's for powering sensitive electronic devices, solar energy systems, or grid tie applications, pure sine wave inverters offer numerous advantages.

How does a sine wave inverter work?

Electricity that comes from the power grid is in the form of a sine wave—a smooth, repeating wave that maintains a consistent frequency (usually 50 or 60 Hz). A pure sine wave inverter produces a waveform that closely mimics utility-grade electricity, making it ideal for running sensitive or high-performance equipment.

What are the technology trends in pure sine wave inverters?

Technology Trends: Pure Sine Wave Inverters are moving toward intelligence (APP remote monitoring) and miniaturization (30%-50% smaller volume under same power) for portability. Market Growth: The global market is expected to grow at an 8.5% CAGR from 2024 to 2030, driven by new energy policies and demand for high-quality power.

What is a pure sine wave inverter based backup system?

Inverter-based backup systems in homes must support a wide range of appliances, including refrigerators, HVAC systems, LED lighting, and security systems. Pure sine wave inverters ensure compatibility with appliances that incorporate AC motors, digital timers, or inverter-based controls.



Inverter pure sine wave rear pole



[What Is a Pure Sine Wave Inverter and How ...](#)

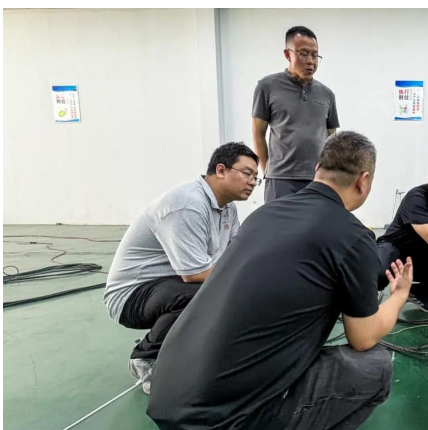
A pure sine wave inverter is a specialty device that transforms direct current (DC) electricity from sources like batteries or solar panels into alternating current (AC) electricity, generating a smooth and stable power ...

[Learn More](#)

[Pure Sinewave Inverter with Transfer Switch](#)

Advanced SPWM modulation technology with pure sine wave output and high power quality. High power density and long life devices are selected to support long term operation at ...

[Learn More](#)



[? What is a Pure Sine Wave Inverter and Why ...](#)

Electricity that comes from the power grid is in the form of a sine wave--a smooth, repeating wave that maintains a consistent frequency (usually 50 or 60 Hz). A pure sine wave inverter produces a waveform ...

[Learn More](#)

[Pure Sine Wave Inverter Key Features and ...](#)

As energy demand diversifies, Pure Sine Wave Inverters will play a more critical role in household, outdoor, and industrial energy systems, becoming a key link in the global energy conversion chain.



[Learn More](#)



[Pure Sine Wave Inverter: Everything You Need to Know](#)

What is a pure sine wave inverter A pure sine wave inverter is a type of inverter that converts DC power to the same smooth sinusoidal AC power as the National Grid. Inverters ...

[Learn More](#)



[What Is a Pure Sine Wave Inverter and How Does It Work?](#)

A pure sine wave inverter is a specialty device that transforms direct current (DC) electricity from sources like batteries or solar panels into alternating current (AC) electricity, ...

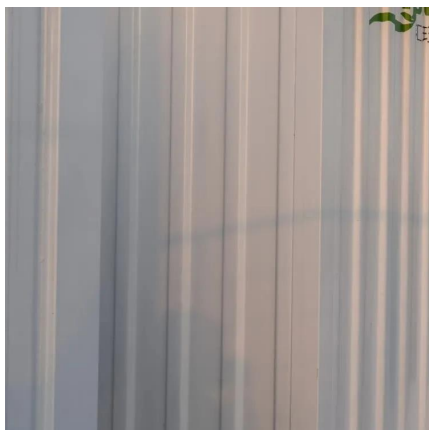
[Learn More](#)



[What is Pure Sine Wave Inverters and How does it work](#)

Why choose a 5000-watt pure sine wave power inverter? Supplier MINGCH explains its applications and key features. Click now!

[Learn More](#)

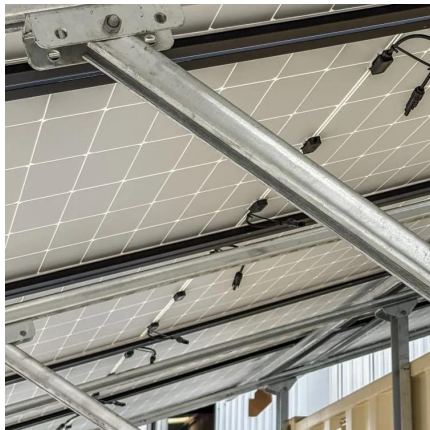




[How to Choose a Pure Sine Wave Inverter: A Comprehensive ...](#)

Pure sine wave inverters have become the gold standard for off-grid energy systems, RV setups, emergency backup power, and solar installations--thanks to their broad ...

[Learn More](#)



[Pure Sinewave Inverter with Transfer Switch](#)

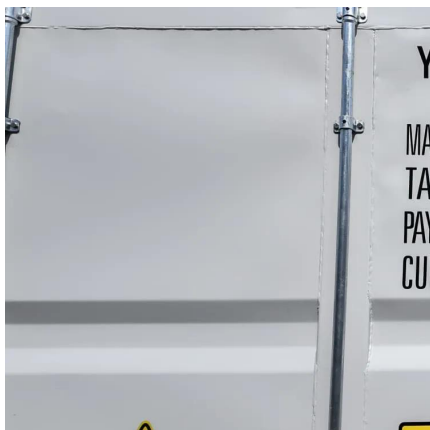
Advanced SPWM modulation technology with pure sine wave output and high power quality. High power density and long life devices are selected to support long term operation at full power

[Learn More](#)

[Pure Sine Wave Inverter Key Features and Practical...](#)

As energy demand diversifies, Pure Sine Wave Inverters will play a more critical role in household, outdoor, and industrial energy systems, becoming a key link in the global ...

[Learn More](#)



[What is Pure Sine Wave Inverters and How ...](#)

Why choose a 5000-watt pure sine wave power inverter? Supplier MINGCH explains its applications and key features. Click now!

[Learn More](#)



[What is a Pure Sine Wave Inverter?](#)

A pure sine wave inverter is a common type of inverter that consists of an inverter bridge, control logic and filter circuit. Pure sine wave inverters are widely used in industrial electronics and ...

[Learn More](#)



[? What is a Pure Sine Wave Inverter and Why Does it Matter?](#)

Electricity that comes from the power grid is in the form of a sine wave--a smooth, repeating wave that maintains a consistent frequency (usually 50 or 60 Hz). A pure sine wave ...

[Learn More](#)



[Pure Sine Wave Inverter A-Z . Theory . Types . Working](#)

A pure sine wave inverter is an electronic device that converts direct current (DC) electricity, typically from a battery or a solar panel, into alternating current (AC) electricity with a ...

[Learn More](#)



[Pure Sine Wave Inverter A-Z . Theory . Types . Working](#)

A pure sine wave inverter is a critical component in delivering stable and high-quality electrical power to sensitive electronic equipment. In this comprehensive guide, we'll delve into the fundamentals of pure sine ...

[Learn More](#)





[Pure Sine Wave Inverter: Clean Power Guide 2025](#)

A pure sine wave inverter is a critical component in delivering stable and high-quality electrical power to sensitive electronic equipment. In this comprehensive guide, we'll ...

[Learn More](#)



Contact Us

For catalog requests, pricing, or partnerships, please visit:
<https://fundacjawandea-imk.pl>

Scan QR Code for More Information



<https://fundacjawandea-imk.pl>