

Inverter directly connected to the battery





Overview

How do you connect an inverter to a battery?

Connect the positive cable first. Attach the red cable to the positive terminal on both the inverter and the battery. Attach the negative cable. Connect the black cable to the negative terminal, ensuring secure attachment to prevent loose connections. Always use insulated tools to avoid unintentional contact with live wires.

What are inverter battery connections?

Inverter battery connections form the backbone of reliable power systems, ensuring efficient operation and safety. By following best practices and understanding the nuances of these connections, you can enhance system performance and longevity.

Do inverters need to be connected to batteries?

Connecting inverters to batteries is an important part of an off-grid power solution or backup power system, and the right connections ensure that the system runs efficiently.

How do you use a car battery inverter?

Place the inverter on a stable surface 8. Connect the Positive battery clip to the battery positive terminal. 9. Connect the negative battery clip to a metal part of the vehicle frame. 10. Connect an appliance cord plug into the inverter or a USB power cord into the inverter. 11. Turn ON the inverter and use the appliance.



Inverter directly connected to the battery



[Can I Attach My Small Inverter Directly To The Battery?](#)

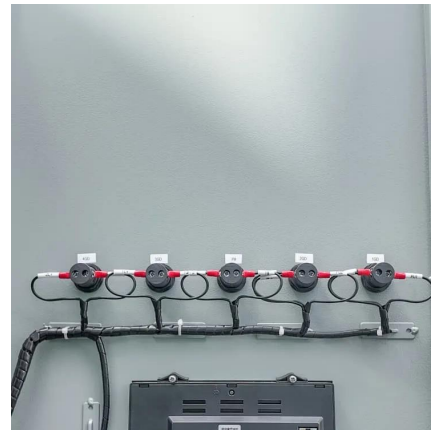
In summary, connect your inverter directly to the battery using appropriate gauge cables, ensure proper ventilation, use a fuse, and consider the type of battery and ...

[Learn More](#)

[How to Connect a Large or Small Inverter to a Battery](#)

by: Justin Gray This blog answers questions about which inverters can be powered by 12V DC accessory outlets (cigarette lighter sockets) and which require wiring ...

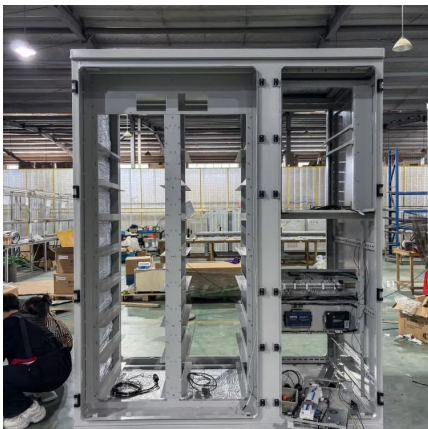
[Learn More](#)



[How to Safely Connect a Battery to an ...](#)

Learn how to safely connect your batteries to your inverter with our guide. Avoid common wiring mistakes to optimize performance and extend system life.

[Learn More](#)



[Can I Attach My Small Inverter Directly to the Battery?](#)

Yes, you can attach a small inverter directly to a battery, but doing it safely requires understanding voltage compatibility, wire sizing, and overload risks. Many DIYers assume it's ...



[Learn More](#)



[Can I Connect an Inverter Directly to a ...](#)

In today's increasingly connected world, having a reliable and efficient power source is essential. Battery paired with inverters provide a versatile solution for powering various devices and appliances. In this ...

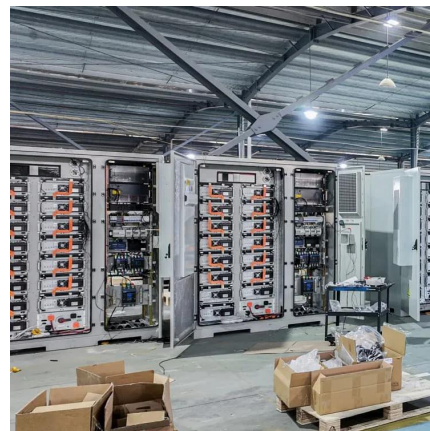
[Learn More](#)



[How to Wire Inverter to Battery - No Sparks, Just Power](#)

How to wire inverter to battery without frying your gear? Discover the safest, smartest method electricians recommend.

[Learn More](#)



[How to Connect a Large or Small Inverter to a ...](#)

by: Justin Gray This blog answers questions about which inverters can be powered by 12V DC accessory outlets (cigarette lighter sockets) and which require wiring directly to a battery. In addition to that, ...

[Learn More](#)





[Can I Connect an Inverter Directly to a Battery? - ECGSOLAX](#)

In today's increasingly connected world, having a reliable and efficient power source is essential. Battery paired with inverters provide a versatile solution for powering ...

[Learn More](#)



How to Safely Connect a Battery to an Inverter: A Step-by ...

Learn how to safely connect your batteries to your inverter with our guide. Avoid common wiring mistakes to optimize performance and extend system life.

[Learn More](#)

How to connect inverter to battery: a step-by-step guide for ...

Proper stability ensures the longevity and safety of your setup while learning how to connect inverter to battery. How to connect inverter to battery When setting up a power ...

[Learn More](#)



[How to connect inverter to battery: a step-by ...](#)

Proper stability ensures the longevity and safety of your setup while learning how to connect inverter to battery. How to connect inverter to battery When setting up a power system, understanding how to connect ...

[Learn More](#)



[Can I connect an inverter directly to a battery?](#)

Yes, you can connect an inverter directly to a battery bank. Once the batteries are connected correctly, simply route the positive and negative wires from the inverter to the ...

[Learn More](#)



[Inverter Battery Connection: Essential Tips For Safe And...](#)

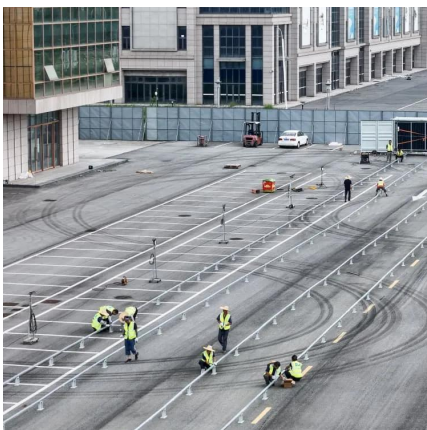
Learn essential tips for safe and efficient inverter battery connection. Discover step-by-step guides, wiring techniques, and troubleshooting tips to optimize your power backup system's ...

[Learn More](#)

[How to Wire Inverter to Battery - No Sparks,...](#)

How to wire inverter to battery without frying your gear? Discover the safest, smartest method electricians recommend.

[Learn More](#)



How to Connect an Inverter to a Battery: Step-by-Step Guide ...

Learn how to safely and efficiently connect an inverter to a battery with our step-by-step guide. Includes brand-specific tips for Solis, Deye, Megarevo, SRNE, and more. Perfect ...

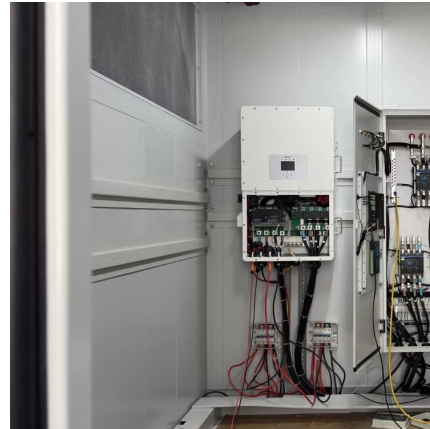
[Learn More](#)



[How to Connect an Inverter to a Battery: Step ...](#)

Learn how to safely and efficiently connect an inverter to a battery with our step-by-step guide. Includes brand-specific tips for Solis, Deye, Megarevo, SRNE, and more. Perfect for DIY enthusiasts and ...

[Learn More](#)



Contact Us

For catalog requests, pricing, or partnerships, please visit:
<https://fundacjawandea-imk.pl>

Scan QR Code for More Information



<https://fundacjawandea-imk.pl>