

Inverter 48v to 220v





Overview

What is a 48 watt inverter?

48V 2000W power inverter with universal socket and USB port, modified sine wave or pure sine wave output waveform are available. Option for 110V/120V or 220V/230V/240V AC 50Hz/60Hz, suitable DC to AC inverter for home use to charge TV, laptop, fans, lights and other appliances. Storage temperature of this 2000 watt inverter between -30 °C to +70 °C.

How does a 48V power inverter work?

In terms of functionality, a 48V power inverter typically consists of several key components. These include a DC input, an inverter circuit that converts DC to AC power, control electronics for regulating the output voltage and frequency, and output sockets or terminals to connect AC-powered devices.

What is the working temperature of a 48V 5000W inverter?

Working temperature of this 48V 5000W inverter between -10 °C to 50 °C. A 48V power inverter is a device used to convert direct current (DC) electrical power from a 48-volt battery or DC power source into alternating current (AC) power. In terms of functionality, a 48V power inverter typically consists of several key components.

How much power does a 5000W inverter use?

5000W 48V DC to 220V AC pure sine wave inverter. This inverter operates with a 48V DC voltage compatible with SOLISE lithium batteries. It transforms 48V DC (direct current) into 220V AC (alternating current). Peak power : 10000W <3sec. STANDARDS Certifications : RoHS I CE Warranty - 2 years



Inverter 48v to 220v



[48v dc to 230v 220v ac inverters 240v](#)

Xindun power factory sales inverter 48v to 220v, 48v to 240v, 48vdc to 230vac. AC inverters high frequency design, high power density, high efficiency, low no-load loss.

[Learn More](#)

[Inverter 48vdc to 220vac 3000w](#)

Types of 48v DC to 220v AC inverters 3000w Inverters are found in many commercial settings as they convert DCs to ACs. They can be relatively easily classified into the types below. Pure ...

[Learn More](#)



[Inverter 5000W 48V DC to 220V AC](#)

This inverter operates with a 48V DC voltage compatible with SOLISE lithium batteries. It transforms 48V DC (direct current) into 220V AC (alternating current).

[Learn More](#)

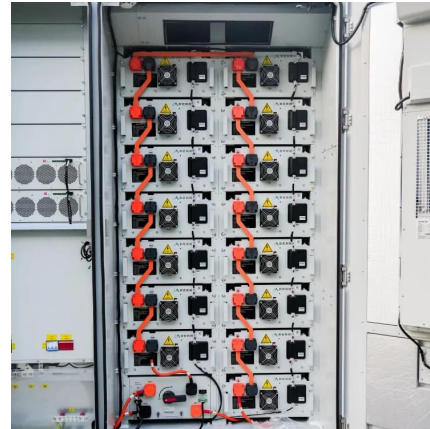


[800 Watt Modified Sine Wave Inverter, 48VDC to 220VAC](#)

The 800W modified sine wave inverter, converting 48VDC to 220VAC with an output power of 800W and a peak power of 1600W, this inverter efficiently converts DC power from a 48V ...



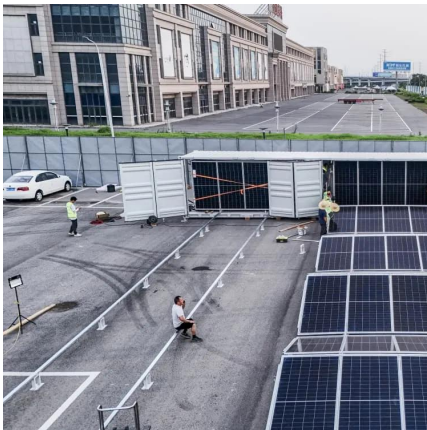
[Learn More](#)



[48v dc to 230v 220v ac inverters 240v](#)

Xindun power factory sales inverter 48v to 220v, 48v to 240v, 48vdc to 230vac. AC inverters high frequency design, high power density, high efficiency, low no-load loss.

[Learn More](#)



[800 Watt Modified Sine Wave Inverter,...](#)

The 800W modified sine wave inverter, converting 48VDC to 220VAC with an output power of 800W and a peak power of 1600W, this inverter efficiently converts DC power from a 48V battery (with an input voltage range of 38V ...

[Learn More](#)



[Amazon : 48v To 220v Inverter](#)

PowMr 10200W Solar Inverter 48V DC to 220V/230V AC Pure Sine Wave Power Inverter Built-in 160A MPPT Controller 10000W Hybrid Inverter for Home RV Off-Grid System, for 48V Lead ...

[Learn More](#)



48v Inverter, 48v DC to 120v/220v AC Power Inverter ,



inverter...

48V 2000W power inverter with universal socket and USB port, modified sine wave or pure sine wave output waveform are available. Option for 110V/120V or 220V/230V/240V AC ...

[Learn More](#)



Inverter 48v 220v

The Inverter 48v 220v is a top choice in our Solar Inverter collection. Bulk purchases of solar inverters offer cost savings, competitive pricing, and customization options. Buying in bulk can ...

[Learn More](#)



[Inverter 5000W 48V DC to 220V AC](#)



[Anern 6200W Hybrid Solar Inverter 48V DC to ...](#)

Amazon : Anern 6200W Hybrid Solar Inverter 48V DC to 220-230VAC, Pure Sine Wave Solar Inverter with 120A MPPT Solar Charge Controller, Fit for 48V Lithium Lead-Acid Gel Battery Off-Grid System : ...

[Learn More](#)



[Anern 6200W Hybrid Solar Inverter 48V DC to 220-230VAC,...](#)

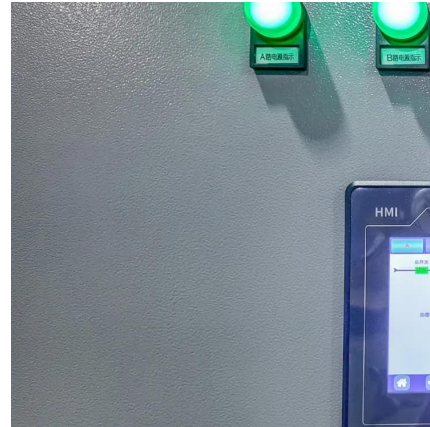
Amazon : Anern 6200W Hybrid Solar Inverter 48V DC to 220-230VAC, Pure Sine Wave Solar Inverter with 120A MPPT Solar Charge Controller, Fit for 48V Lithium Lead ...

[Learn More](#)



This inverter operates with a 48V DC voltage compatible with SOLISE lithium batteries. It transforms 48V DC (direct current) into 220V AC (alternating current).

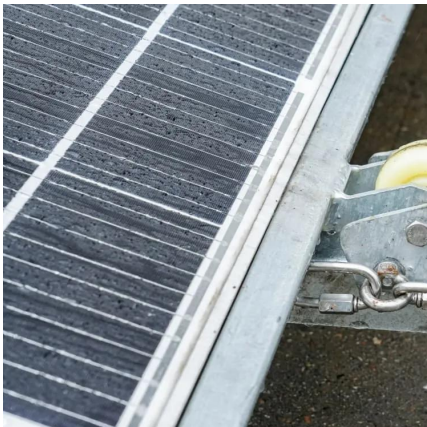
[Learn More](#)



[10.2KW 220Vac 48Vdc All In One Inverter Charger](#)

10.2KW pure sine wave inverter with up to 95% efficiency seamlessly converts 48V DC to 220V AC power and vice versa. Compatible with the grid, solar panels, and generators, it offers ...

[Learn More](#)



[48v Inverter, 48v DC to 120v/220v AC Power ...](#)

48V 2000W power inverter with universal socket and USB port, modified sine wave or pure sine wave output waveform are available. Option for 110V/120V or 220V/230V/240V AC 50Hz/60Hz, suitable DC to AC inverter for home ...

[Learn More](#)



Inverter 48V 220V

Shop top-rated inverter 48v 220v on AliExpress! High power 48v to 220v inverter, reliable inverter for home/vehicle use. Get efficient inverter 48v 220v with competitive prices and fast shipping!

[Learn More](#)





Contact Us

For catalog requests, pricing, or partnerships, please visit:
<https://fundacjawandea-imk.pl>

Scan QR Code for More Information



<https://fundacjawandea-imk.pl>