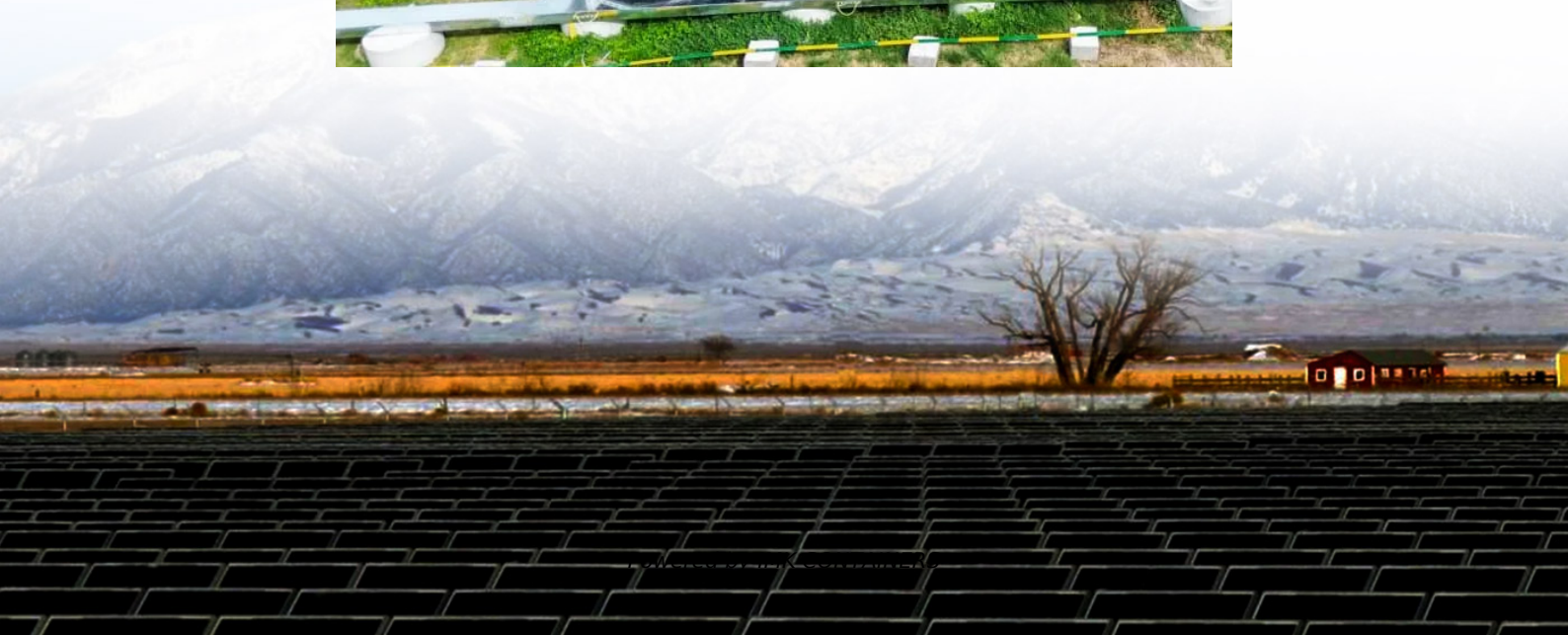


# **Install solar glass on the sloped roof**





## Overview

---

How should photovoltaic panels be installed?

Proper installation of photovoltaic panels is crucial for ensuring the system operates efficiently for many years. To verify the correctness of the installation, several key aspects should be examined. Firstly, panels should be installed in a location with optimal sun exposure, ideally facing south.

Which direction should solar panels be installed?

An interesting alternative is splitting the panels between east and west directions. This arrangement better matches energy production to daily demand, which often peaks in the morning and afternoon/evening. Installing panels facing north, however, is not recommended, as it significantly reduces energy output, making the system inefficient.

Which direction should solar panels be installed in Poland?

In Poland, the optimal solution is to orient the panels southward, maximizing sunlight capture throughout the day. If this is not feasible, for instance, due to shading, installing panels facing east or west can still be cost-effective, though with a slight efficiency reduction of 10–20%.

How do you install a roof on a flat roof?

Installation on a flat roof requires support structures, which can be fastened with pins, screws, or ballasts. Each method has its advantages but also demands proper safeguards, especially against strong winds. Self-supporting systems, allowing for quick installation without additional fasteners, reduce the risk of roof damage.



## Install solar glass on the sloped roof

---



[How to install solar energy on a sloping house .  
NenPower](#)

HOW DO I MAINTAIN SOLAR PANELS ON A SLOPING ROOF? Maintaining solar panels on a sloping roof requires periodic inspections and cleaning. Unlike flat roofs, where ...

[Learn More](#)

### How to Install Solar Panels on a Sloped Roof: Step-by-Step ...

Learn how to effectively install solar panels on a sloped roof with our detailed guide. Discover the benefits, step-by-step installation process, safety tips, and maintenance advice to maximize ...

[Learn More](#)



[Solar System Installation For Sloped Roofs](#)

Understanding The Basics of Solar Panel Placement The position and angle of solar panels are crucial for maximizing energy absorption. For sloped roofs, this is easier because they often ...

[Learn More](#)



### Complete Guide: How to Install a Solar Panel on a Sloped Roof

Looking to install solar panels on a sloped roof? Discover this step-by-step guide on how to install solar panels, key considerations, and tips for a successful installation.





[Learn More](#)



### [Mastering Photovoltaic Panel Installation on Sloped ...](#)

Ever wondered why most photovoltaic panel installations look like they're trying to sunbathe at 30 degrees? Sloped surfaces aren't just nature's slide parks - they're prime real estate for solar ...

[Learn More](#)



### [How to install solar energy on a sloping ...](#)

HOW DO I MAINTAIN SOLAR PANELS ON A SLOPING ROOF? Maintaining solar panels on a sloping roof requires periodic inspections and cleaning. Unlike flat roofs, where debris can accumulate ...

[Learn More](#)



### [Can solar panels be installed on a sloped roof?](#)

Next, they'll install the mounting brackets. These brackets are attached to the roof structure to provide a stable base for the solar panels. The type of mounting brackets used will ...

[Learn More](#)





## Installation of PV panels on the ground, roof, balcony or ...

The choice of location is a critical factor during the installation of photovoltaic panels. Roofs--flat or sloped--are the most common installation sites, offering excellent sun exposure and energy ...

[Learn More](#)



## [Step-by-Step Solar Roof Mounting Guide 2025, Types & Tips](#)

Complete guide to mounting solar panels on any roof type. Learn about tile, metal & flat roof installations, safety standards and certified mounting systems for DIY or professional ...

[Learn More](#)



## [Step-by-Step Solar Roof Mounting Guide ...](#)

Complete guide to mounting solar panels on any roof type. Learn about tile, metal & flat roof installations, safety standards and certified mounting systems for DIY or professional setups. Maximize your energy ...

[Learn More](#)



## [How to install solar energy on a sloping roof ...](#)

To install solar energy systems on a sloping roof building, one must consider several key factors to achieve optimal efficiency and performance. 1. Understand the roof pitch, 2. Select appropriate solar ...

[Learn More](#)



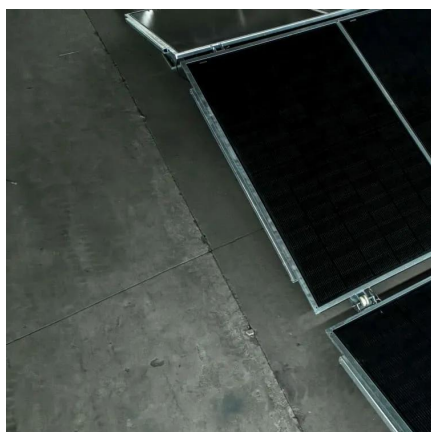


### [How to install solar energy on a sloping roof building](#)

To install solar energy systems on a sloping roof building, one must consider several key factors to achieve optimal efficiency and performance.

1. Understand the roof ...

[Learn More](#)



### [Can roof insulated glass be installed on a sloped roof?](#)

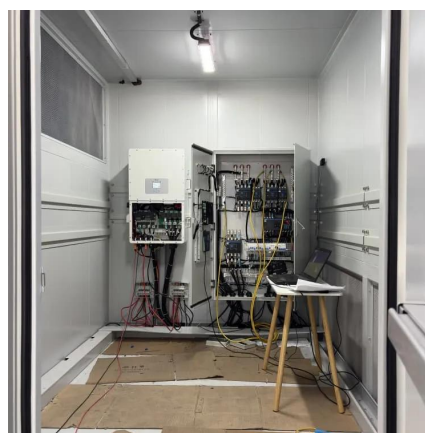
As a supplier of roof insulated glass, I often encounter inquiries about the feasibility of installing this type of glass on sloped roofs. This blog post aims to delve into the technical, ...

[Learn More](#)

### [Installation of PV panels on the ground, roof, ...](#)

The choice of location is a critical factor during the installation of photovoltaic panels. Roofs--flat or sloped--are the most common installation sites, offering excellent sun exposure and energy production optimization. ...

[Learn More](#)



## Contact Us

---

For catalog requests, pricing, or partnerships, please visit:  
<https://fundacjawandea-imk.pl>



## Scan QR Code for More Information



<https://fundacja-wandea-imk.pl>