

Huawei s site energy concept





Overview

What is Huawei site power facility?

Huawei Site Power Facility offers energy-efficient, low-carbon power supply solutions, enabling carriers to build environmentally sustainable, resilient networks for modern telecommunications infrastructure.

What are Huawei central office power solutions?

Huawei central office (CO) power solutions are used in new or reconstructed access/aggregation/core equipment rooms. The unique CO-eMIMO facilitates capacity expansion with low cost and little construction workload. PV systems can be deployed to further reduce the levelized cost of energy (LCOE).

What is a Huawei outdoor power system?

The ultra-lean structure enables 1 blade per site while keeping reliability, helping cut TCO and carbon emissions. Huawei outdoor power solutions are designed for carrier ICT sites. The all-in-one system supports multiple input (grid/PV/genset) and output (12/24/48/57 V DC, 24/36/220 V AC) modes.

How does Huawei use AI based technology?

Huawei adopts AI-based technologies to realize intelligent scheduling of energy sources such as the grid, genset, and solar power, providing reliable power supply in areas with no or unstable grid power, maximizing energy efficiency, and promoting green and sustainable development.



Huawei s site energy concept



[Huawei's New Single SitePower Solution Creates Four ...](#)

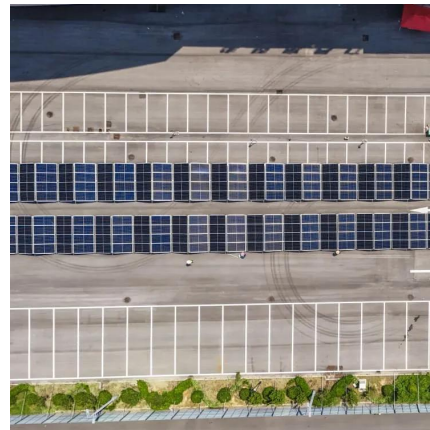
Solar-Battery Synergy: Based on Huawei's iSolar green site solution, solar systems and lithium batteries can be deployed at sites to ensure diverse energy supplies, ...

[Learn More](#)

[Huawei's next-gen Single SitePower solution to drive ...](#)

Huawei recently showcased its next-generation digital and intelligent site power facility solution, Single SitePower, at the 9th Global ICT Energy Efficiency Summit in Dubai. ...

[Learn More](#)



Huawei Single SitePower Solution Creates Four Synergies to ...

During the 9th Global ICT Energy Efficiency Summit in Dubai, Huawei showcased its next-generation digital and intelligent site power facility solution Single SitePower.

[Learn More](#)

[Huawei's next-gen Single SitePower solution ...](#)

Huawei recently showcased its next-generation digital and intelligent site power facility solution, Single SitePower, at the 9th Global ICT Energy Efficiency Summit in Dubai. This solution is set to drive the ...



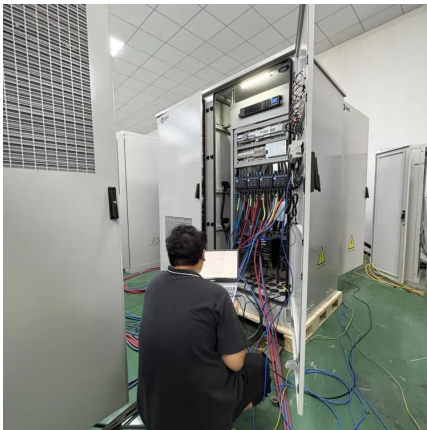
[Learn More](#)



'One-fits-all' approach to energy management and EV charging from Huawei

Huawei has launched the 'one-fits-all' energy solution for C& I applications and FusionCharge to build EV charging infrastructures.

[Learn More](#)



[Huawei Single SitePower Solution Creates ...](#)

During the 9th Global ICT Energy Efficiency Summit in Dubai, Huawei showcased its next-generation digital and intelligent site power facility solution Single SitePower.

[Learn More](#)



[Huawei Reveals a Next-Generation Site Power ...](#)

"The rise of network architectures centered on data centers in the intelligent era is driving higher demands for digital and intelligent energy." According to He Bo, Huawei Digital Power is making

[Learn More](#)



[Huawei unveils site power facility architecture ...](#)



According to He Bo, Huawei Digital Power is making continuous innovations in architectures and solutions to help operators thrive as energy prosumers. Single SitePower: Next-generation intelligent ...

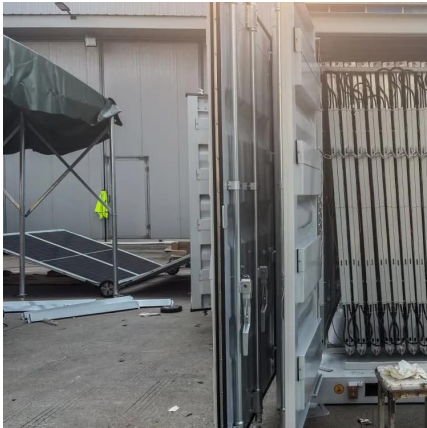
[Learn More](#)



Huawei Releases Next-Generation Site Energy Architecture ...

At the product and solution conference held during MWC25 Barcelona, He Bo, President of Huawei's Data Center Energy and Critical Power Supply product line, released ...

[Learn More](#)



[Huawei Releases Next-Generation Site Energy ...](#)

At the product and solution conference held during MWC25 Barcelona, He Bo, President of Huawei's Data Center Energy and Critical Power Supply product line, released the next-generation site energy ...

[Learn More](#)



Huawei unveils Single SitePower architecture and AI data ...

Huawei launched the Single SitePower architecture and RASTM guideline at MWC 2025, enhancing energy efficiency in AI data centers.

[Learn More](#)



[How Huawei is transforming telecom site ...](#)



Cost savings and operational efficiency are key concerns for operators worldwide, as revenues remain flat. Looking ahead, Huawei is exploring the integration of Huawei PanGu model into its site power ...

[Learn More](#)



[How Huawei is transforming telecom site resilience, ...](#)

Cost savings and operational efficiency are key concerns for operators worldwide, as revenues remain flat. Looking ahead, Huawei is exploring the integration of Huawei PanGu ...

[Learn More](#)



[Site Power Facility , Huawei Digital Power](#)

Huawei Site Power Facility offers energy-efficient, low-carbon power supply solutions, enabling carriers to build environmentally sustainable, resilient networks for modern ...

[Learn More](#)



[Huawei Reveals a Next-Generation Site Power Facility ...](#)

"The rise of network architectures centered on data centers in the intelligent era is driving higher demands for digital and intelligent energy." According to He Bo, Huawei Digital ...

[Learn More](#)



[Huawei unveils site power facility architecture](#)



According to He Bo, Huawei Digital Power is making continuous innovations in architectures and solutions to help operators thrive as energy prosumers. Single SitePower: ...

[Learn More](#)



Contact Us

For catalog requests, pricing, or partnerships, please visit:
<https://fundacjawandea-imk.pl>

Scan QR Code for More Information



<https://fundacjawandea-imk.pl>