

How to install batteries in the battery cabinet in the computer room





Overview

How do you put in a battery?

To put in batteries correctly, start by identifying the positive (+) and negative (-) terminals on both the battery and the device. For standard batteries, press the flat negative end against the spring in the compartment, then secure the positive end. For 9-Volt batteries, align the snaps at a slight angle before pushing down.

How do I put the batteries in the battery swapping cabinet?

Here is the complete guide on how to put the batteries in the battery swapping cabinet with a hard connection, step by step: Use the Tycorun Energy App to scan the qr code. Then you will hear the voice announcement "Please put the battery in the designated slots." The battery is returned successfully.

How do you put a new battery in a laptop?

If you're ready to pop in those fresh batteries, read on! For AA, AAA, C, and D batteries, slide the flat, negative end of the battery against the spring onto the device. Then, push the raised, positive end into the flat side of the compartment. For a 9-Volt battery, hold it at a 30° angle to line it up with the connector snaps.

How do you install a battery holder?

For AA, AAA, C, and D batteries, insert with the negative end against the spring; check for proper alignment. For 9-Volt batteries, align connectors at a 30-degree angle, press down firmly to secure them in place. Close the compartment securely after installation and regularly inspect for corrosion or damage.



How to install batteries in the battery cabinet in the computer room



[How to do UPS Battery Wiring?](#)

A. Determine the location of the battery switch, the positive and negative directions of the batteries in the battery cabinet, and install the air switch and terminal connectors on the ...

[Learn More](#)

[How to put batteries in](#)

Here is the complete guide on how to put the batteries in the battery swapping cabinet with a soft connection, step by step, refer to the video. (Please watch the video from ...

[Learn More](#)



[How to Install and Set Up a Battery Storage Cabinet at Home](#)

Understanding Battery Storage Cabinet Components and Benefits Key Components of a Battery Storage System A battery storage system is a sophisticated unit ...

[Learn More](#)



[Step By Step Instructions for How To Put Batteries In](#)

This article will guide you step by step on how to put batteries in properly, how to check the positive (+) and negative (-) ends, and how to follow the correct process based on ...



[Learn More](#)



[How to Insert Batteries: A Comprehensive Guide](#)

Batteries are essential components of many everyday devices, from remote controls and toys to smartphones and laptops. While it seems like a simple task, inserting ...

[Learn More](#)



[How to correctly install lithium battery energy ...](#)

Choose the correct installation location for your lithium battery energy storage cabinet First of all, we must determine the environmental conditions of the installation site to avoid extreme temperatures, such as ...

[Learn More](#)



[How to Install a Rack Lithium Battery System in 2025](#)

Installing a rack lithium battery system is essential for ensuring reliable power supply in data centers and server rooms in 2025.? How do you install a rack lithium battery system??The ...

[Learn More](#)





[How to Put Batteries In: Simple Steps for Any Device](#)

To put batteries in a device, start by checking the battery compartment for the type and polarity needed. For AA or AAA batteries, place the flat negative end against the spring ...

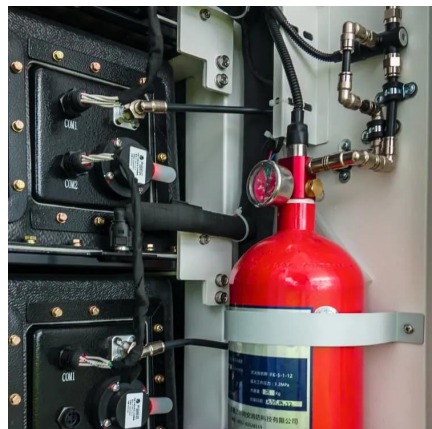
[Learn More](#)



[How to Put Batteries in Correctly: AA, AAA, 9V, & More](#)

In this article, we'll tell you where to find your device's battery compartment and how to install AA, AAA, C, D, 9-volt, and button batteries. If you're ready to pop in those fresh ...

[Learn More](#)



[How to Put Batteries In: Simple Steps for Any ...](#)

To put batteries in a device, start by checking the battery compartment for the type and polarity needed. For AA or AAA batteries, place the flat negative end against the spring and align the positive end ...

[Learn More](#)



[Install the Battery Modules in the Battery Cabinet](#)

Install the battery modules on the shelves from top to bottom. NOTE: Pay special attention to the location of type A and type B battery modules. Battery Configurations for Battery Cabinets with ...

[Learn More](#)

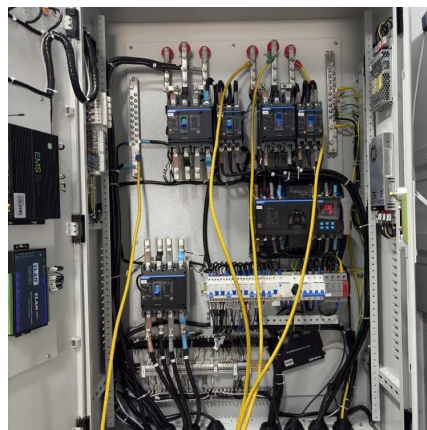




How to correctly install lithium battery energy storage cabinet?

Choose the correct installation location for your lithium battery energy storage cabinet. First of all, we must determine the environmental conditions of the installation site to ...

[Learn More](#)



Contact Us

For catalog requests, pricing, or partnerships, please visit:
<https://fundacjawandea-imk.pl>

Scan QR Code for More Information



<https://fundacjawandea-imk.pl>