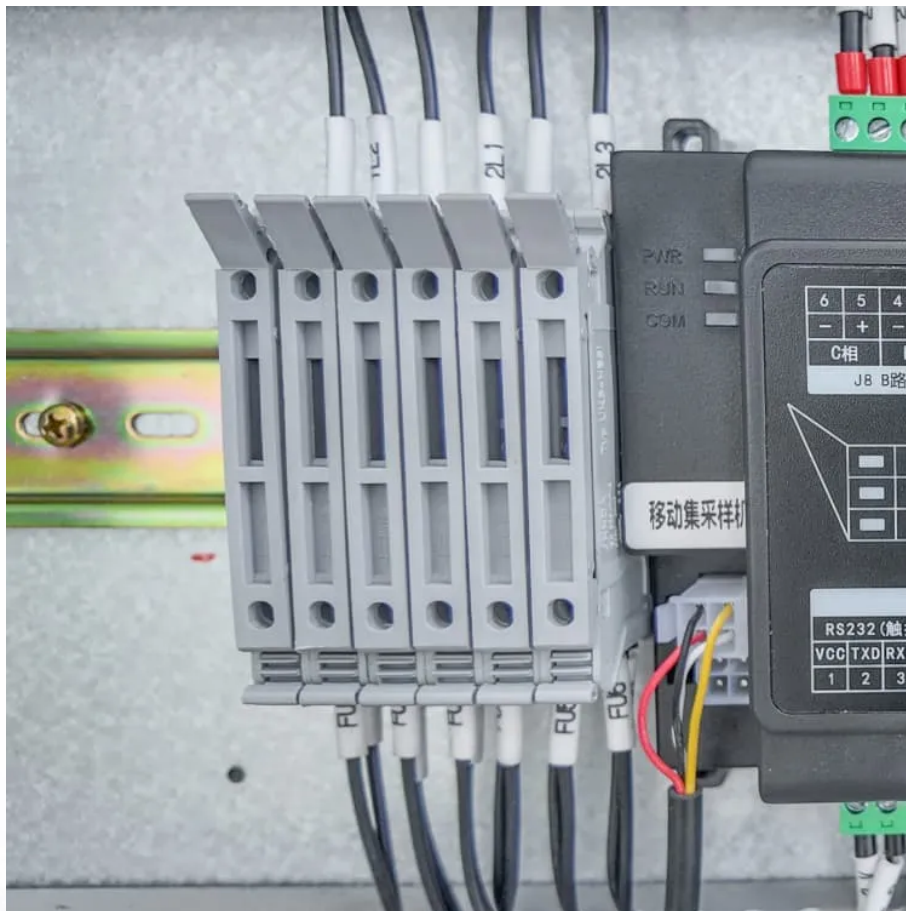


How to connect rtk base station to 220v power supply





Overview

How to connect RTK reference station?

Follow the onscreen instructions to connect RTK reference station and set network successfully.4. Go to Settings or tap the Status bar on the RTK reference station page to view its data or update the firmware if necessary. To optimize the performance of the RTK system, the RTK reference station must be in an open area to receive satellite signals.

Why should I set up my own RTK base station?

Setting up your own RTK base station gives you full control over your GNSS workflow, saves on subscription costs, and boosts your field accuracy. Whether you're working on construction, land surveying, or agriculture, this step-by-step guide will help you confidently set up a stable RTK base station using professional-grade equipment.

How do I power a RTK base station?

To power the base station from a power bank or PC. RTK base station has an SMA connector to connect an antenna. RTK base station does not include, but requires a good quality GPS/GNSS antenna. RTK base station supports full L1/L2/L5 bands.

How to connect RTK base station to router?

Connect the RTK base station to your router with an Ethernet cable. 14. In the toolbar, go to Communication->Ethernet. At the Ethernet Interface Mode, check Power on. In most of the routers automatic IP is used. To work in this way, select DHCP. If you prefer to set up your local IP manually, you can also do it from this menu.



How to connect rtk base station to 220v power supply



[How to Install RTK Reference Station](#)

The RTK reference station can be bound to the Mammotion app to monitor data such as the number of satellites received, signal strength, and more. Additionally, you can update the firmware through the app when needed. ...

[Learn More](#)

[Step-by-Step Guide to Setting Up an RTK](#)

...

Follow our detailed guide to correctly set up an RTK base station for accurate surveying. Simplify your workflow with expert tips and best practices.

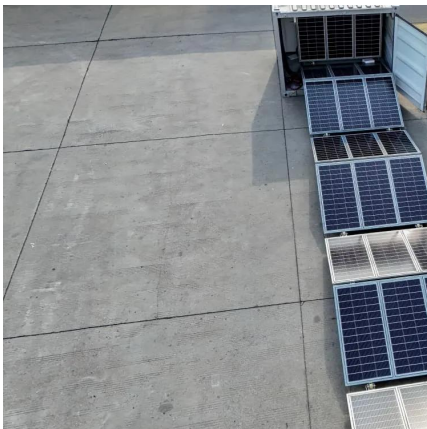
[Learn More](#)



[SparkFun RTK Reference Station Hookup Guide](#)

The RTK Reference Station comes with everything you need to get up and running. Our kit includes: Cased Reference Station L1/L2/L5 GNSS Surveying Antenna Reinforced RG58 TNC-SMA Cable SMA WiFi / ...

[Learn More](#)



[How to Install RTK Reference Station](#)

The RTK reference station can be bound to the Mammotion app to monitor data such as the number of satellites received, signal strength, and more. Additionally, you can update the ...



[Learn More](#)



[SparkFun RTK Reference Station Hookup Guide](#)

The RTK Reference Station comes with everything you need to get up and running. Our kit includes: Cased Reference Station L1/L2/L5 GNSS Surveying Antenna Reinforced RG58 TNC

...

[Learn More](#)



[XYLEM SURFBEE RTK BASE STATION ...](#)

Auto-connect With your Sur bee's Controller already connected to your USV, click Settings and look for NTRIP Options, selecting Auto-Connect. The system is going to look for your RTK base automatically. Manual Connect ...

[Learn More](#)



[ELT-RTK Base: Step-by-Step Connection Guide , GNSS Store](#)

Learn how to properly connect your ELT-RTK base with step-by-step instructions, tips on power supply, cables, and configuration for stable GNSS performance.

[Learn More](#)



[User Guide: RTK Base Station](#)

The ArduSimple RTK Base Station, powered by the Septentrio mosaic-X5 module, is designed to function as a Continuously Operating Reference Station (CORS) to provide high ...

[Learn More](#)



[Step-by-Step Guide to Setting Up an RTK Base Station](#)

Follow our detailed guide to correctly set up an RTK base station for accurate surveying. Simplify your workflow with expert tips and best practices.

[Learn More](#)



[USV : RTK Base Station Check List Version 1.4](#)

here it has a clear line of sight to the sky. Mount it on a stable support and insert it into the central slot. Then on the upper right-hand section of the case. Make sure th Setting up the ...

[Learn More](#)



[How to Set Up Your Own RTK Base Station Step-by-Step Guide](#)

Set up RTK base station from scratch. This guide covers gear, setup steps, GNSS configuration, tips to ensure stable corrections for high-precision surveying.

[Learn More](#)





[How to Set Up ELT_RTKBase: Power, Antenna, Connection](#)

Step-by-step guide to set up your GNSS RTK base station via Ethernet or WiFi. Learn power, mounting, WPS setup, Onocoy, and NTRIP settings.

[Learn More](#)



[XYLEM SURFBEE RTK BASE STATION MANUAL Pdf Download](#)

Auto-connect With your Sur bee's Controller already connected to your USV, click Settings and look for NTRIP Options, selecting Auto-Connect. The system is going to look for your RTK ...

[Learn More](#)

[GNSS ?????? ?????? RTK](#)

Connect the power cable to the base station and tighten the tightening nut on the connector. Connect the power supply to a 220V socket and protect from moisture.

[Learn More](#)



Contact Us

For catalog requests, pricing, or partnerships, please visit:
<https://fundacjawandea-imk.pl>



Scan QR Code for More Information



<https://fundacjawandea-imk.pl>