

How to connect a 60 kW inverter to the grid





Overview

How do you connect a grid inverter?

Most people prefer the series connection from on-grid panels because it significantly increases the voltage received by the grid inverter. To do that, you should connect the first panel's positive terminal to the second panel's negative terminal, which connects to the third panel's positive terminal and continues the process.

How to install a solar inverter?

Solar inverter installation varies depending on the type of configuration. Thus, to connect the grid inverter to the mains, you must choose if it will connect directly to the battery or not. For instance, the on-grid system inverter is connected directly to the mains, while the off-grid inverter output is first connected to a storage battery.

Can a solar inverter convert DC to AC?

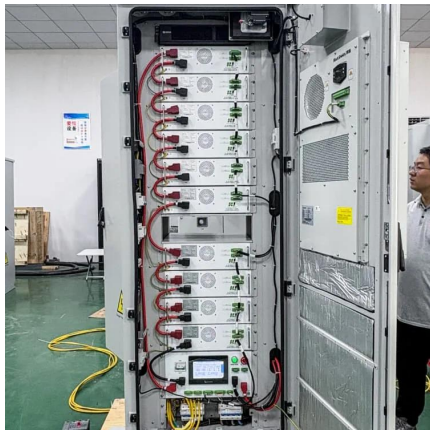
However, simply converting DC to AC is not enough. For safe and reliable integration with the electric grid, the solar inverter must precisely synchronize its AC output with the grid's voltage, frequency, and phase characteristics.

How does a grid-tie inverter work?

The grid-tie inverter is configured to a solar meter which later connects to the mains. The meter is used to calculate excess energy from the inverter grid, later stored in a utility grid for future consumption.



How to connect a 60 kW inverter to the grid



Connecting solar inverter to the grid step by step , Pas Solar

A grid-connected photovoltaic system is one in which the photovoltaic panels or array are connected to the public grid through a power inverter unit that allows them to operate ...

[Learn More](#)

How Does a Solar Inverter Synchronize with Grid , Complete ...

For safe and reliable integration with the electric grid, the solar inverter must precisely synchronize its AC output with the grid's voltage, frequency, and phase ...

[Learn More](#)



[Installation Operation Manual](#)

The MAX series inverter works as follows: 1>The PV panels gather solar to generate DC power to inverter. 2>With input current detection circuit, it can monitor all the PV panels' ...

[Learn More](#)



[How to Connect Hybrid Inverter to Grid?](#)

As more and more people shift to renewable energy sources, hybrid solar inverters have gained popularity as an effective means of harnessing solar energy. But the question that ...



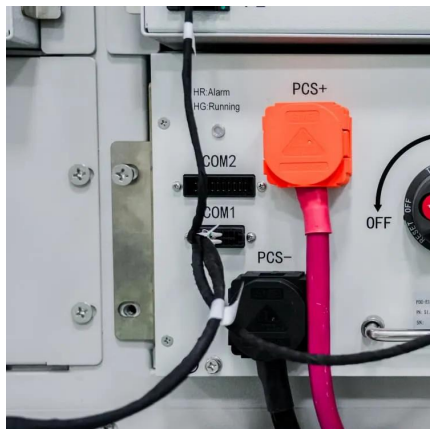
[Learn More](#)



[How to connect a PV solar system to the ...](#)

How To Connect PV Solar To Utility Grid Here are design tips for methods of PV system utility interconnection. The purpose of this article is to give you a basic understanding of the concepts and rules for connecting a solar ...

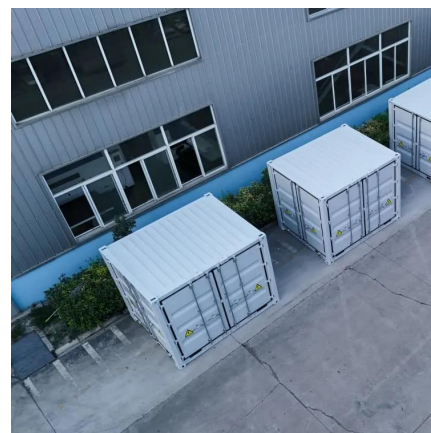
[Learn More](#)



[How To Connect Solar To Grid: Complete ...](#)

Learn how to safely connect solar panels to the electrical grid with our comprehensive guide covering permits, installation steps, safety requirements, and code compliance.

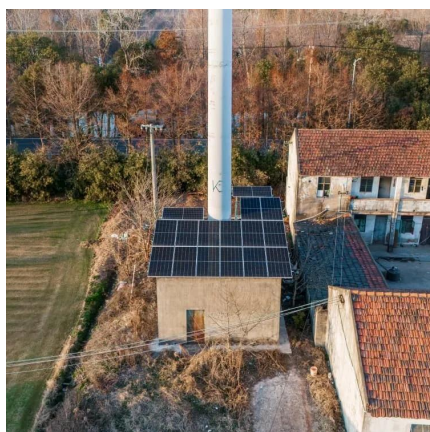
[Learn More](#)



[How to connect a PV solar system to the utility grid](#)

How To Connect PV Solar To Utility Grid Here are design tips for methods of PV system utility interconnection. The purpose of this article is to give you a basic understanding of the ...

[Learn More](#)

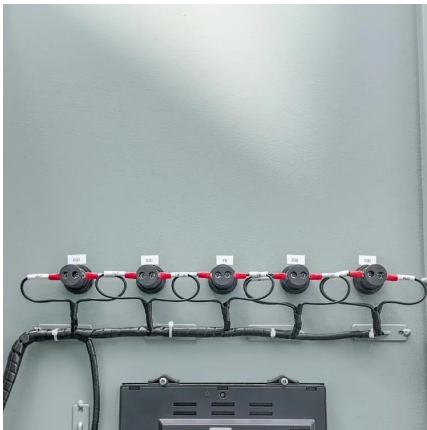




How to Connect Hybrid Inverter to Grid?

Learn how to connect a hybrid inverter to the grid and power your home with renewable energy. Our step-by-step guide makes installation easy.

[Learn More](#)



CPS Series Photovoltaic Grid Connection Inverter

The Grid connection type should be a 4-wire Wye, grounded neutral, the inverter may connect to the grid via 3 or 4-wires. The neutral conductor from the inverter to point of ...

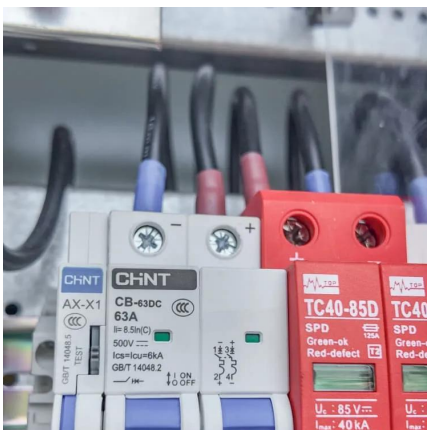
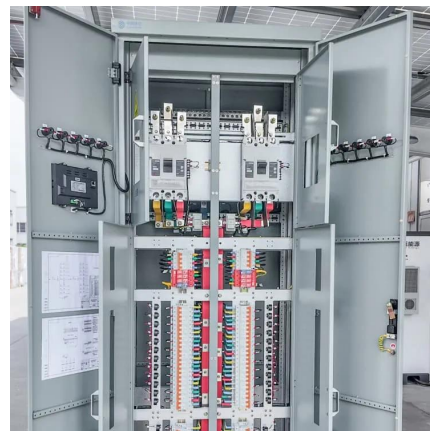
[Learn More](#)

Connecting an On-Grid Solar Inverter: A

...

On-grid solar inverters are crucial for converting the direct current (DC) generated by solar panels into alternating current (AC) used by household appliances or fed back into the electrical grid. These inverters ...

[Learn More](#)



Connecting an On-Grid Solar Inverter: A Comprehensive Guide

On-grid solar inverters are crucial for converting the direct current (DC) generated by solar panels into alternating current (AC) used by household appliances or fed back into the ...

[Learn More](#)



[Connecting solar inverter to the grid step by ...](#)

A grid-connected photovoltaic system is one in which the photovoltaic panels or array are connected to the public grid through a power inverter unit that allows them to operate in parallel with the electrical grid, ...

[Learn More](#)



How To Connect Solar To Grid: Complete Installation Guide ...

Learn how to safely connect solar panels to the electrical grid with our comprehensive guide covering permits, installation steps, safety requirements, and code ...

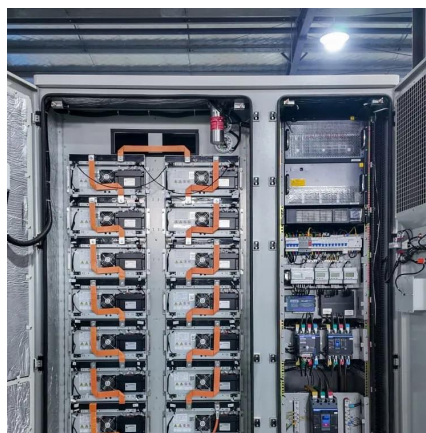
[Learn More](#)



[How to Connect Hybrid Inverter to Grid?](#)

Learn how to connect a hybrid inverter to the grid and power your home with renewable energy. Our step-by-step guide makes installation easy.

[Learn More](#)



[How to Connect Hybrid Inverter to Grid?](#)

As more and more people shift to renewable energy sources, hybrid solar inverters have gained popularity as an effective means of harnessing solar energy. But the question that still remains is can hybrid ...

[Learn More](#)



Contact Us

For catalog requests, pricing, or partnerships, please visit:
<https://fundacjawandea-imk.pl>

Scan QR Code for More Information



<https://fundacjawandea-imk.pl>