

# How much watts of power does a 5G base station consume normally





## Overview

---

How much power does a 5G station use?

The power consumption of a single 5G station is 2.5 to 3.5 times higher than that of a single 4G station. The main factor behind this increase in 5G power consumption is the high power usage of the active antenna unit (AAU). Under a full workload, a single station uses nearly 3700W.

Why does 5G use more power than 4G?

The data here all comes from operators on the front lines, and we can draw the following valuable conclusions: The power consumption of a single 5G station is 2.5 to 3.5 times higher than that of a single 4G station. The main factor behind this increase in 5G power consumption is the high power usage of the active antenna unit (AAU).

Why is low 5G energy consumption important?

With new devices and use cases increasing the capacity of the networks, the demand to ensure low 5G energy consumption is critical to minimizing operator expenses and ensuring they can still meet energy reduction goals. How can NR bring an answer?

Figure 1: Global mobile data traffic outlook [Ericsson Mobility Report, June 2019].

What is a 5G base station?

A 5G base station is mainly composed of the baseband unit (BBU) and the AAU — in 4G terms, the AAU is the remote radio unit (RRU) plus antenna. The role of the BBU is to handle baseband digital signal processing, while the AAU converts the baseband digital signal into an analog signal, and then modulates it into a high-frequency radio signal.



## How much watts of power does a 5G base station consume normally

---



### [How Much Power Does a 5G Base Station Consume? - Smart ...](#)

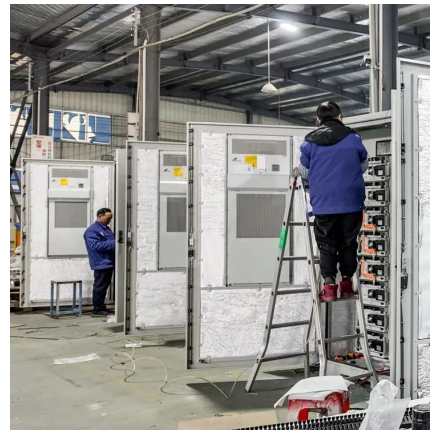
The rise of 5G technology brings faster speeds and lower latency, but it also raises questions about its energy consumption. As 5G networks are rolled out across the globe, it is important ...

[Learn More](#)

### [What is 5G Energy Consumption?](#)

The 5G network is a dynamic system that consumes energy continually and responds to spikes in network activity. Over 70% of this energy is consumed by RAN ...

[Learn More](#)



### [How much power does 5G consume?](#)

The promise around 5G is enormous, and an enchanting high-tech future is projected for us. But what about power consumption and climate impact? How much electricity does 5G consume?

...

[Learn More](#)



### [Base station 5G power consumption](#)

How much power does a 5G station use? The power consumption of a single 5G station is 2.5 to 3.5 times higher than that of a single 4G station. The main factor behind this ...



[Learn More](#)



### [Front Line Data Study about 5G Power Consumption](#)

Facebook Twitter LinkedIn The two figures above show the actual power consumption test results of 5G base stations from different manufacturers, ZTE and HUAWEI, in ...

[Learn More](#)



### [What is the Power Consumption of a 5G Base Station?](#)

Increased Data Processing and Complexity These 5G base stations consume about three times the power of the 4G stations. The main reason for this spike in power ...

[Learn More](#)



### [5G power consumption is 2.5 to 3 times of 4G](#)

The power consumption of a 5G single station is 2.5 to 3.5 times that of a 4G single station due to AAU power consumption, the current full load power of a single station is nearly ...

[Learn More](#)







## [How Much Power Does 5G Base Station Consume? , HuiJue ...](#)

The Silent Energy Crisis in Mobile Networks Have you ever wondered how much energy our hyper-connected world is consuming? 5G base stations, the backbone of next-gen ...

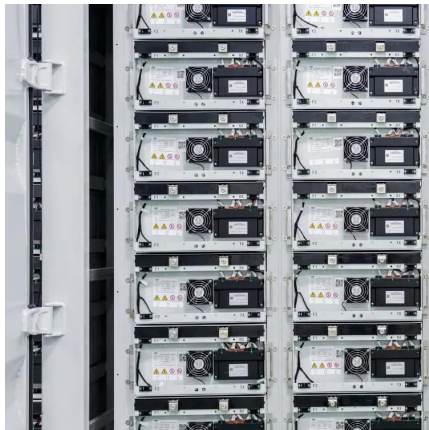
[Learn More](#)



## [Power consumption based on 5G communication](#)

This paper proposes a power control algorithm based on energy efficiency, which combines cell breathing technology and base station sleep technology to reduce base station ...

[Learn More](#)



## [A technical look at 5G energy consumption and performance](#)

Base Station Power ConsumptionEnergy Saving Features of 5G New RadioHow Much Energy Can We Save with Nr Sleep Modes?Impact on Energy Efficiency and Performance in A Super Dense Urban ScenarioFurther ReadingToday we see that a major part of energy consumption in mobile networks comes from the radio base station sites and that the consumption is stable. We can also see that even in densely deployed networks, as in city centers, the network traffic load can fluctuate very much during the day, with significant periods of almost no traffic in the base sta See more on ericsson jrseco



## **How much power does 5G consume? - JRS ...**

The promise around 5G is enormous, and an enchanting high-tech future is projected for us. But what about power consumption and climate impact? How much electricity does 5G consume?



To achieve gigabit speeds, the ...

[Learn More](#)



### [5G power consumption is 2.5 to 3 times of 4G ...](#)

The power consumption of a 5G single station is 2.5 to 3.5 times that of a 4G single station due to AAU power consumption, the current full load power of a single station is nearly 3700W.

[Learn More](#)

### [Front Line Data Study about 5G Power ...](#)

Facebook Twitter LinkedIn The two figures above show the actual power consumption test results of 5G base stations from different manufacturers, ZTE and HUAWEI, in Guangzhou and Shenzhen, by an ...

[Learn More](#)



## Contact Us

For catalog requests, pricing, or partnerships, please visit:  
<https://fundacjawandea-imk.pl>

**Scan QR Code for More Information**



<https://fundacjawandea-imk.pl>