

# How much power does the mobile base station have





## Overview

---

How do base stations affect mobile cellular network power consumption?

Base stations represent the main contributor to the energy consumption of a mobile cellular network. Since traffic load in mobile networks significantly varies during a working or weekend day, it is important to quantify the influence of these variations on the base station power consumption.

Do base stations dominate the energy consumption of the radio access network?

Furthermore, the base stations dominate the energy consumption of the radio access network. Therefore, it is reasonable to focus on the power consumption of the base stations first, while other aspects such as virtualization of compute in the 5G core or the energy consumption of user equipment should be considered at a later stage.

What are base station models?

The base station models vary in their approaches and potential use cases. Hereafter, the models are grouped according to these aspects. Main component models only model the power consumption of the main base station components (power amplifier, analog frontend, baseband unit, active cooling, power supply) separately.

Can a base station Power model be combined?

As the main components are common to most of the models, they can be easily combined to form a new model. Most of the base station power models are based on measurements of LTE (4G) hardware or theoretical assumptions. For the more recent models, based on measurements of 5G hardware, the parameter values are not publicly available.



## How much power does the mobile base station have

---



### Electric load characteristics analysis of 5G base stations in ...

5G base station (BS) is a fundamental part of 5th generation (5G) mobile networks. To meet the high requirements of the future mobile communication, 5G BS has ...

[Learn More](#)



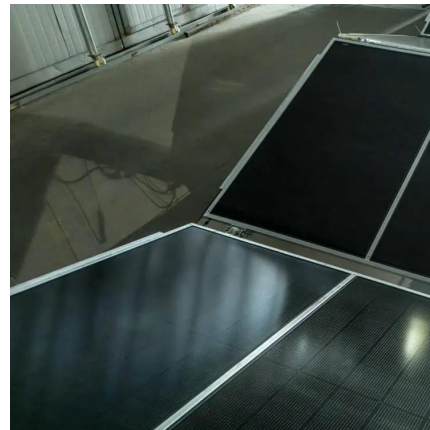
### Table 1 Power consumption of the base station components ...

In this paper, the energy efficiency of a femtocell base station is investigated and compared for various bit rates and for three different wireless technologies namely, mobile WiMAX, HSPA, ...

[Why does 5g base station consume so much power and how ...](#)

The power consumption of the 5G base station mainly comes from the AU module processing and conversion and high power-consuming high radio frequency signals, the ...

[Learn More](#)



### Measurements and Modelling of Base Station Power Consumption under Real

Abstract Base stations represent the main contributor to the energy consumption of a mobile cellular network. Since traffic load in mobile networks significantly varies during a working or ...

[Learn More](#)



[Learn More](#)



## Base Stations

The present-day tele-space is incomplete without the base stations as these constitute an important part of the modern-day scheme of wireless communications. They are referred to as cell towers or cellular ...

[Learn More](#)



[Why does 5g base station consume so much...](#)



[What is the Power Consumption of a 5G Base Station?](#)

Compared to its predecessor, 4G, the energy demand from 5G base stations has massively grown owing to new technical requirements needed to support higher data rates ...

[Learn More](#)



[How Much Power Does 5G Base Station Consume? , HuiJue ...](#)

The Silent Energy Crisis in Mobile Networks Have you ever wondered how much energy our hyper-connected world is consuming? 5G base stations, the backbone of next-gen ...

[Learn More](#)





The power consumption of the 5G base station mainly comes from the AU module processing and conversion and high power-consuming high radio frequency signals, the extremely high-algorithm and high ...

[Learn More](#)



### Base Stations

The present-day tele-space is incomplete without the base stations as these constitute an important part of the modern-day scheme of wireless communications. They are ...

[Learn More](#)



### Comparison of Power Consumption Models for 5G Cellular Network Base

This paper conducts a literature survey of relevant power consumption models for 5G cellular network base stations and provides a comparison of the models. It highlights ...

[Learn More](#)



### ICNIRP , Base Stations

The power of a base station varies (typically between 10 and 50 watts) depending on the area that needs to be covered and the number of calls processed. This is low compared to other ...

[Learn More](#)

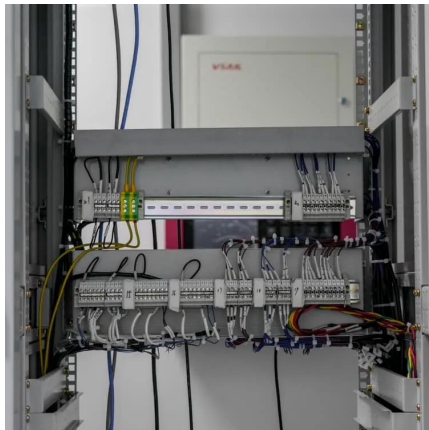


[Power Consumption: 5G Basestations Are Hungry, Hungry ...](#)



5G basestations are pushing up power requirements by three times, as MIMO and more digital circuitry require more power.

[Learn More](#)



[Table 1 Power consumption of the base ...](#)

In this paper, the energy efficiency of a femtocell base station is investigated and compared for various bit rates and for three different wireless technologies namely, mobile WiMAX, HSPA, and

[Learn More](#)

## Contact Us

---

For catalog requests, pricing, or partnerships, please visit:  
<https://fundacjawandea-imk.pl>

**Scan QR Code for More Information**



<https://fundacjawandea-imk.pl>