

# How much power does a 400 watt inverter have





## Overview

---

How many watts can a 400 watt inverter run?

**Size and power:** A 400 watt inverter can provide continuous power of up to 400 watts, allowing it to run a range of small appliances and electronics.

**Device compatibility:** It can power devices such as laptops, small televisions, cell phones, digital cameras, and other low-power electrical devices.

What if a 400 watt inverter fails?

If the peak power of an appliance is 600 watts, a 400-watt inverter fails to support it. Continuous power is the steady power that a device can handle. It is often the power rate on the devices. For example, you get a 1000-watt microwave oven. It is the continuous power of the microwave oven, not the peak. The peak power is more than 1000 watts.

What can you run with a 400 power inverter?

With 400 power watts inverter, you can enjoy a lot of advantages. For example, it can run a small television, refrigerator, tablets, laptop, power tools, cameras, DVD player, etc. Now here in this section, I am going to list some daily use equipment & standard accessories that you can run with a 400 power inverter.

Can a 400 watt inverter run a TV?

If your TV consumes 50 watts or less, then a 400 watt inverter should be able to run it without any issues. However, if your TV consumes more than 50 watts, you may run into problems. The inverter may struggle to provide enough power, resulting in improper functioning or even failure to power the TV altogether.



## How much power does a 400 watt inverter have

---



### [400w Power Inverter: Convenient and Efficient Solutions](#)

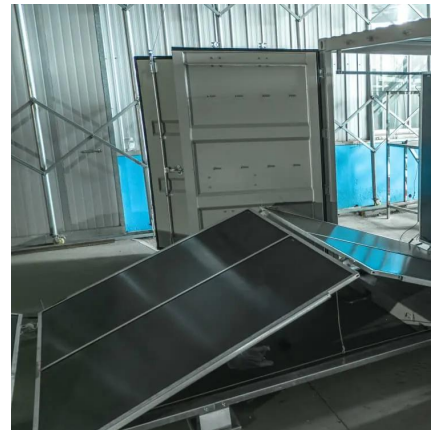
However, a 400 watt inverter may be able to power a small refrigerator that requires much less than 400 watts of continuous power. Be sure to check the surge power ...

[Learn More](#)

### **What Will a 400 Watt Power Inverter Run? Things to Consider ...**

So if you have a 400 watts power inverter, then you can easily run a freezer. Things To Consider When Choosing A 400 Watt Power Inverter Purchasing a good power ...

[Learn More](#)



### [400-watt Inverter: List of Devices You Can Run](#)

The power can run differently for each device. LED TV (100 watts) for 3 hours Wi-Fi Router (20 watts) for 5 hours Laptop Charger (60 watts) for 4 hours You can understand that a ...

[Learn More](#)

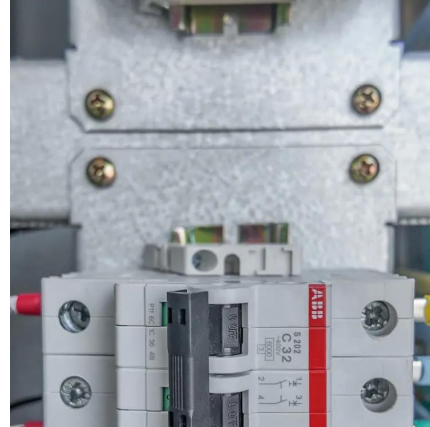


### [What Can a 400 Watt Inverter Run?](#)

400 watt modified sine wave inverters run electrical devices such as small televisions, laptops, digital cameras, small power refrigerators (car refrigerators), and other ...



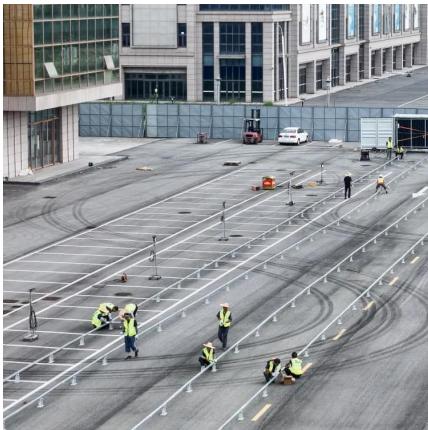
[Learn More](#)



### [400 Watt Inverter Uses: What It Powers & Why It's Worth It](#)

Discover the power and versatility of a 400 watt inverter--compact, efficient, and perfect for camping, RVs, or emergency backup to run your essential devices reliably.

[Learn More](#)



### [What Will a 400 Watt Power Inverter Run?](#)

While a 400-Watt power inverter has its limitations, it can still run a variety of devices that are essential for everyday use. From charging laptops and smartphones to ...

[Learn More](#)



### [What Will a 400 Watt Power Inverter Run? ...](#)

So if you have a 400 watts power inverter, then you can easily run a freezer. Things To Consider When Choosing A 400 Watt Power Inverter Purchasing a good power inverter is one of the significant ...

[Learn More](#)





## [400w Power Inverter: Convenient and Efficient ...](#)

However, a 400 watt inverter may be able to power a small refrigerator that requires much less than 400 watts of continuous power. Be sure to check the surge power requirements for this fridge. It is also ...

[Learn More](#)



## [What Can a 400 Watt Inverter Run? Essential ...](#)

Unlock the potential of portable power with our guide on what will a 400 watt power inverter run, from small appliances to tech gadgets.

[Learn More](#)

## [Power Inverter 400 Watts: Get the Most Out of Your Inverter](#)

While the Pure Line Power Inverter 400 watts has many benefits, it does have some limitations, such as restricted power output, which means it may not be suitable for ...

[Learn More](#)



## [HOW MUCH POWER SHOULD A 400 WATT INVERTER HAVE?](#)

How much power does an inverter use? In some configurations, a standard inverter may consume between 0.416 amps and 2.83 amps of power in idle mode. This amount may vary depending ...

[Learn More](#)



## What Will a 400 Watt Power Inverter Run?

While a 400-Watt power inverter has its limitations, it can still run a variety of devices that are essential for everyday use. From charging laptops and smartphones to operating small kitchen appliances or running ...

[Learn More](#)



## What Can a 400 Watt Inverter Run?

400 watt modified sine wave inverters run electrical devices such as small televisions, laptops, digital cameras, small power refrigerators (car refrigerators), and other electrical devices that are not very powerful.

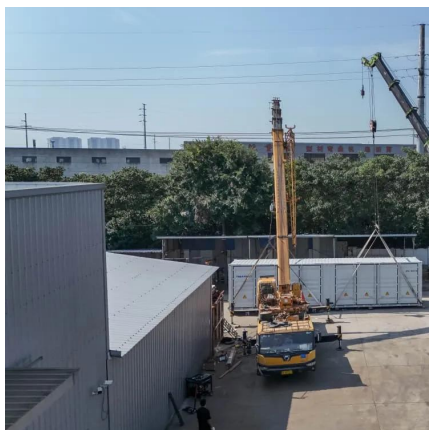
[Learn More](#)



## What Can a 400 Watt Inverter Run? Essential Guide

Unlock the potential of portable power with our guide on what will a 400 watt power inverter run, from small appliances to tech gadgets.

[Learn More](#)



## Best Solar Inverter For 400 Watt [Updated: December 2025]

What is a Solar Inverter and What Role Does It Play in 400 Watt Systems? A solar inverter is a device that converts direct current (DC) electricity generated by solar panels into ...

[Learn More](#)



## Contact Us

---

For catalog requests, pricing, or partnerships, please visit:  
<https://fundacjawandea-imk.pl>

### Scan QR Code for More Information



<https://fundacjawandea-imk.pl>