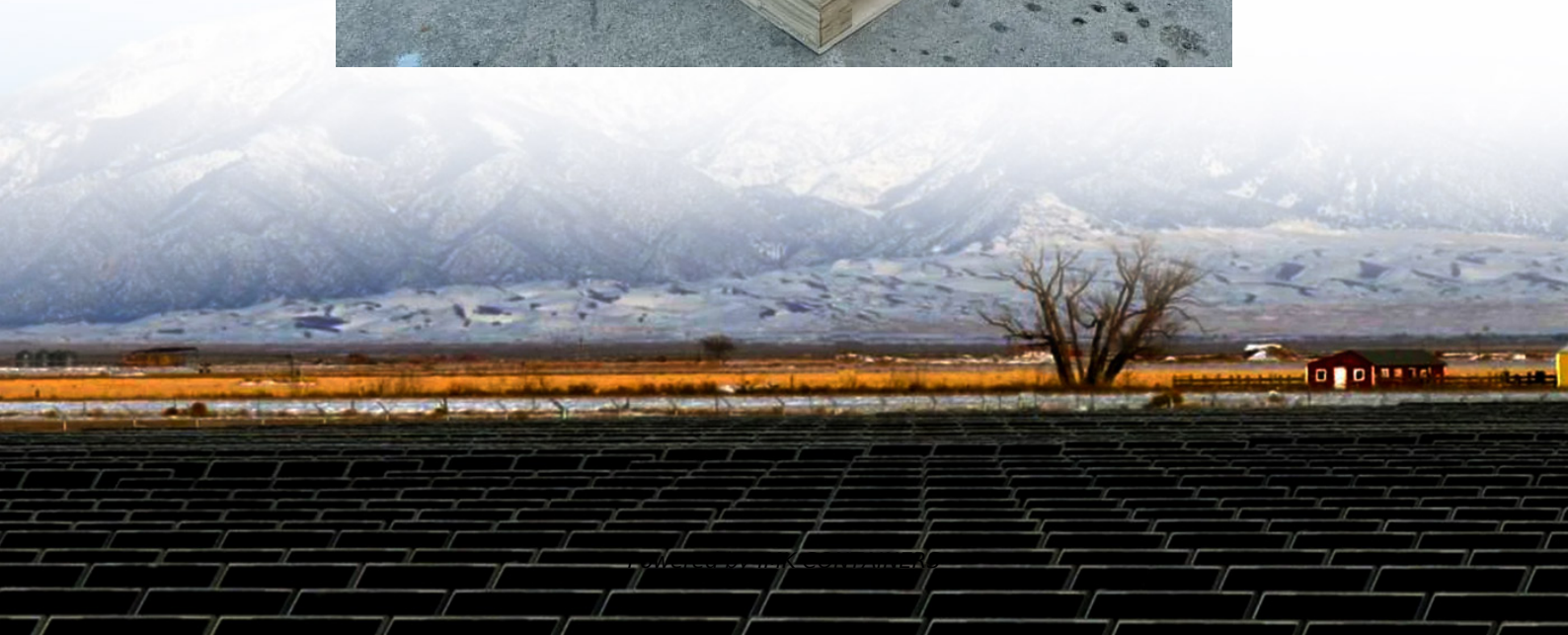


How much is the battery system BMS supply voltage





Overview

What is a battery management system (BMS)?

The Battery Management System (BMS) in electric vehicles monitors and controls key aspects of the battery's performance. It tracks voltage , temperature , and charge levels to ensure the battery operates safely. The BMS also balances cells to ensure even charging and discharging, preventing overcharging or over-discharging.

What are the components of a battery management system (BMS)?

A typical battery management system (BMS) consists of the following main components: Battery Management Controller (BMC), Voltage and Current Sensors, Temperature Sensors, Balancing Circuit, and Power Supply Unit.

How does BMS calculate battery capacity?

A Battery Management System (BMS) calculates key battery metrics, including the available battery capacity compared to its full capacity, known as State of Charge (SoC).

Why should you use a battery monitoring system (BMS)?

By doing all of this, the BMS helps extend battery life, improve efficiency, and ensure the safety of your EV. 1. Voltage Monitoring and Control (Lithium-Ion Battery Example) In Lithium-Ion batteries, each cell has a voltage range —usually between 2.5V to 4.2V.



How much is the battery system BMS supply voltage



[How BMS Works on Batteries in EV: Boosting Performance. ...](#)

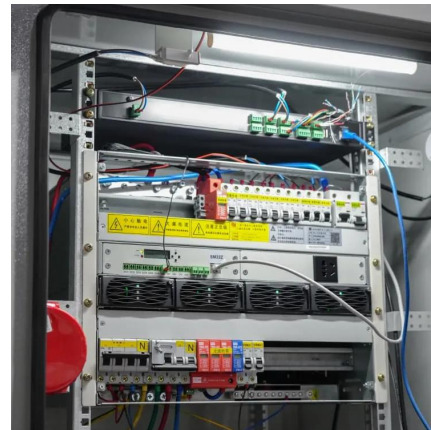
The Battery Management System (BMS) is a crucial component in all types of electric vehicle (EV) batteries, ensuring they operate safely, efficiently, and last longer. ...

[Learn More](#)

[How to Detect and Keep Types of BMS ...](#)

BMS is an important part of maintaining the normal operation of a battery system, and balancing the BMS voltage is particularly critical.

[Learn More](#)



[A Beginner's Guide to Battery Management ...](#)

Below is a simple introduction to common terms related to Battery Management Systems (BMS), designed to help beginners understand the basics. This guide covers "1S," "BMS," "voltage," "circuit," ...

[Learn More](#)

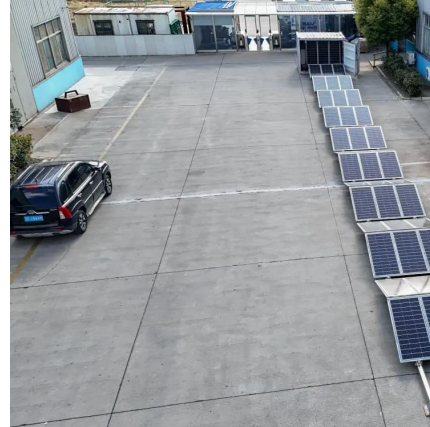


[How a Battery Management System \(BMS\) Measures Voltage ...](#)

How the BMS Measures Voltage: From Cells to the Whole Pack Accurately measuring voltage is one of the most important jobs of a Battery Management System (BMS).



[Learn More](#)



[How BMS Works on Batteries in EV: Boosting ...](#)

The Battery Management System (BMS) is a crucial component in all types of electric vehicle (EV) batteries, ensuring they operate safely, efficiently, and last longer. Whether it's Lithium-Ion, Nickel ...

[Learn More](#)



[Battery Management System \(BMS\) - ...](#)

What is a BMS? A Battery Management System (BMS) is an electronic system that monitors and manages rechargeable batteries (especially lithium-ion) to ensure safe and efficient operation. It protects ...

[Learn More](#)



[How a Battery Management System \(BMS\) ...](#)

How the BMS Measures Voltage: From Cells to the Whole Pack Accurately measuring voltage is one of the most important jobs of a Battery Management System (BMS).

[Learn More](#)





How to Detect and Keep Types of BMS Voltage for Your Battery ...

BMS is an important part of maintaining the normal operation of a battery system, and balancing the BMS voltage is particularly critical.

[Learn More](#)



[Battery Management System \(BMS\) Detailed ...](#)

Battery Management System (BMS) is the "intelligent manager" of modern battery packs, widely used in fields such as electric vehicles, energy storage stations, and consumer electronics. Its core task ...

[Learn More](#)



[How to Determine the Charging Voltage for Your Battery ...](#)

Determining the correct charging voltage for your Battery Management System (BMS) is essential for maintaining battery health and safety. The recommended charging ...

[Learn More](#)



[Battery Management System \(BMS\) - Explained](#)

What is a BMS? A Battery Management System (BMS) is an electronic system that monitors and manages rechargeable batteries (especially lithium-ion) to ensure safe and ...

[Learn More](#)

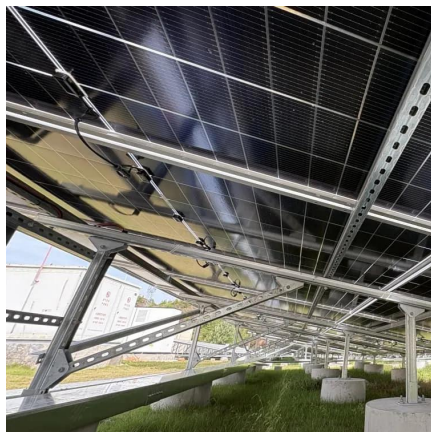




[Battery Management Systems \(BMS\): A ...](#)

A Battery Management System (BMS) is essential for ensuring the safe and efficient operation of battery-powered systems. From real-time monitoring and cell balancing to thermal management and fault detection, ...

[Learn More](#)



[Battery Management System Guide: ...](#)

Comprehensive guide to Battery Management Systems (BMS), covering functions, circuits, components, and selection tips for safer, more reliable lithium-ion battery packs.

[Learn More](#)

[Battery Management System \(BMS\) Detailed Explanation: ...](#)

Battery Management System (BMS) is the "intelligent manager" of modern battery packs, widely used in fields such as electric vehicles, energy storage stations, and consumer ...

[Learn More](#)



[Battery Management Systems \(BMS\): A Complete Guide](#)

A Battery Management System (BMS) is essential for ensuring the safe and efficient operation of battery-powered systems. From real-time monitoring and cell balancing to thermal ...

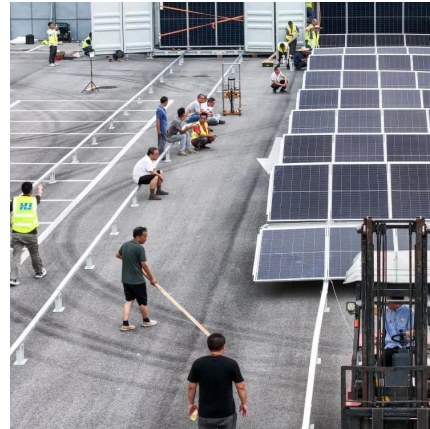
[Learn More](#)



Battery Management System (BMS) -- Why It Protects Safe Battery ...

A Battery Management System (BMS) is essential for controlling, monitoring, and protecting any solar energy storage battery. It ensures voltage, temperature, and current ...

[Learn More](#)



[Battery Management System Guide: Functions, Circuits](#)

Comprehensive guide to Battery Management Systems (BMS), covering functions, circuits, components, and selection tips for safer, more reliable lithium-ion battery packs.

[Learn More](#)

[A Beginner's Guide to Battery Management System](#)

Below is a simple introduction to common terms related to Battery Management Systems (BMS), designed to help beginners understand the basics. This guide covers "1S," ...

[Learn More](#)



Contact Us

For catalog requests, pricing, or partnerships, please visit:
<https://fundacjawandea-imk.pl>



Scan QR Code for More Information



<https://fundacjawandea-imk.pl>