

How much does it cost to convert 48v inverter to 220v





Overview

What is a 48 watt inverter?

48V 2000W power inverter with universal socket and USB port, modified sine wave or pure sine wave output waveform are available. Option for 110V/120V or 220V/230V/240V AC 50Hz/60Hz, suitable DC to AC inverter for home use to charge TV, laptop, fans, lights and other appliances. Storage temperature of this 2000 watt inverter between -30 °C to +70 °C.

How does a 48V power inverter work?

In terms of functionality, a 48V power inverter typically consists of several key components. These include a DC input, an inverter circuit that converts DC to AC power, control electronics for regulating the output voltage and frequency, and output sockets or terminals to connect AC-powered devices.

How much does a 220V to 110V converter cost?

The BESTEK Universal Travel Adapter costs \$41.99. It is a 220V to 110V Voltage Converter with 6A 4-Port USB Charging and includes several universal adapters, making it convenient for traveling.

What is the working temperature of a 48V 5000W inverter?

Working temperature of this 48V 5000W inverter between -10 °C to 50 °C. A 48V power inverter is a device used to convert direct current (DC) electrical power from a 48-volt battery or DC power source into alternating current (AC) power. In terms of functionality, a 48V power inverter typically consists of several key components.



How much does it cost to convert 48v inverter to 220v



48v Inverter, 48v DC to 120v/220v AC Power Inverter , inverter...

48V 2000W power inverter with universal socket and USB port, modified sine wave or pure sine wave output waveform are available. Option for 110V/120V or 220V/230V/240V AC ...

[Learn More](#)

Pure Sine Wave Inverter 4kw 8kw 8000W 48V to 220V Converter Inverters

Product Description Product Description Pure Sine Wave Inverter 4000W 8kw 8000w 48V to 220V 230V Converter Inverters Power inverter converts 12V or 24V DC from ...

[Learn More](#)



[800 Watt Modified Sine Wave Inverter, ...](#)

The 800W modified sine wave inverter, converting 48VDC to 220VAC with an output power of 800W and a peak power of 1600W, this inverter efficiently converts DC power from a 48V battery (with an input voltage range of 38V ...

[Learn More](#)

[48v Inverter, 48v DC to 120v/220v AC Power ...](#)

48V 2000W power inverter with universal socket and USB port, modified sine wave or pure sine wave output waveform are available. Option for 110V/120V or 220V/230V/240V AC 50Hz/60Hz,



suitable DC to AC inverter for home ...

[Learn More](#)



[How to Choose the Best Inverter 48V 220V for Your Power ...](#)

Learn what to look for when buying an inverter 48v 220v: key specs, types, safety tips, and real buyer insights to make a smart purchase.

[Learn More](#)



[Pure Sine Wave Inverter 48V to 220V 4kVA 8kVA 4kw 8kw](#)

Pure Sine Wave Inverter 48V to 220V 4kVA 8kVA 4kw 8kw, Find Details and Price about Inverter Inverter 12V 220V from Pure Sine Wave Inverter 48V to 220V 4kVA 8kVA 4kw ...

[Learn More](#)



[48 Volt DC to 220 Volt AC Converter Inverter Price](#)

XINDUN best sell 48 volt 220 volt inverter at low price. DC to AC converter inverter use for ac load with total power not exceed 4000w/5000w/6000w.

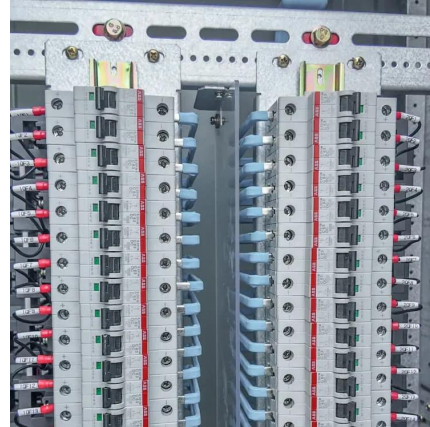
[Learn More](#)



[Solar 48V Inverters For Sale , 48v DC to 220v AC](#)

The 48V inverter is a piece of electrical equipment designed to convert 48 volt DC power from batteries or solar panels to AC that can be directly supplied to home appliances. These Solar ...

[Learn More](#)



[Amazon : 48v To 220v Inverter](#)

Amazon : 48v to 220v inverter ClimeCo certifies products whose carbon emissions have been assessed, verified, decarbonized, and are on a committed path towards continual emissions ...

[Learn More](#)

[Alibaba : 48V to 220V lithium battery inverter, 5000w ...](#)

Product details The Factory Price DC 48V to AC220V Lithium Battery Pure Sine Wave Bidirectional Circuit Board is a high-performance power inverter designed for 5000W ...

[Learn More](#)



[800 Watt Modified Sine Wave Inverter, 48VDC to 220VAC](#)

The 800W modified sine wave inverter, converting 48VDC to 220VAC with an output power of 800W and a peak power of 1600W, this inverter efficiently converts DC power from a 48V ...

[Learn More](#)



Inverter 48V 220V

This powerful device allows users to convert direct current (DC) into alternating current (AC), making it ideal for powering appliances, electronics, and even entire homes from renewable ...

[Learn More](#)



Contact Us

For catalog requests, pricing, or partnerships, please visit:
<https://fundacjawandea-imk.pl>

Scan QR Code for More Information



<https://fundacjawandea-imk.pl>