

How many watts of power does a large base station have





Overview

How much power does a base station have?

Maximum base station power is limited to 38 dBm output power for Medium-Range base stations, 24 dBm output power for Local Area base stations, and to 20 dBm for Home base stations. This power is defined per antenna and carrier, except for home base stations, where the power over all antennas (up to four) is counted.

What is the maximum base station Power?

Maximum base station power is limited to 24 dBm output power for Local Area base stations and to 20 dBm for Home base stations, counting the power over all antennas (up to four). There is no maximum base station power defined for Wide Area base stations.

What is base station Power?

Base station power refers to the output power level of base stations, which is defined by specific maximum limits (24 dBm for Local Area base stations and 20 dBm for Home base stations) and includes tolerances for deviation from declared power levels, as well as specifications for total power control dynamic range. How useful is this definition?

.

How much power does a cellular base station use?

A cellular base station can use anywhere from 1 to 5 kW power per hour depending upon the number of transceivers attached to the base station, the age of cell towers, and energy needed for air conditioning. Cellular base stations use power without any interruption and also needs maintenance.



How many watts of power does a large base station have



Power Base Station

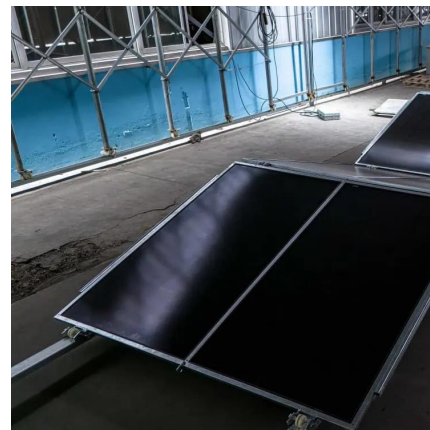
The transmitter characteristics define RF requirements for the wanted signal transmitted from the UE and base station, but also for the unavoidable unwanted emissions outside the transmitted ...

[Learn More](#)

[Table 1 Power consumption of the base ...](#)

In this paper, the energy efficiency of a femtocell base station is investigated and compared for various bit rates and for three different wireless technologies namely, mobile WiMAX, HSPA, and

[Learn More](#)



[5G base stations use a lot more energy than ...](#)

Carriers have been looking at energy efficiency for a few years now, but 5G will bring this to top of mind because it's going to use more energy than 4G. Telcos spend on average 5% to 6% of their operating ...

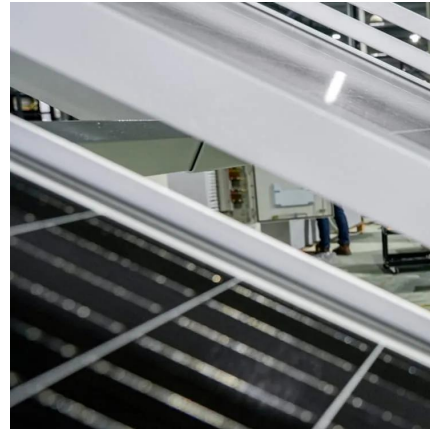
[Learn More](#)



[How Much Power Does 5G Base Station Consume?](#)

The Silent Energy Crisis in Mobile Networks Have you ever wondered how much energy our hyper-connected world is consuming? 5G base stations, the backbone of next-gen ...

[Learn More](#)



antenna

I want to know how much power is radiated by cell towers of GSM (1.8 GHz), 3G (2.1 GHz), 4G (2.6 GHz.) I want links to references if ...

[Learn More](#)



[Energy-Efficient Base Stations](#)

The impact of the Base Stations comes from the combination of the power consumption of the equipment itself (up to 1500 Watts for a nowadays macro base station) ...

[Learn More](#)



[ICNIRP , Base Stations](#)

Over large distances, the signals must be relayed by a communication network comprising base stations and often supported by a wired network. The power of a base station varies (typically ...

[Learn More](#)



[Base stations and networks](#)



The antenna output power level is typically between 20 watts and a few hundred watts for an outdoor base station. Television transmitters, by comparison, have 10-1000 times ...

[Learn More](#)



Table 1 Power consumption of the base station components ...

In this paper, the energy efficiency of a femtocell base station is investigated and compared for various bit rates and for three different wireless technologies namely, mobile WiMAX, HSPA, ...

[Learn More](#)



antenna

I want to know how much power is radiated by cell towers of GSM (1.8 GHz), 3G (2.1 GHz), 4G (2.6 GHz.) I want links to references if possible.

[Learn More](#)



5G base stations use a lot more energy than 4G base stations...

Carriers have been looking at energy efficiency for a few years now, but 5G will bring this to top of mind because it's going to use more energy than 4G. Telcos spend on ...

[Learn More](#)



[Power Consumption: 5G Basestations Are Hungry, Hungry ...](#)



5G basestations are pushing up power requirements by three times, as MIMO and more digital circuitry require more power.

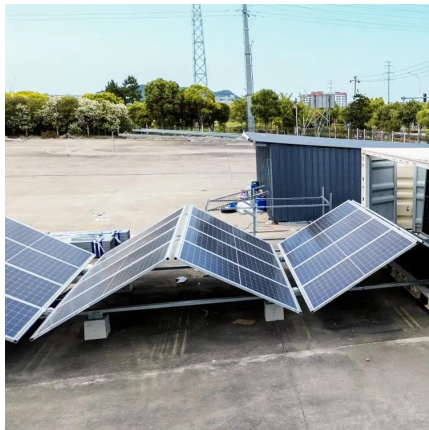
[Learn More](#)



[What is the Power Consumption of a 5G Base Station?](#)

Compared to its predecessor, 4G, the energy demand from 5G base stations has massively grown owing to new technical requirements needed to support higher data rates ...

[Learn More](#)



Contact Us

For catalog requests, pricing, or partnerships, please visit:
<https://fundacjawandea-imk.pl>

Scan QR Code for More Information



<https://fundacjawandea-imk.pl>