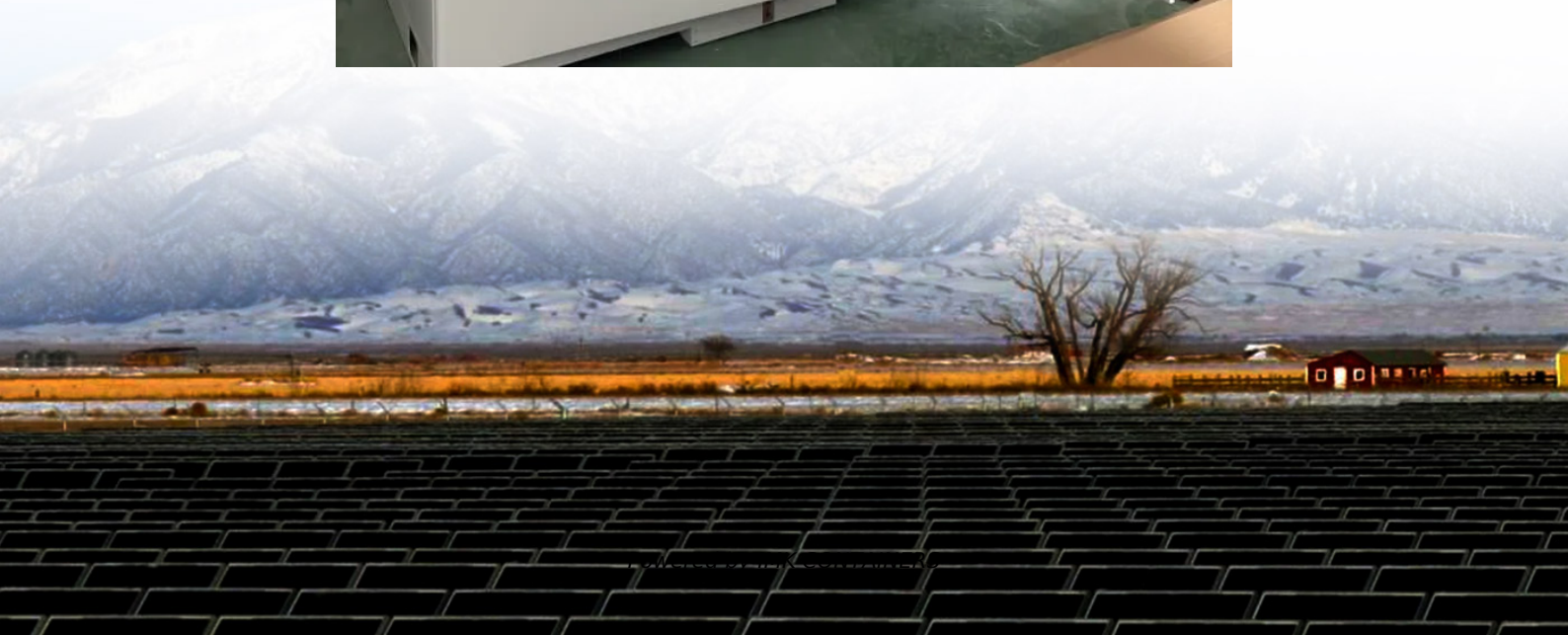


How many solar panels can an inverter support





Overview

How many volts can a solar inverter handle?

Each inverter comes with its specific ratings, including input voltage, output power, and the ability to manage several strings of solar panels. For instance, if your inverter supports a maximum input voltage of 600 volts and your solar panel system operates at a lower voltage, you are in safe territory.

How many solar panels can I use with an inverter?

To determine the minimum number of solar panels you can use with an inverter, take the inverter's minimum input voltage (aka start voltage) and divide by your solar panel's Open Circuit Voltage (Voc). For example, the SMA SB5.0-1 SP-US-41 Sunny Boy Inverter has a minimum input voltage of 100V in a 208V system or 125V in a 240V system.

Can a solar system have multiple inverters?

A: Yes, using multiple inverters is a common approach for larger solar panel systems. In this setup, the system can be designed with several inverters, allowing you to connect more panels overall. Each inverter can manage a specific number of panels, and this can enhance system performance and efficiency.

How many solar panels can a string inverter hold?

Most string inverters have 3 inputs that can hold 8 panels each for 24 in total. The specifications will vary so make sure to check the inverter before connecting any solar panel. Generally, an inverter can handle up to 30% more power than its rating. Given that solar panels do not always produce at peak power, this should not be an issue.



How many solar panels can an inverter support



[How many solar panels can I use with a particular inverter?](#)

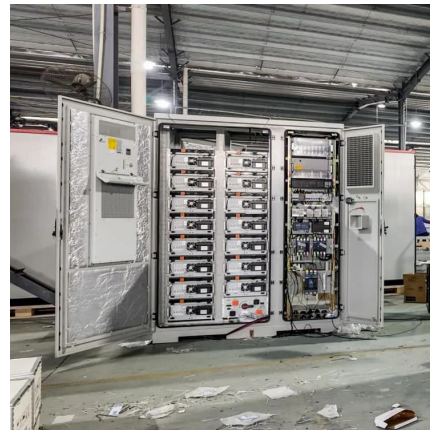
To determine the minimum number of solar panels you can use with an inverter, take the inverter's minimum input voltage (aka start voltage) and divide by your solar panel's Open ...

[Learn More](#)

[How Many Solar Panels Can Go On One Inverter?](#)

The maximum number of solar panels that can be connected to a single string inverter is $13 * 1000 = 13 \text{ kW}$ per MPPT. If the inverter is from a reliable model, it will limit the ...

[Learn More](#)



[How many panels can I connect to one inverter?](#)

Find out how many solar panels you can safely and efficiently connect to one inverter. Read our tips on optimal sizing for maximum yield.

[Learn More](#)



[How Many Solar Panels Can I Connect to My Inverter?](#)

A: Connecting too many solar panels to a single inverter can lead to overloading, which can damage the inverter and result in decreased efficiency. Overloading occurs when the total output of the solar panels ...



[Learn More](#)



[How many solar panels can I use with a ...](#)

To determine the minimum number of solar panels you can use with an inverter, take the inverter's minimum input voltage (aka start voltage) and divide by your solar panel's Open Circuit Voltage (Voc). For example, ...

[Learn More](#)



[How Many Solar Panels Can I Connect To My Inver...](#)

In the quest for harnessing sustainable and renewable energy sources, solar power stands out as a promising solution to meet our growing energy needs. As individuals ...

[Learn More](#)



[Is it Safe to Have Too Many Solar Panels on ...](#)

This article explores the critical aspects of matching solar panels with inverters, detailing the risks of overloading, the importance of correct sizing, and effective strategies for managing extra panels, such as ...

[Learn More](#)



[How Many Solar Panels Can Be Connected To Solar Inverter?](#)



Generally, when configuring solar panels for solar inverters, the sales can recommend solutions to you based on your needs, combined with comprehensive factors such ...

[Learn More](#)



[How Many Solar Panels Can I Connect to an Inverter? A ...](#)

Learn how to optimize your solar power system by understanding how many solar panels can be connected to an inverter. Explore inverter specifications, wiring configurations, ...

[Learn More](#)



[How Many Solar Panels Can One Inverter](#)

How to Calculate Solar Panel String Size Manually
Step 1: Determine Inverter Specifications-
Identify the voltage input range of the inverter and any safety margins required for optimal performance. Step 2: ...

[Learn More](#)



[How Many Solar Panels Can I Connect to My Inverter?](#)

An inverter can run on solar power, but the panels must be the right size. Take the proper approach and get your inverter running now.

[Learn More](#)

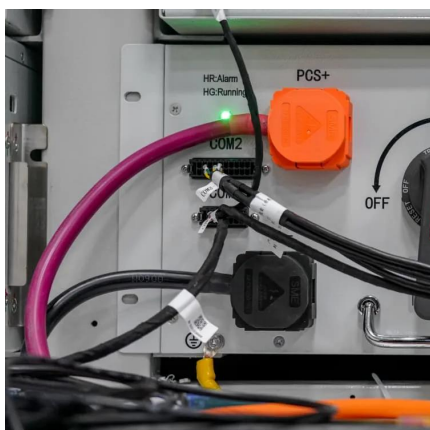


[How many solar panels can an inverter handle](#)



A: Connecting too many solar panels to a single inverter can lead to overloading, which can damage the inverter and result in decreased efficiency. Overloading occurs when ...

[Learn More](#)



[How Many Solar Panels Can One Inverter Handle?](#)

How to Calculate Solar Panel String Size Manually
Step 1: Determine Inverter Specifications-
Identify the voltage input range of the inverter
and any safety margins required ...

[Learn More](#)



[Is it Safe to Have Too Many Solar Panels on an Inverter?](#)

This article explores the critical aspects of matching solar panels with inverters, detailing the risks of overloading, the importance of correct sizing, and effective strategies for ...

[Learn More](#)



Contact Us

For catalog requests, pricing, or partnerships, please visit:
<https://fundacjawandea-imk.pl>



Scan QR Code for More Information



<https://fundacjawandea-imk.pl>