

How many series and parallels are there for a 60V20 solar container lithium battery pack





Overview

Can solar panels and batteries be connected in a series-parallel configuration?

Depending on the system requirements and design, solar panels and batteries can be connected in series, parallel, or a more complex series-parallel configuration to meet specific needs. In this tutorial, we will explain the basic wiring of photovoltaic panels in a series-parallel configuration.

Can a 12V solar panel be connected to a 6V or 24V?

A 12V solar panel should not be connected (in series, parallel or series parallel) to a 6V or 24V solar panel. Related Solar Panel Wiring & Installation Diagrams:.

Can a 12V solar panel be connected parallel?

Only the same rated solar panel can be connected in series, parallel or series parallel connection. A 12V solar panel can only be connected in (series, parallel or series-parallel) with another 12V solar panel. A 12V solar panel should not be connected (in series, parallel or series parallel) to a 6V or 24V solar panel.

How many solar panels are connected in a series?

A set of two solar panels connected in series Series Voltage: $V1 + V2 + Vn$
 $12V + 12V = 24V$. (Voltage is additive in series connection) Series Current: $I1 = I2 = In$
 $10A = 10A = 10Ah$. (Current is same in series connection). Now, we have two sets of series connected solar panels. If we connect these two set in parallel: Parallel Voltage:



How many series and parallels are there for a 60V20 solar container



[Cells Per Battery Calculator](#)

The Cells Per Battery Calculator is a tool used to calculate the number of cells needed to create a battery pack with a specific voltage and capacity. When designing a battery pack, cells can be connected in two ...

[Learn More](#)

[Cells Per Battery Calculator](#)

The Cells Per Battery Calculator is a tool used to calculate the number of cells needed to create a battery pack with a specific voltage and capacity. When designing a battery ...

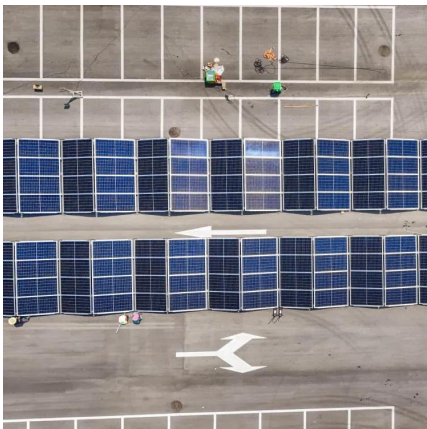
[Learn More](#)



[Solar Panel Series vs Parallel: Which is Better? _ Renogy US](#)

Discover the optimal choice between solar panel series vs parallel configurations. Learn how to maximize efficiency and output with our comprehensive guide on solar panel series vs parallel ...

[Learn More](#)

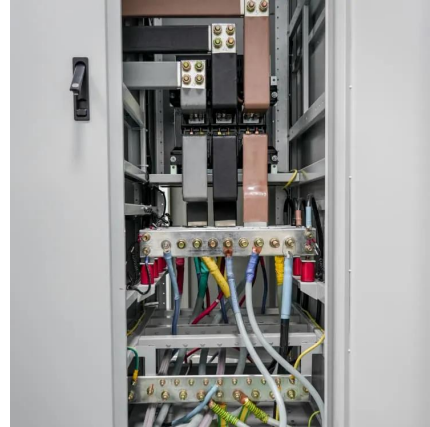


How to Calculate the Number of Lithium Batteries in Series ...

Lithium battery series and parallel: There are both parallel and series combinations in the middle of the battery pack, which increases the voltage and increases the capacity. Series voltage: ...



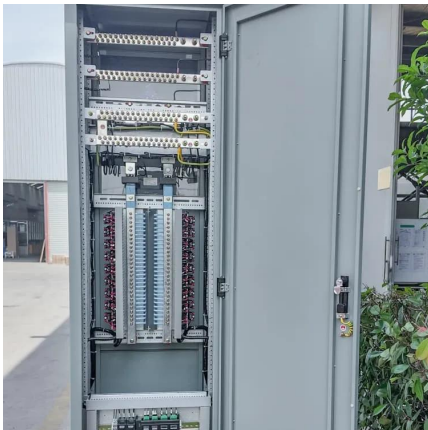
[Learn More](#)



[Solar Panel Series and Parallel Calculator](#)

Enter your solar panel's voltage (V_{mp}), current (I_{mp}), and the number of panels you're wiring together. Then hit Calculate to instantly see total voltage, current, and wattage for both series ...

[Learn More](#)



Figuring Out How Many Panels in Series And Parallel Based ...

Getting the most power output from your solar panels is key to maximizing their return on investment. Using a Maximum Power Point Tracker (MPPT) charge controller allows ...

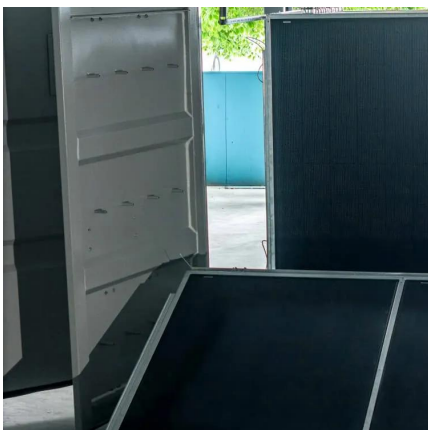
[Learn More](#)



[How to Wire Solar Panels in Series-Parallel ...](#)

The following solar panel and battery wiring diagram shows how to wire a four 12V Solar Panels in series-parallel connection to a 24V, 400Ah battery with an automatic inverter system.

[Learn More](#)





[Solar Panels Series and Parallel Calculator](#)

What is a Solar Panels Series and Parallel Calculator? Definition: This calculator determines the total voltage, current, and power output of solar panels connected in series and parallel ...

[Learn More](#)



[How to Calculate the Number of Lithium ...](#)

Lithium battery series and parallel: There are both parallel and series combinations in the middle of the battery pack, which increases the voltage and increases the capacity. Series voltage: 3.7V single battery can be ...

[Learn More](#)

[Strings, Parallel Cells, and Parallel Strings](#)

Strings, Parallel Cells, and Parallel Strings
Whenever possible, using a single string of lithium cells is usually the preferred configuration for a lithium ion battery pack as it is ...

[Learn More](#)



[Figuring Out How Many Panels in Series And ...](#)

Getting the most power output from your solar panels is key to maximizing their return on investment. Using a Maximum Power Point Tracker (MPPT) charge controller allows you to optimize the energy ...

[Learn More](#)



[Series vs Parallel Battery Configuration](#)

A BMS helps balance cells, protect against overcharge and over-discharge, and extend lifespan. Conclusion Using the Series vs Parallel Battery Configuration Calculator is the ...

[Learn More](#)



[Solar Panel Series vs Parallel: Which is Better?](#)

Discover the optimal choice between solar panel series vs parallel configurations. Learn how to maximize efficiency and output with our comprehensive guide on solar panel series vs parallel setups.

[Learn More](#)

[How to Wire Solar Panels in Series-Parallel Configuration?](#)

The following solar panel and battery wiring diagram shows how to wire a four 12V Solar Panels in series-parallel connection to a 24V, 400Ah battery with an automatic inverter ...

[Learn More](#)



Contact Us

For catalog requests, pricing, or partnerships, please visit:
<https://fundacjawandea-imk.pl>



Scan QR Code for More Information



<https://fundacjawandea-imk.pl>