

How long does it take to charge a 15W solar panel to 7Ah





Overview

How long does it take to charge a solar panel?

Using the formula of solar panel charging time calculator, $100\text{Ah}/25\text{A} = 4\text{h}$, it suggests that it takes 4 hours to completely charge a 12-volt 100Ah battery. Similarly, with a 24V 100Ah battery, it would require 8 hours of solar panel operation to achieve a full charge. Also Read: [How Long Do Solar Lights Take to Charge?](#)

.

How do I calculate battery charging times using solar panels?

Here are some examples to illustrate how to calculate charging times for various battery types using solar panels. **Lithium-Ion Battery:** This battery typically has a capacity of 100 amp-hours (Ah). With a 300-watt solar panel operating for 5 hours daily, your calculation is: Charging Time: $1200\text{ Wh} \div 1500\text{ Wh} = 0.8$ days or about 19.2 hours.

How long to charge a 12V battery with 300W solar panels?

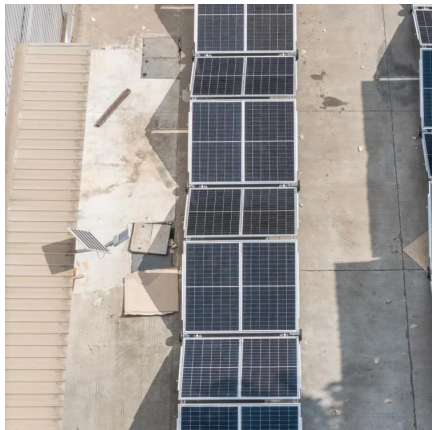
The duration to charge a 12V battery with 300W solar panels depends on the battery capacity and the solar panel current. For instance, at 6 peak hours and 25% system losses (efficiency is 75%), a single 300W solar panel can fully charge a 12V 50Ah battery in roughly 10 hours and 40 minutes. Let's understand it in detail.

How do solar panels affect battery charging time?

Solar panel output and efficiency play crucial roles in battery charging time. Output, measured in watts, indicates how much power the panel generates. Higher wattage panels charge batteries faster. For instance, a 300W solar panel can charge a battery more quickly than a 100W panel under similar sunlight conditions.



How long does it take to charge a 15W solar panel to 7Ah



[Solar Panel Charging Time Calculator](#)

Easily find out how long your solar panels take to charge any battery. Use our free solar panel charging time calculator for fast and accurate results.

[Learn More](#)

[Solar Battery Charge Time Calculator](#)

The Solar Battery Charge Time Calculator determines the time required to fully charge a solar battery based on various input parameters. Its primary use is to assist in optimizing solar energy ...

[Learn More](#)



[Solar Battery Charge Time Calculator \(12v, 24v, 48v\)](#)

Use our solar battery charge time calculator to find out how long it will take to recharge your battery using solar panels.

[Learn More](#)



[Solar Panel Charge Time Calculator](#)

Nowadays, solar energy system has become an indispensable power generation equipment for many families, therefore, an in-depth understanding of how to calculate how long it takes to charge a solar ...



[Learn More](#)



[Solar Battery Charge Time Calculator \(12v, 24v, 48v\)](#)

Wondering how long your solar panel will take to charge a battery? You're not alone. Whether you're powering up a home system or a weekend camper, knowing the math behind charging time saves you ...

[Learn More](#)



Solar Panel Charge Time Calculator: Accurately Estimate How Long ...

A solar charger calculator is especially useful when calculating how long it will take to charge different battery sizes with varying solar panel outputs. Through a charge time ...

[Learn More](#)



[Solar Panel Charge Time Calculator](#)

Calculate how long it will take your solar panels to charge your battery bank with our free solar panel charge time calculator.

[Learn More](#)





[How to Calculate Charging Time of Battery by Solar Panel](#)

Wondering how long your solar panel will take to charge a battery? You're not alone. Whether you're powering up a home system or a weekend camper, knowing the math ...

[Learn More](#)



[Solar Panel Charge Time Calculator: ...](#)

A solar charger calculator is especially useful when calculating how long it will take to charge different battery sizes with varying solar panel outputs. Through a charge time calculator, users looking up how to ...

[Learn More](#)

[Solar Battery Charge Time Calculator](#)

The Solar Battery Charge Time Calculator determines the time required to fully charge a solar battery based on various input parameters. Its primary use is to assist in ...

[Learn More](#)



[Solar Panel Charging Calculations of a Battery ...](#)

Depending on the charging controller, the predicted time may change. It takes 3.1 hours to charge a PWM charge controller. Using an MPPT charge controller, on the other hand, will take 2.9 hours to finish. ...

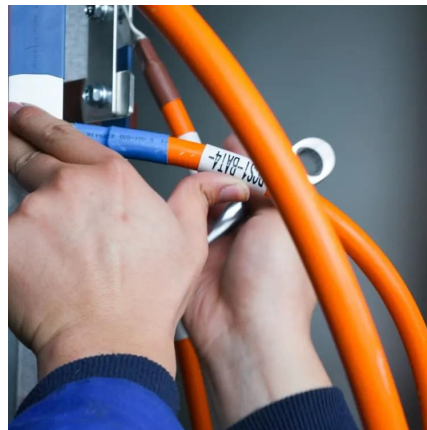
[Learn More](#)



[Solar Panel Charging Time Calculator](#)

Therefore, the required number of hours = $600 / 56.25 = 10$ hours and 40 minutes. How Long Will a 100W Solar Panel Charge a Battery? Just like previously discussed, the ...

[Learn More](#)



[Solar Panel Charging Calculations of a Battery \(Calculated\)](#)

Depending on the charging controller, the predicted time may change. It takes 3.1 hours to charge a PWM charge controller. Using an MPPT charge controller, on the other ...

[Learn More](#)



[Solar Panel Charge Time Calculator](#)

Nowadays, solar energy system has become an indispensable power generation equipment for many families, therefore, an in-depth understanding of how to calculate how ...

[Learn More](#)



How Long to Charge a Battery with Solar Panel Calculator: ...

Discover how long it takes to charge a battery with solar panels using our comprehensive guide. Learn to utilize a solar panel calculator to optimize your charging times ...

[Learn More](#)





Contact Us

For catalog requests, pricing, or partnerships, please visit:
<https://fundacjawandea-imk.pl>

Scan QR Code for More Information



<https://fundacjawandea-imk.pl>