

# How big of an inverter can 24v100a drive





## Overview

---

Can a 100Ah battery be a 24V inverter?

Most 100Ah batteries are 12V, but some systems may use 24V. Your inverter must match your battery voltage (e.g., 12V inverter for a 12V battery). 2. Power Rating of the Inverter (Wattage) Inverters are rated by their continuous power output in watts (W). The right inverter size depends on how much power your appliances draw.

Can I use a 2000 watt inverter with a 100 watt battery?

Yes, you can use a 2000 watt inverter with a 100ah battery. But if you use 2000 watts from your 12v 100ah battery, it will use up the battery faster and over time, it will also shorten the battery's life. Can I use a 1500W inverter with a 100Ah battery?

Yes, you can use a 1500 watt inverter with a 100ah battery.

How many watts can a 12V inverter run?

Power Rating of the Inverter (Wattage) Inverters are rated by their continuous power output in watts (W). The right inverter size depends on how much power your appliances draw. Here are some general guidelines: A 12V 100Ah battery can reasonably power an inverter up to 1000W-1200W for short periods.

Do I need an inverter size chart?

The need for an inverter size chart first became apparent when researching our DIY solar generator build. Solar generators range in size from small generators for short camping trips to large off-grid power systems for a boat or house. Consequently, inverter sizes vary greatly.



## How big of an inverter can 24v100a drive

---



### [What Inverter Size is Best for a 100Ah Battery?](#)

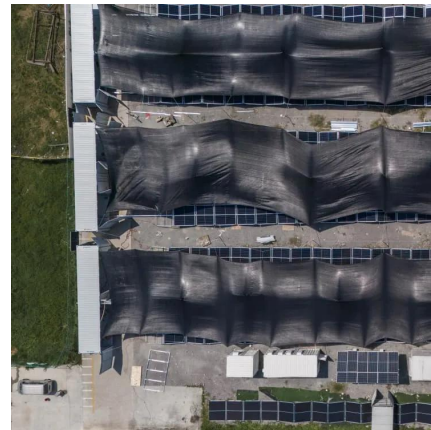
A 12V 100Ah battery can reasonably power an inverter up to 1000W-1200W for short periods. For continuous loads, 500W-800W is more efficient and battery-friendly.

[Learn More](#)

### [Sizing the Right Inverter for 100ah Battery](#)

In this guide, I will walk you through the process of sizing the right inverter for a 100ah battery along with an inverter size chart.

[Learn More](#)



### [How big of an inverter can 24v100a drive](#)

What size inverter for a 100Ah battery? In general, for a 100ah battery, a 1000 watt pure sine wave inverter will be a good suit. It provides enough power to operate a wide range of ...

[Learn More](#)



### [How to Determine What Size Inverter You Can Run Off a ...](#)

Determining the appropriate size of an inverter that can be run off a 100Ah battery involves understanding both the power output of the inverter and the energy capacity of the battery.



A ...

[Learn More](#)



### [What Size Inverter Do I Need for a 100Ah Battery?](#)

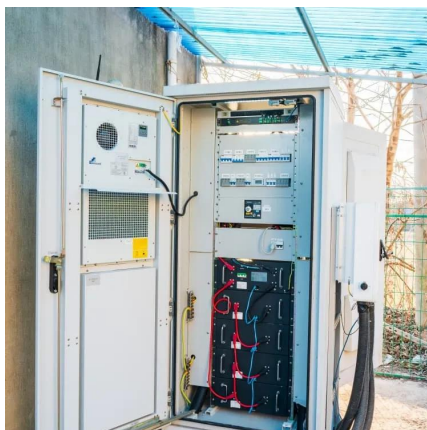
A 100Ah battery typically supports an inverter size up to about 1000 watts for standard applications, balancing efficient runtime and battery health. Selecting the right ...

[Learn More](#)

### [Sizing the Right Inverter for 100ah Battery](#)

In this guide, I will walk you through the process of sizing the right inverter for a 100ah battery along with an inverter size chart.

[Learn More](#)



### [The Only Inverter Size Chart You'll Ever Need](#)

A 100Ah battery can support a 1000W inverter for roughly one hour. Avoid using a 2000W inverter with a single 100Ah battery, as it may overdraw. For higher power ...

[Learn More](#)





## [The Only Inverter Size Chart You'll Ever Need](#)

We created a comprehensive inverter size chart to help you select the correct inverter to power your appliances. The need for an inverter size chart first became apparent ...

[Learn More](#)



## [Inverter Size Calculator , Find Your Perfect Power Match](#)

Inverters add load to the electrical system, even with no connected appliances. The larger the inverter, the greater the base load. So, it's a complete waste to install an ...

[Learn More](#)

## **What Size Inverter Can I Run Off A 100Ah Battery? Maximize ...**

A 100Ah battery can support a 1000W inverter for roughly one hour. Avoid using a 2000W inverter with a single 100Ah battery, as it may overdraw. For higher power ...

[Learn More](#)



## [What Size Inverter Can I Run Off a 100Ah Battery? A ...](#)

This capacity influences how long an inverter can run appliances before needing a recharge. However, battery capacity alone doesn't dictate inverter size. The inverter converts ...

[Learn More](#)



### What size inverter can I run off a 100Ah lithium battery?

A 100Ah lithium battery can typically support an inverter up to 1,200W for 1 hour, assuming a 12V system. Actual runtime depends on load wattage and battery voltage. For example, a 600W ...

[Learn More](#)



## Contact Us

---

For catalog requests, pricing, or partnerships, please visit:  
<https://fundacjawandea-imk.pl>

### Scan QR Code for More Information



<https://fundacjawandea-imk.pl>