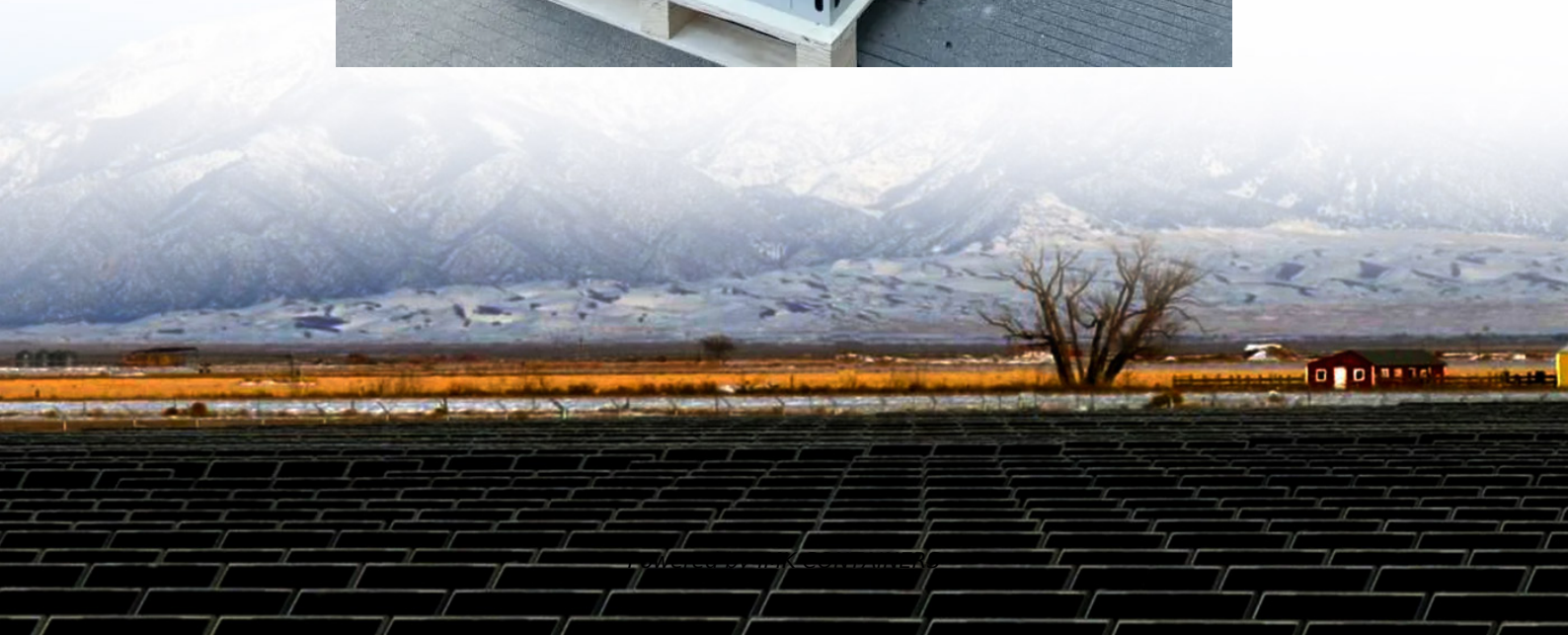


How big is the area of solar panels per watt





Overview

What are the sizes of solar panels?

The size of solar panels varies, with no definite answer. Their wattages also differ as each system operates on different power levels. To learn more about solar panel sizes and wattage, keep reading.

How much wattage does a solar panel take?

Solar panel sizes and wattage range from 250W to 450W, taking up 1.6 to 2 square metres per panel. One of the most important things to consider when getting solar panels for your home is the specific solar panel size and dimensions.

How many kW is a solar system?

Location: Assume an average of 4 peak sun hours per day. Required System Size: $10,800 \text{ kWh} / (4 \text{ hours/day} \times 365 \text{ days/year}) = 7.4 \text{ kW}$ system. Choose Panel Wattage: Solar panels typically range from 250W to 400W. Determine Number of Panels: Divide the system size by the wattage of the chosen panels. Panel Wattage: 350W per panel.

How much surface area do solar panels need?

The required surface area depends on the number of panels, their wattage, and physical dimensions. Roof orientation, shading, and available space also play significant roles. How do I assess my roof's suitability for solar panels?



How big is the area of solar panels per watt



Photovoltaics

Photovoltaics - Calculate Power and Surface Area Calculator for the power per area or area per power of a photovoltaic system and of solar modules. You can enter the size of the modules and click from top to bottom, or ...

[Learn More](#)

[Total Area Required for Solar Panel ...](#)

Calculate the total area needed for your solar panel installation quickly and accurately with our easy-to-use solar panel area calculator.

[Learn More](#)



[How Big Is the Average Solar Panel?](#)

In this guide, we'll discuss standard Hanwha solar panel dimensions, the factors that affect size, and how to calculate the number of panels you'll need. How Big Is the Average Solar Panel? The average ...

[Learn More](#)

[Solar Panel Sizes and Wattage Explained](#)

Additionally, you can compare pricing, brands and options by viewing solar kit sizes. Remember that you decide how many solar panels to install based on your demands, space and budget. Ultimately, for ...



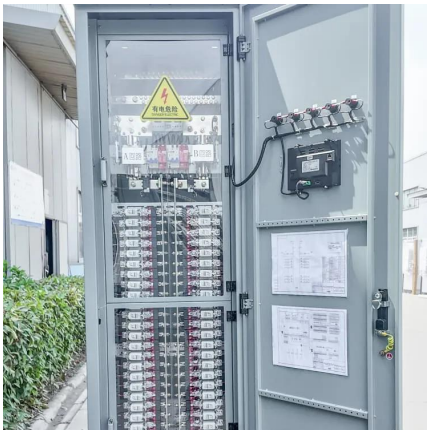
[Learn More](#)



[Solar Panel Sizes and Wattage Explained](#)

Additionally, you can compare pricing, brands and options by viewing solar kit sizes. Remember that you decide how many solar panels to install based on your demands, ...

[Learn More](#)



[How to calculate the surface area required by solar panels](#)

This guide will walk you through the factors influencing solar panel sizing, including energy consumption, panel wattage, roof orientation, and shading. By the end of this ...

[Learn More](#)



Photovoltaics

Photovoltaics - Calculate Power and Surface Area Calculator for the power per area or area per power of a photovoltaic system and of solar modules. You can enter the size of the modules ...

[Learn More](#)





[Standard Solar Panel Sizes And Wattages \(100W-500W ...](#)

Can you put a 5kW solar system on your roof? For that, you will need to know what size is a typical 100-watt solar panel, right? To bridge that gap of very useful knowledge ...

[Learn More](#)



[How Do You Calculate The Surface Area Of A Solar Panel?](#)

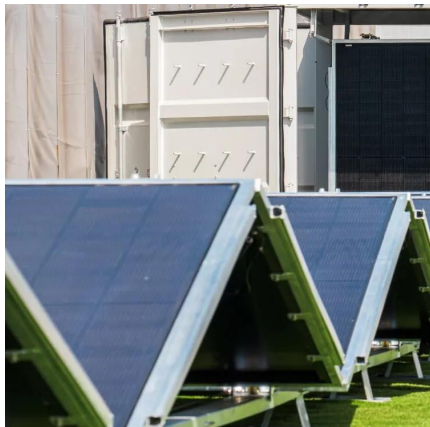
What is the area of a 250 watt solar panel? For the purpose of calculating estimated space needed, we assumed that 250W solar panels are, on average, 16.5 square ...

[Learn More](#)

[How Big Is the Average Solar Panel? Dimensions & Size Guide](#)

In this guide, we'll discuss standard Hanwha solar panel dimensions, the factors that affect size, and how to calculate the number of panels you'll need. How Big Is the Average ...

[Learn More](#)



[Guide to Solar Panel Sizes & Dimensions \(October 2025\)](#)

Solar panel size refers to the total amount of power a solar panel can generate over a period of time Solar panel dimensions refers to the physical size of a solar panel Solar ...

[Learn More](#)



[What is the Area of a 1 kW Solar Panel?](#)

For example, if we have a 1 kW solar panel with an efficiency rate of 20%, this means that the panel will produce 200 watts of electricity per square meter (1000 watts x 20% ...

[Learn More](#)



[How much area does each solar photovoltaic ...](#)

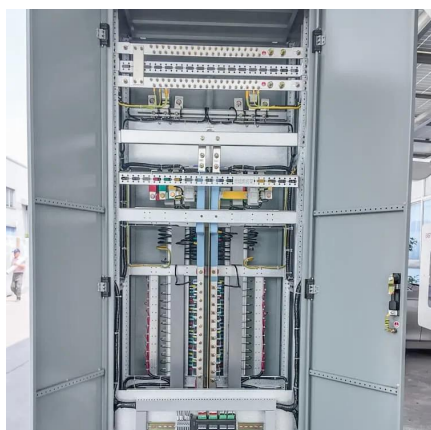
To determine the area covered by each solar photovoltaic panel, several factors come into play, including the type of panel, the manufacturer, and its specific capacity. 1. Standard solar panels typically ...

[Learn More](#)

[Standard Solar Panel Sizes And Wattages ...](#)

Can you put a 5kW solar system on your roof? For that, you will need to know what size is a typical 100-watt solar panel, right? To bridge that gap of very useful knowledge needed, we have compared and averaged ...

[Learn More](#)



[How much area does each solar photovoltaic panel have?](#)

To determine the area covered by each solar photovoltaic panel, several factors come into play, including the type of panel, the manufacturer, and its specific capacity. 1. ...

[Learn More](#)



[Total Area Required for Solar Panel Installation Calculator](#)

Calculate the total area needed for your solar panel installation quickly and accurately with our easy-to-use solar panel area calculator.

[Learn More](#)



Contact Us

For catalog requests, pricing, or partnerships, please visit:
<https://fundacjawandea-imk.pl>

Scan QR Code for More Information



<https://fundacjawandea-imk.pl>