

How big a battery should I use for a 24v inverter





How big a battery should I use for a 24v inverter



How to Calculate the Right Battery Size for Your Inverter ...

Calculating the correct battery size ensures that your inverter system can meet your power needs without leaving you in the dark during outages. An undersized battery may not provide enough

...

[Learn More](#)

[Frequently asked questions about inverters , Mastervolt](#)

Frequently Asked Questions about Inverters How much battery capacity do I need with an inverter? As a rule of thumb, the minimum required battery capacity for a 12-volt system is

...

[Learn More](#)



Inverter Sizing: Can Your Inverter Be Too Big For Your Battery ...

An inverter can indeed be too big for your battery bank. An oversized inverter might waste energy and raise operating costs. To prevent this, ensure the inverter size matches your

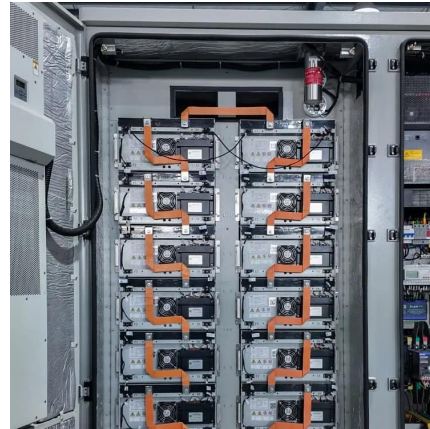
[Learn More](#)



[Battery to Inverter Calculator](#)

Calculate the optimal battery size for your inverter with our battery to inverter calculator; find out the required battery capacity for your inverter with our battery power

[Learn More](#)



[Solar Inverter & Battery Sizing Calculator](#)

Choosing the correct inverter and battery size is crucial for every microgrid system. Our Solar Inverter and Battery Sizing Calculator provides a simple and user-friendly solution.

[Learn More](#)



[Can an Inverter Be Too Big for Your Battery System?](#)

Always check the battery's max discharge rate (C-rate) to avoid exceeding safe limits. When sizing for 24V or 48V systems, recalculate using the higher voltage. A 48V 100Ah lithium ...

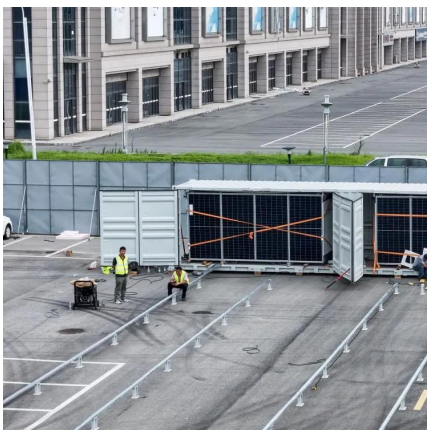
[Learn More](#)



[What Size Lithium Battery Is Needed for a 2000W Inverter](#)

Short A 2000W inverter typically requires a 200Ah lithium battery (24V) or 100Ah (48V) for 1 hour of runtime. For longer use, multiply by desired hours. Prioritize voltage compatibility, depth of ...

[Learn More](#)

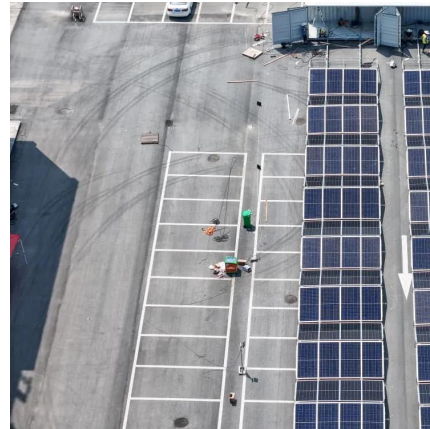


[Calculate Battery Size For Any Size Inverter \(Using Our ...](#)



So I have made it easy for you, use the calculator below to calculate the battery size for 200 watt, 300 watt, 500 watt, 1000 watt, 2000 watt, 3000 watt, 5000-watt inverter

[Learn More](#)



How to Calculate the Right Inverter Battery Capacity for Your ...

Learn how to calculate the right inverter battery capacity for your needs with a simple formula. Understand power requirements, efficiency losses, and the best battery types ...

[Learn More](#)

[Calculate Battery Size for Inverter Calculator](#)

The Calculate Battery Size for Inverter Calculator helps you determine the optimal battery capacity needed to support your inverter system. By inputting critical parameters such ...

[Learn More](#)



Contact Us

For catalog requests, pricing, or partnerships, please visit:
<https://fundacjawandea-imk.pl>



Scan QR Code for More Information



<https://fundacja-wandea-imk.pl>