

How big a battery does a 2000 inverter need





Overview

What size battery does a 2000W inverter need?

Generally, for a 2000W inverter, a battery capacity of at least 100Ah is recommended, but actual requirements may vary based on usage and efficiency factors. This article provides detailed calculations and considerations for selecting the right battery size. What Is a 2000W Inverter?

How Do Batteries Work with Inverters?

.

Can a 2000W inverter run a 100Ah battery?

To run a 2000W inverter, you need to consider the appropriate battery size to ensure optimal performance and efficiency. Generally, for a 2000W inverter, a battery capacity of at least 100Ah is recommended, but actual requirements may vary based on usage and efficiency factors.

Does a 12V inverter work with a 2000W battery?

A: 12V systems work for 1000W, but 2000W inverters often use 24V or 48V to reduce current draw (and cable size). Leaptrend offers both 12V and 24V options. Q: How do I connect multiple batteries?

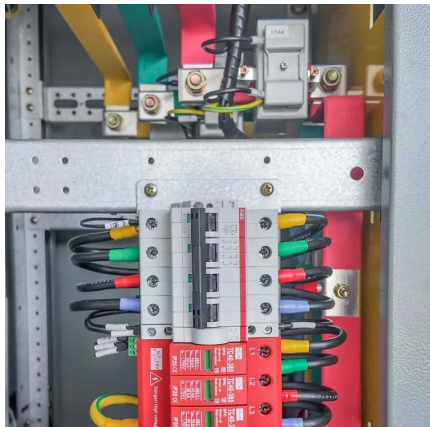
A: Parallel connections (same voltage, higher Ah) are best for more capacity. Series connections (higher voltage) are used for 24V/48V systems.

Can a 24v battery run a 2,000w inverter?

Now that you know you should use a 24V battery to run a 2,000W inverter, we can look at the capacity and the C-rate. The capacity of the battery is indicated in amp hours or simply Ah. The most common battery will be 12V and 100Ah. The battery capacity ties in directly with the C-rate of the battery.



How big a battery does a 2000 inverter need



[How Many Batteries Do You Need for a 2000 ...](#)

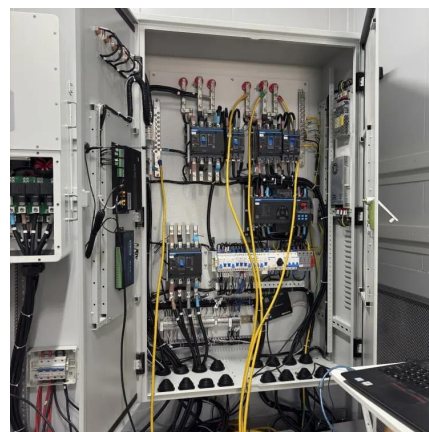
How many batteries do you need for your 2000-watt inverter? Learn about voltage compatibility, runtime, and cost comparisons of batteries.

[Learn More](#)

[How many batteries do I need to run a 2000 watt inverter](#)

Most people underestimate the number of batteries required to efficiently power a 2000-watt inverter. Understanding the relationship between inverter watts,

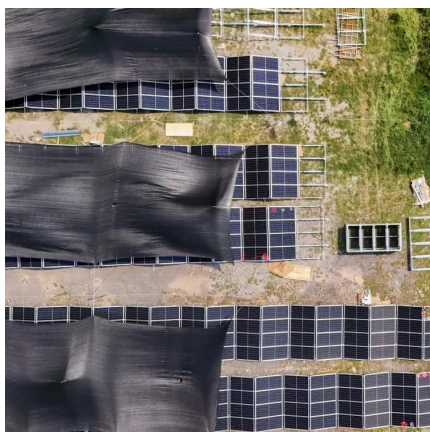
[Learn More](#)



[How Many Batteries for a 2000 watt Inverter? + Diagrams](#)

Do you need to know how many batteries you need for a 2,000W inverter? Read this article for calculations and diagrams of different battery configurations.

[Learn More](#)



[What Size Battery Do I Need to Run a 2000W Inverter?](#)

To run a 2000W inverter, you need to consider the appropriate battery size to ensure optimal performance and efficiency. Generally, for a 2000W inverter, a battery capacity of at least ...



[Learn More](#)



[How Many Batteries Do I Need for a 1000W ...](#)

Q: Do I need a 24V battery bank for a 2000W inverter? A: 12V systems work for 1000W, but 2000W inverters often use 24V or 48V to reduce current draw (and cable size).

[Learn More](#)



[Calculate Battery Size for Inverter Calculator](#)

The Calculate Battery Size for Inverter Calculator helps you determine the optimal battery capacity needed to support your inverter system. By inputting critical parameters such ...

[Learn More](#)



[How Many Batteries Do You Need for a 2000 Watt Inverter?](#)

How many batteries do you need for your 2000-watt inverter? Learn about voltage compatibility, runtime, and cost comparisons of batteries.

[Learn More](#)



[How Big of a Battery Do I Need for a 2000 ...](#)

When selecting the appropriate battery for a 2000 watt inverter, understanding your power requirements is crucial. This detailed guide will help you determine the optimal battery size to ensure efficient ...

[Learn More](#)



[2000 Watt Power Inverter: Applications, Battery ...](#)

Discover how a 2000 watt power inverter powers appliances, tools, and RV gear. Learn battery setup, usage tips, and why it's ideal for off-grid living.

[Learn More](#)



[How Many Batteries Do You Need For a 2000W Inverter?](#)

2000W inverters depend on batteries for power, so using the right size is essential. Get insights on how many batteries you will need.

[Learn More](#)



[How Big of a Battery Do I Need for a 2000 Watt Inverter?](#)

When selecting the appropriate battery for a 2000 watt inverter, understanding your power requirements is crucial. This detailed guide will help you determine the optimal ...

[Learn More](#)





How Many Batteries Do I Need for a 1000W or 2000W Power Inverter?

Q: Do I need a 24V battery bank for a 2000W inverter? A: 12V systems work for 1000W, but 2000W inverters often use 24V or 48V to reduce current draw (and cable size).

[Learn More](#)



[Calculate Battery Size for Inverter Calculator](#)

The Calculate Battery Size for Inverter Calculator helps you determine the optimal battery capacity needed to support your inverter system. By inputting critical parameters such as power consumption, ...

[Learn More](#)

[How many batteries do I need to run a 2000 ...](#)

Most people underestimate the number of batteries required to efficiently power a 2000-watt inverter. Understanding the relationship between inverter watts,

[Learn More](#)



[How Big of a Battery Do I Need to Run a 2000W Inverter?](#)

To run a 2000W inverter, you typically need a battery with at least 200Ah capacity if you plan to run it for one hour. This calculation assumes a 100% efficiency rate, but in ...

[Learn More](#)



Contact Us

For catalog requests, pricing, or partnerships, please visit:
<https://fundacjawandea-imk.pl>

Scan QR Code for More Information



<https://fundacjawandea-imk.pl>