

Germany Hamburg outdoor power system





Overview

How can the port of Hamburg meet its energy needs?

Once vessels connect to the shore power system, they can meet their substantial energy needs entirely with green energy from the public grid. Our strategic vision for shore power in the Port of Hamburg aims to equip all major berths with the necessary infrastructure by 2030, achieving complete coverage by 2040, with support from federal funding.

Where does the energy in Hamburg come from?

The energy provided is sourced from renewable resources. Port of Hamburg: A Pioneer in Maritime Decarbonization The first shore power system in the Port of Hamburg launched in 2016 at Cruise Terminal Altona and has been supplying numerous cruise ships ever since.

What is the strategic vision for shore power in the port of Hamburg?

Our strategic vision for shore power in the Port of Hamburg aims to equip all major berths with the necessary infrastructure by 2030, achieving complete coverage by 2040, with support from federal funding. vehicle operating along a 180 m cable chain. boxes available should two smaller vessels be services.

Will Hamburg's shore power facilities be fully operational by 2030?

By commencing the expansion of shore power at an early stage, Hamburg is strategically positioned to comply with the Europe-wide FuelEU Maritime directive, which mandates the utilization of shore power by 2030. This forward-thinking strategy guarantees that the shore power facilities will be fully operational by the year 2030.



Germany Hamburg outdoor power system



[Outdoor power supply transformation in Hamburg Germany](#)

The Port of Hamburg already produces its own energy and will be able to expand this in future. In addition, importing energy sources is fundamental to Germany's supply ...

[Learn More](#)

[Actemium's First Onshore Power Supply Project in Germany](#)

Actemium Hamburg will be responsible for installing a medium-voltage system in an elevated container, which will supply a 4MVA transformer and a low-voltage system on the ...

[Learn More](#)



Mobile socket enables efficient shore power supply at the Port of Hamburg

At Container Terminal Hamburg (CTH), three mobile shore power connections have been installed on the quays to ensure a flexible, fast and safe power connection for container ships. ...

[Learn More](#)



Company

SOLARA is the strong brand for solar technology (photovoltaic) from northern Germany for over 20 years. As a specialist provider of stand-alone systems (e.g. mobile solar systems for ...

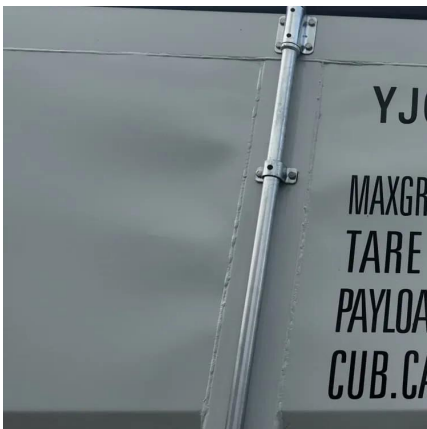
[Learn More](#)



Press Release: Hamburg Port Office Area Adopts WANGA Backup Power

1. Criticality of Power Assurance for Port Offices Located on the right bank of the Lower Elbe River, Hamburg Port handles nearly 30% of Germany's maritime cargo volume. Its ...

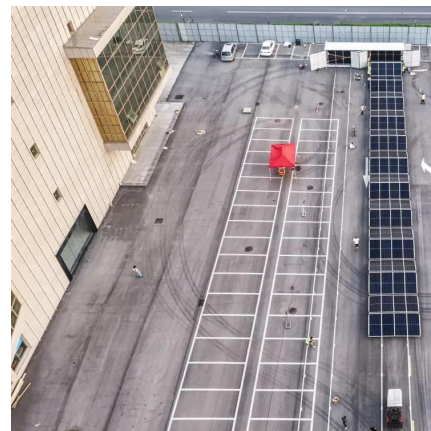
[Learn More](#)



Hamburg (Germany) emerges as EU's trailblazer in shore power ...

Hamburg's shore power systems deliver electricity at 10 kV voltage and with capacities ranging from 12 to 16 MVA depending on the terminal. These systems are ...

[Learn More](#)



Expansion of onshore power proceeding in Port of Hamburg

Onshore power plant for container ships - new cruise terminal "We are sending a clear signal for more environmental protection by expanding the onshore power supply in the ...

[Learn More](#)



Outdoor Power Protection Boards in Hamburg Essential...



SunContainer Innovations - Ever wondered how Hamburg's bustling port facilities and outdoor events maintain uninterrupted power supply despite harsh weather? The secret lies in ...

[Learn More](#)



[Shore-side power supply for container ships ...](#)

The Hamburg Port Authority is currently concluding contractual agreements on the use and conditions with the shipping companies entitled to use the shore-side power, building on existing ...

[Learn More](#)



Shore-side power supply for container ships in the Port of Hamburg

The Hamburg Port Authority is currently concluding contractual agreements on the use and conditions with the shipping companies entitled to use the shore-side power, building ...

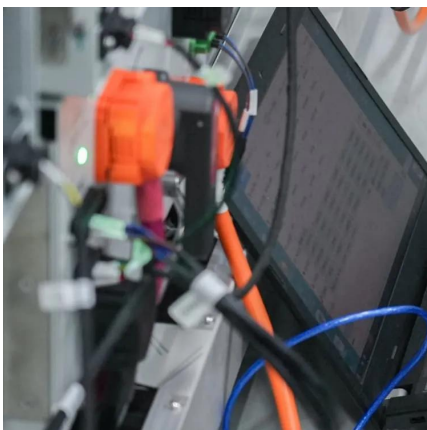
[Learn More](#)



[Actemium's First Onshore Power Supply ...](#)

Actemium Hamburg will be responsible for installing a medium-voltage system in an elevated container, which will supply a 4MVA transformer and a low-voltage system on the east pontoon. This ...

[Learn More](#)

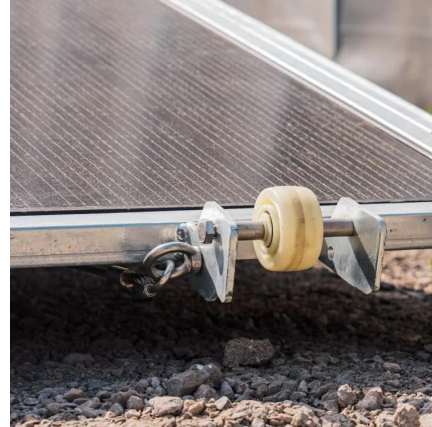


Shore power



Once vessels connect to the shore power system, they can meet their substantial energy needs entirely with green energy from the public grid. Our strategic vision for shore power in the Port ...

[Learn More](#)



Contact Us

For catalog requests, pricing, or partnerships, please visit:
<https://fundacjawandea-imk.pl>

Scan QR Code for More Information



<https://fundacjawandea-imk.pl>