

Generator room substation





Overview

Where should a generator room be located in a basement?

When the basement is more than 3 floors, it is best to set it at the lowest layer, close to the substation. The generator room shall be arranged on the exterior wall of the building, and measures such as ventilation, moisture-proof, smoke exhaust, noise and vibration reduction shall be taken to meet the requirements of environmental protection. 2.

How to design a two-floor substation?

In a two-floor substation arrangement, the transformer should be on the bottom level & the power distribution room on second floor must contain lifting holes and a platform. When designing a substation, the control room, duty room, & auxiliary room must be easily accessible to operational staff.

How to design a substation?

When designing substations, there should be enough spare switch cabinet (panel) positions in high and low voltage power distribution rooms, and the transformer outline should be one level greater than its capacity. In an interior substation, each 3-phase transformer with one hundred kilos or more oil capacity should have its own transformer room.

Where should a substation and switch room be located?

The location and other requirements of a substation and switch rooms shall be as given below. Availability of power lines nearby may be kept in view while deciding the location of the substation. The substation should preferably be located in a separate utility building and may be adjacent to the generator room, if any.



Generator room substation



[Generator Room Design Requirements . Thompson Machinery](#)

Looking to design a compliant generator room? Discover sizing, layout and access requirements, and planning strategies to meet NFPA and OSHA standards.

[Learn More](#)

Generator Room

AutoCAD DWG file available for free download that offers a comprehensive design of a generator room, including both plan and elevation 2D views. Also known as a power supply room or backup generator space, this design is ...

[Learn More](#)



[Diesel Generator Room Design Standard Supplier](#)

1. The diesel generator room should be preferably configured on the top floor and basement of the building. When the basement is more than 3 floors, it is best to set it at the ...

[Learn More](#)

Generator Room Design: Safety, Efficiency, and Functionality ...

A comprehensive guide to generator room design, focusing on safety, efficiency, layout, and best practices. Learn key tips for creating an optimal generator room.



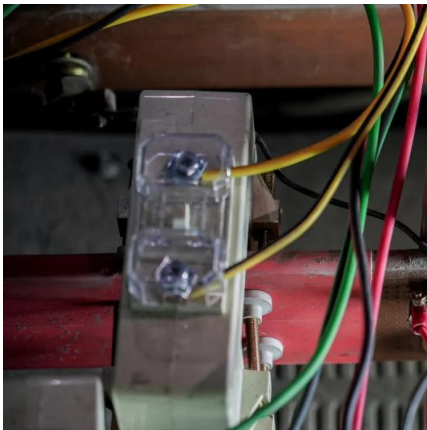
[Learn More](#)



[Generator Room Requirements: NFPA 110 & NEC Code](#)

Learn generator room requirements for NFPA 110 and NEC compliance. This guide covers ventilation, clearance, fire safety, and installation codes for commercial

[Learn More](#)



[Modern practice for LV/MV substation and ...](#)

Modern Practice for Buildings In the present era, the presence of reliable and uninterrupted electricity is commonly assumed in the majority of nations. Nevertheless, in many nations, this is susceptible to frequent ...

[Learn More](#)



Generator Room

AutoCAD DWG file available for free download that offers a comprehensive design of a generator room, including both plan and elevation 2D views. Also known as a power supply room or ...

[Learn More](#)

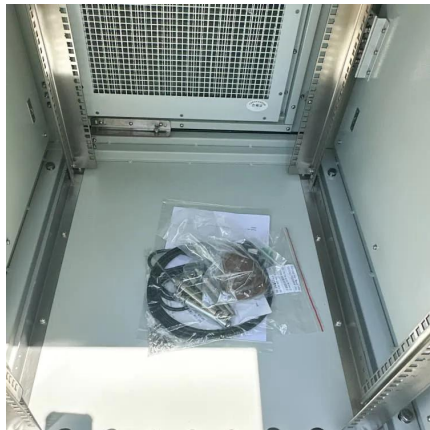




[Generator Room Requirements: NFPA 110](#)

Learn generator room requirements for NFPA 110 and NEC compliance. This guide covers ventilation, clearance, fire safety, and installation codes for commercial

[Learn More](#)



[GUIDELINES FOR SUBSTATION AND SWITCHROOM](#)

Looking to design a compliant generator room? Discover sizing, layout and access requirements, and planning strategies to meet NFPA and OSHA standards.

[Learn More](#)

[GUIDELINES FOR SUBSTATION AND SWITCHROOM](#)

The substation should preferably be located in a separate utility building and may be adjacent to the generator room, if any. Location of substation in the basement should be avoided, as far ...

[Learn More](#)



[Modern practice for LV/MV substation and power ...](#)

Modern Practice for Buildings In the present era, the presence of reliable and uninterrupted electricity is commonly assumed in the majority of nations. Nevertheless, in ...

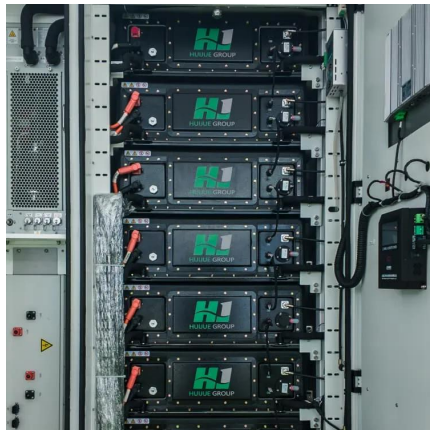
[Learn More](#)



[Substation Layout Design](#)

Explore the essential elements of substation layout design, such as equipment placement, safety clearances, and recommended procedures for dependable system operation and effective power flow.

[Learn More](#)



[Generator Room Setup Guide](#)

Generator Room Setup Guide for safety and flow--see where to place fuel, transfer switches, and breaker tie-ins.

[Learn More](#)

[Design and Layout Requirements for Diesel ...](#)

Learn key design considerations for a diesel generator room, including space planning, ventilation, exhaust systems, vibration isolation and safety measures.

[Learn More](#)



[Design and Layout Requirements for Diesel Generator Room](#)

Learn key design considerations for a diesel generator room, including space planning, ventilation, exhaust systems, vibration isolation and safety measures.

[Learn More](#)



[Substation Layout Design](#)

Explore the essential elements of substation layout design, such as equipment placement, safety clearances, and recommended procedures for dependable system ...

[Learn More](#)



Contact Us

For catalog requests, pricing, or partnerships, please visit:
<https://fundacjawandea-imk.pl>

Scan QR Code for More Information



<https://fundacjawandea-imk.pl>