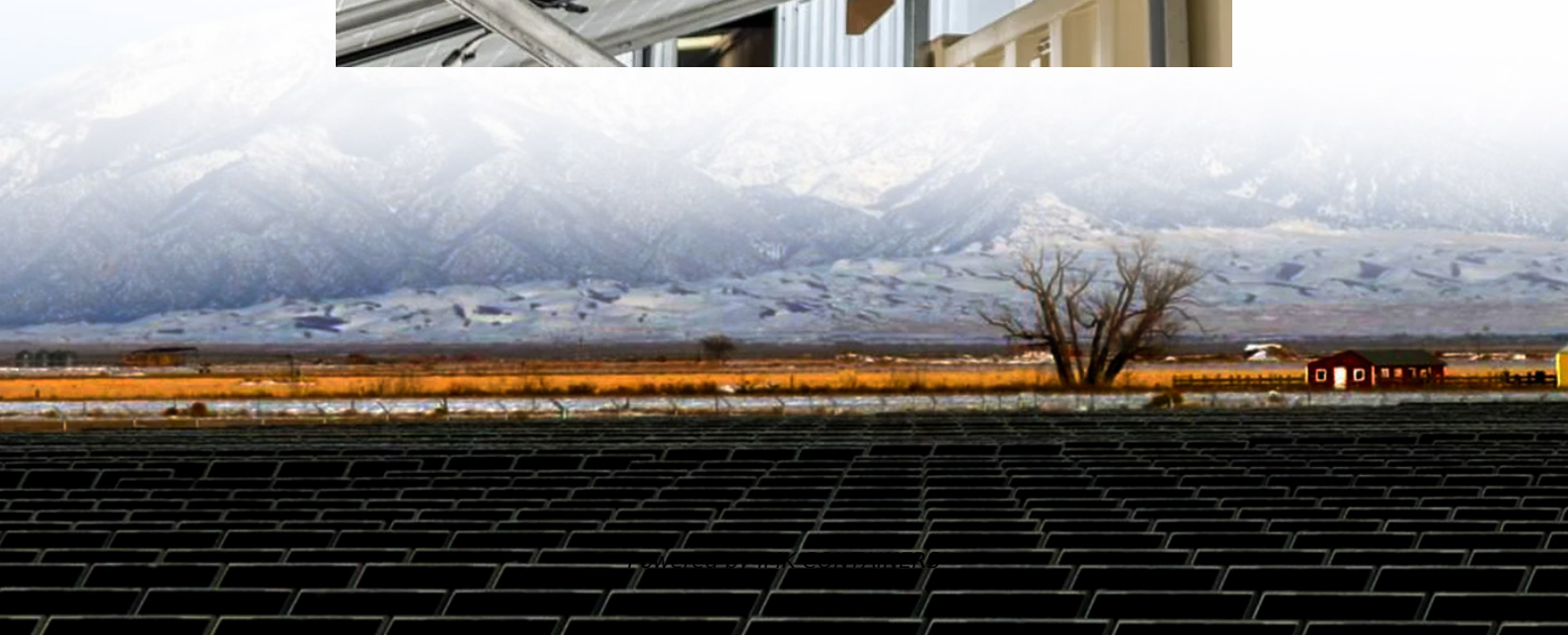


Fdma mobile communication system base station pre-design





Overview

Does GSM use FDMA or TDMA?

Therefore, GSM uses FDMA/TDMA for resource allocation. CDMA (Code Division Multiple Access) is another technique used in IS-95, CDMA-2000, and WCDMA-based cellular technologies. In CDMA, unique codes are assigned to both mobile users and base stations to differentiate them within the system.

When was FDMA first used?

Adoption of FDMA began in the 1980s, and it was used to carry cellphone and car phone calls under the analog 1st generation mobile communication system (1G). Figure 4-2 shows a conceptual diagram of the use of FDMA for satellite communication.

How does FDMA work?

FDMA divides up data streams from multiple users and assigns them to channels using different frequency bands, all of which share a single transmission path (Figure 4-1). Adoption of FDMA began in the 1980s, and it was used to carry cellphone and car phone calls under the analog 1st generation mobile communication system (1G).

How do mobile and base stations communicate?

Mobile and base stations communicate using radio frequency (RF) or electromagnetic waves. Specific RF frequencies are planned based on regional needs. For example, GSM uses the 900 MHz band. Two-way communication requires a frequency pair: one for the uplink (mobile to base station) and one for the downlink (base station to mobile).



Fdma mobile communication system base station pre-design



[FDMA, TDMA, and CDMA Multiple Access: ...](#)

Adoption of FDMA began in the 1980s, and it was used to carry cellphone and car phone calls under the analog 1st generation mobile communication system (1G). Figure 4-1: Conceptual Diagram of ...

[Learn More](#)

[FDMA, TDMA, and CDMA Multiple Access: Effective ...](#)

Adoption of FDMA began in the 1980s, and it was used to carry cellphone and car phone calls under the analog 1st generation mobile communication system (1G). Figure 4-1: ...

[Learn More](#)



[Mobile Base-Station Radio Unit Design ...](#)

We explore critical design challenges from receiver noise optimisation to transmitter efficiency through digital pre-distortion, alongside emerging opportunities in private 5G networks, Vehicle-to-Everything ...

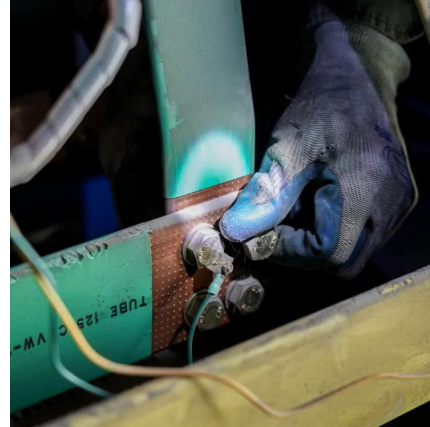
[Learn More](#)



[On mobile communications smart base-station system design](#)

A design technique for mobile base-station antennas is presented. Beam tilting to avoid intersymbol interference is considered, and the orthogonal method (OM) under constraints on ...

[Learn More](#)



[Cellular Communication Basics: A Tutorial](#)

We will explore the following topics: Cellular System Architecture (with GSM example) Cellular Coverage Expansion Techniques (Cell splitting, Cell Sectoring, Frequency Re-use) Access ...

[Learn More](#)



Content of Lectures

FDMA systems have higher cell site system costs as compared to TDMA systems, because of the single channel per carrier design, and the need to use costly bandpass filters ...

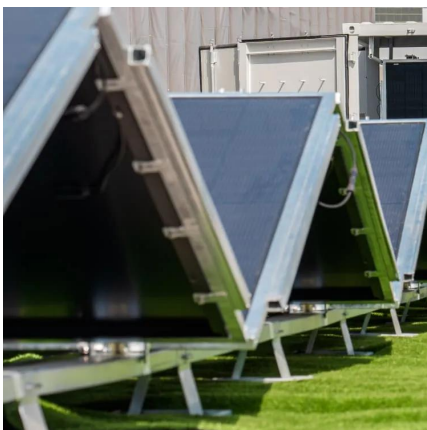
[Learn More](#)



[Mobile Base-Station Radio Unit Design Challenges](#)

We explore critical design challenges from receiver noise optimisation to transmitter efficiency through digital pre-distortion, alongside emerging opportunities in private 5G networks, Vehicle ...

[Learn More](#)

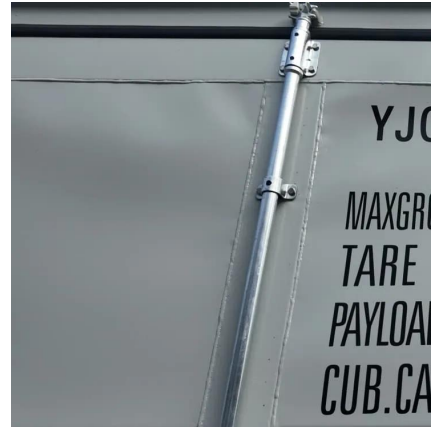


Introduction to LTE



Evolved Packet System Frequency Division
Duplexing Frequency Division Multiple Access
Fast Fourier Transform Frequency-Shift Transmit
Diversity GSM/EDGE Radio Access ...

[Learn More](#)



[Design and realization of 5G mobile base station s ...](#)

III. Software Architecture Design This mobile communication base station inspection report system adopts the front-end separation mode for development, the front-end ...

[Learn More](#)



[Modern Active Antenna Technologies and Design ...](#)

Modern Active Antenna Technologies and Design
Optimization for Base Stations Short version of
the presentation by Tomi Haapala System
Architect (Antennas), Nokia 16th ...

[Learn More](#)



[Mobile Communications](#)

Example: Randomly Addressed Polling -base station signals readiness to all mobile terminals -terminals ready to send can now transmit a random number without collision with ...

[Learn More](#)



[UNIT II CELLULAR ARCHITECTURE](#)



Base Station (BS): AA network element that interconnects the mobile station (or Mobile unit (MU)) to the network via the air interface. Each cell in the network has a BS ...

[Learn More](#)



Contact Us

For catalog requests, pricing, or partnerships, please visit:
<https://fundacjawandea-imk.pl>

Scan QR Code for More Information



<https://fundacjawandea-imk.pl>