

# **Factory price bus tie breaker in Norway**





## Overview

---

What is a bus tie breaker?

A Bus Tie Breaker is an essential device used in electrical systems to connect or isolate individual sections of a switchboard. In maritime and offshore operations, particularly in vessels equipped with Dynamic Positioning (DP) systems, bus tie breakers play a critical role in ensuring power distribution reliability and flexibility.

What is a tie breaker?

A tie breaker is a type of circuit breaker that connects two sections of an electrical bus serving different power sources. They are commonly used to connect electrical systems to power sources and load circuits, as well as to protect people and equipment from overcurrents. In the context of maintenance, tie breakers offer significant advantages.

What are open bus-tie breakers?

This set-up focuses on the use of open bus-tie breakers to separate redundancy groups of gensets and thrusters in a power system configuration. These circuit breakers isolate faulty parts from healthy sections in the power system during faults, such as a short circuit or overload.

Are closed bus ties necessary for DP power systems?

A revised recommended practice issued by DNV can now facilitate the wider adoption of closed bus-ties for the connection of DP power systems in line with recent technological developments to support more robust and fuel-efficient systems. Class requirements for DP system redundancy have traditionally been set up for the safest mode of operation.



## Factory price bus tie breaker in Norway

---



### Bus Tie Breaker

Find Bus Tie Breaker related suppliers, manufacturers, products and specifications on GlobalSpec - a trusted source of Bus Tie Breaker information.

[Learn More](#)



### [DP notation for closed bus-ties](#)

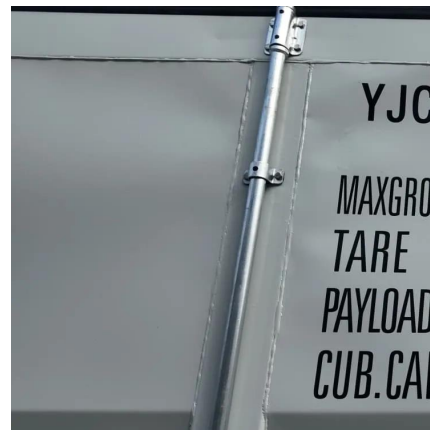
By utilizing modern technology and assurance techniques, combined with necessary procedures, competence and training, high integrity redundant DP systems can be ...

[Learn More](#)

### [15KV & 11KV & 12KV & 10KV Bus Tie Switchgear](#)

Top 10KV, 11KV, 12KV & 15KV Bus Tie Switchgear Manufacturers - Reliable, Custom Solutions for Power Distribution. Get Competitive Pricing & Technical Support .

[Learn More](#)



### [Understanding Bus Tie Breakers: Functionality ...](#)

Learn about bus tie breakers, their functionality, and how they're used in electrical systems to connect and isolate bus sections, enhance reliability, and facilitate maintenance and repairs.

[Learn More](#)



### [BUS TIE BREAKERS AND SWITCHES](#)

Best factory price bus tie breaker Factory What is a bus tie breaker? Some arrangements include a bus tie breaker and others simply utilize switches for the tie between the two buses. Main ...

[Learn More](#)



### [Promoting more robust DP power systems ...](#)

The use of closed bus-ties for dynamic positioning power systems can yield significant benefits for the decarbonization and digitalization of the offshore and shipping sectors. Revised DNV rules ...

[Learn More](#)



### [Solid-State Bus Tie Breaker Market Research Report 2033](#)

According to our latest research, the global Solid-State Bus Tie Breaker market size in 2024 stands at USD 1.21 billion, driven by the robust adoption of advanced power management ...

[Learn More](#)



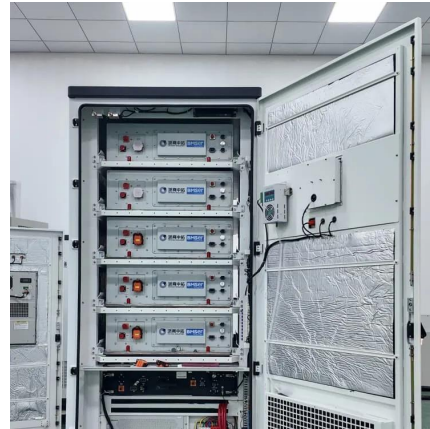




## Promoting more robust DP power systems with closed bus-ties ...

The use of closed bus-ties for dynamic positioning power systems can yield significant benefits for the decarbonization and digitalization of the offshore and shipping ...

[Learn More](#)



## [Bus Tie Breaker: A Key Component in Electrical Power...](#)

A Bus Tie Breaker is an essential device used in electrical systems to connect or isolate individual sections of a switchboard. In maritime and offshore operations, particularly in vessels ...

[Learn More](#)



## [Understanding Bus Tie Breakers: Functionality And Practical](#)

Learn about bus tie breakers, their functionality, and how they're used in electrical systems to connect and isolate bus sections, enhance reliability, and facilitate maintenance ...

[Learn More](#)



## [THE 15 BEST NORWAY FACTORY OUTLETS 2025](#)

Best factory price bus tie breaker Factory What is a bus tie breaker?Some arrangements include a bus tie breaker and others simply utilize switches for the tie between the two buses. Main ...

[Learn More](#)





### [Bus tie breaker , PPM 300 controller by DEIF](#)

Discover DEIF's PPM 300 bus tie breaker controller--smart power management for reliable grid and generator control.

[Learn More](#)



## Contact Us

---

For catalog requests, pricing, or partnerships, please visit:  
<https://fundacjawandea-imk.pl>

### Scan QR Code for More Information



<https://fundacjawandea-imk.pl>