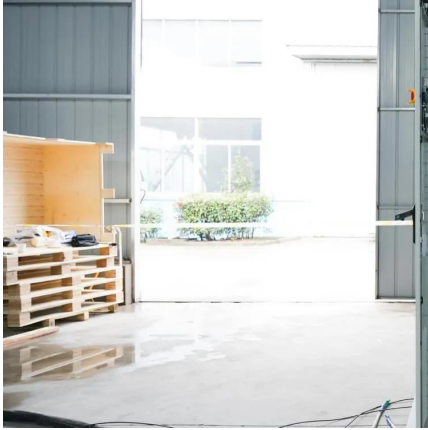


Earthquake-resistant energy storage containers used in schools Central Asia type





Earthquake-resistant energy storage containers used in schools Cen



Earthquakes

Earthquakes can strike suddenly and without warning. An earthquake is a violent and abrupt shaking of the ground, caused by movement between tectonic plates along a fault ...

[Learn More](#)



[Earthquake in Türkiye and the Syrian Arab Republic](#)

On 6 February 2023, a series of large earthquakes hit southern Türkiye and northern Syria, followed by hundreds of aftershocks. Thousands of lives were lost in the initial

[WHO Responds to Nepal Earthquake](#)

Working closely with the government and partners, WHO is supporting to respond to the urgent health needs of the affected populationA 6.4 magnitude earthquake hit Nepal's ...

[Learn More](#)



Emergency

A strong earthquake of 6.4 magnitude hit Nepal's Western Province of Karnali, shortly before midnight, on 3 November 2023. As of 24 November 2023, 154 people (Female: ...

[Learn More](#)



earthquakes ...

[Learn More](#)



[Myanmar earthquake response 2025](#)

Sagaing earthquake in Myanmar On 28 March 2025, two powerful earthquakes struck central Myanmar's Sagaing Region near Mandalay. The first, with a magnitude of 7.7, ...

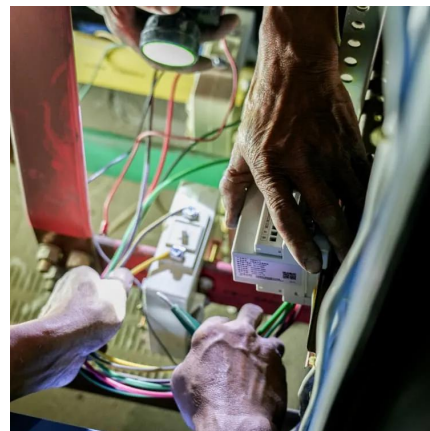
[Learn More](#)



[Great East Japan Earthquake](#)

The Great East Japan Earthquake tested the ability and role of the newly-established Division of Health Security and Emergencies in the Western Pacific Regional ...

[Learn More](#)



On the path to recovery: three months after the earthquake ...

A 7.3 magnitude earthquake struck Port Vila on 17 December 2024, claimed 14 lives, destroyed critical infrastructure, and displaced over 2000 people who needed to stay in ...

[Learn More](#)

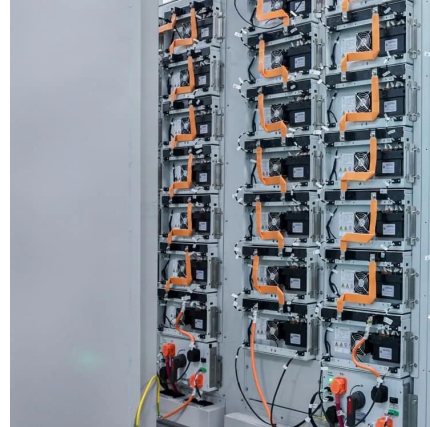




[How rehabilitation provided a second chance to an ...](#)

The earth in Adiyaman, Türkiye, trembled violently on February 6, 2023. For 35-year-old Hamzanur Burak Kizil, everything changed in an instant as buildings collapsed, and ...

[Learn More](#)



[WHO response to Myanmar Earthquake 2025](#)

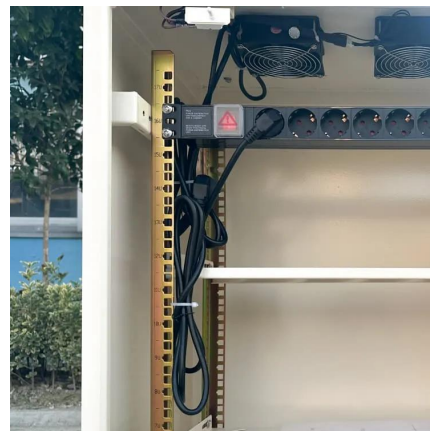
On 28 March 2025, two powerful earthquakes struck central Myanmar's Sagaing Region near Mandalay. The first, with a magnitude of 7.7, occurred at 12:50 p.m. local time, ...

[Learn More](#)

Vanuatu responds to multiple health challenges following ...

On 17 December 2024, a powerful 7.3 magnitude earthquake struck near Port Vila, the capital of Vanuatu, impacting more than a quarter of the country's population. The disaster ...

[Learn More](#)



Contact Us

For catalog requests, pricing, or partnerships, please visit:
<https://fundacjawandea-imk.pl>



Scan QR Code for More Information



<https://fundacja-wandea-imk.pl>