

EU single glass solar curtain wall installation





Overview

What is PV IGU curtain wall system?

PV IGU Curtain Wall System manufacturing with double or tripple glazed units for BIPV solar facade integration.

What is a solar insulated glass unit?

Solar-insulated glass units that Metsolar produces can vary in composition, size, fixing options, and light transmittance. Adjustments are based on the specific project requirements to meet the regulatory environment of installation. IGU with embedded solar cells can be used for both façades (curtain walls) or roofs (skylights).

What is a PV insulated glass unit?

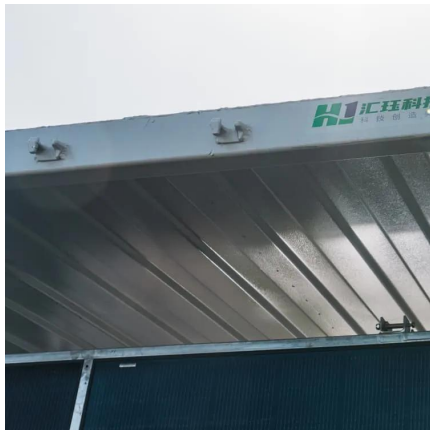
This type of module technology is mainly used for curtain walls and PV skylight (rooftop) projects, where the cladding solution is expected to generate both: electricity and thermal insulation. PV Insulated Glass Units acts as a multi-layer structures for facades and windows.

What is an all-in-one curtain wall system?

The all-in-one curtain wall system is an extra outer shell that not only improves the building's energy balance, but offers the fabric lasting protection from weathering. The SL Modular offers a wide range of options for custom balustrade design.



EU single glass solar curtain wall installation



Curtain Walls

Photovoltaic Curtain Wall The integration of photovoltaic modules in buildings can be carried out in very different ways and gives rise to a wide range of solutions. The facades provide a first view ...

[Learn More](#)



[Facade solutions/curtain walls](#)

SL Modular facade solution A comprehensive solution This modular system is designed as a curtain wall and combines the fixed balustrade element with a flexible and ...

[Learn More](#)



[How to Install PV Curtain Walls and Solar Awnings?](#)

This essay provides an overview of various photovoltaic (PV) curtain wall and awning systems, highlighting their components, structural designs, and key installation ...

[Learn More](#)

[Southern Europe single glass solar curtain wall application](#)

BIPV Solutions: Solar Glass, Curtain Walls, Roof By integrating semi-transparent thin film solar glass into the roof or sidewalls, these greenhouses provide optimal light transmission



for crop ...

[Learn More](#)



PV IGU Solar Glass , Insulated Photovoltaic Units , Metsolar EU

PV Insulated Glass Units acts as a multi-layer structures for facades and windows. The multilayer glass structures with integrated solar modules can be used to provide all-in-one ...

[Learn More](#)



Photovoltaics Integrated Facades Solar Modules Glass Curtain Wall ...

Photovoltaics Integrated Facades Solar Modules Glass Curtain Wall With Single Glass Component Building Integrated Photovoltaic (BIPV Building Integrated PV, PV or ...

[Learn More](#)



[PV IGU Solar Glass , Insulated Photovoltaic ...](#)

PV Insulated Glass Units acts as a multi-layer structures for facades and windows. The multilayer glass structures with integrated solar modules can be used to provide all-in-one thermal insulation and power ...

[Learn More](#)



PHOTOVOLTAIC CURTAIN WALL INSTALLATION AND ...

Photovoltaic curtain wall economics BIPV curtain walls offer numerous benefits, including reduced carbon emissions, lower long-term operational costs, enhanced energy efficiency, and the ...

[Learn More](#)



INSTALLATION OF PHOTOVOLTAIC PANELS ON GLASS CURTAIN WALL

Solar panels photovoltaic power generation in Equatorial Guinea Specifically for Equatorial Guinea, country factsheet has been elaborated, including the information on solar resource ...

[Learn More](#)



Curtain Walls & Spandrels

This glass fits seamlessly into any curtain wall system--single, double, or triple low-e glazing options--while cleverly concealing junction boxes and wiring for a streamlined look.

[Learn More](#)



Contact Us

For catalog requests, pricing, or partnerships, please visit:
<https://fundacjawandea-imk.pl>



Scan QR Code for More Information



<https://fundacja-wandea-imk.pl>