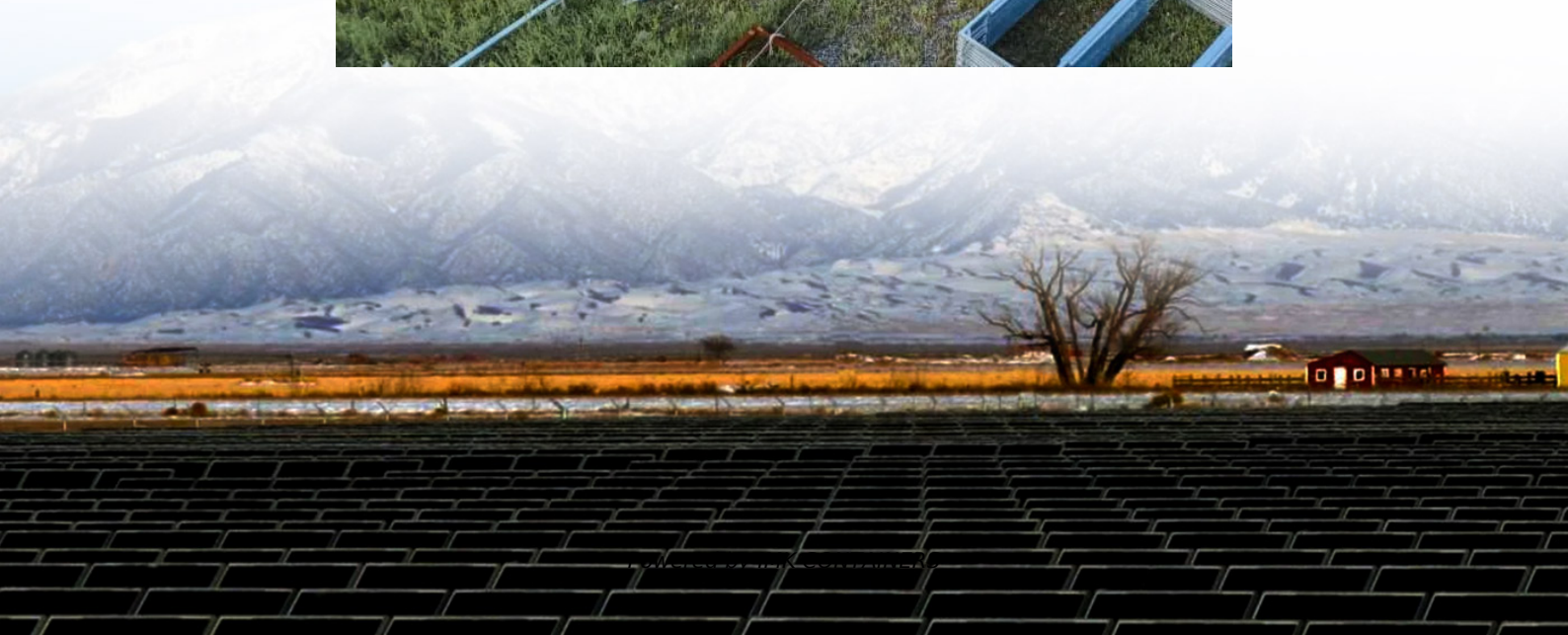


# Double-glass solar module height from the ground





## Overview

---

Why is double glass important for solar panels?

Double Glass is especially important in photovoltaic facilities such as solar power plants and with the expected long service life of modules such as AKCOME, Jinergy or Jolywood. Why solar panels with glass-glass Technology?

Why is solar double glass more durable?

.

What are the benefits of double glazed solar panels?

Double-glazed modules are characterized by increased reliability, especially for large-scale photovoltaic projects. They include better resistance to higher temperatures, humidity and UV conditions, and have better mechanical stability, reducing the risk of microcracks during installation and operation.

What are glass-glass PV modules?

Glass-glass PV modules, also known as double glass solar panels, are photovoltaic modules encapsulated with tempered glass on both the front and back sides. Compared to traditional glass-backsheet modules, they offer greater durability and environmental resistance.

What is a glass-glass solar panel?

Glass-glass module structures (Glass Glass or Double Glass) is a technology that uses a glass layer on the back of the modules instead of the traditional polymer backsheet. Originally double-glass solar panels were heavy and expensive, allowing the lighter polymer backing panels to gain most of the market share. Thanks to producers such as:



## Double-glass solar module height from the ground

---



### [What Is the Average Height of Ground Mounted Solar ...](#)

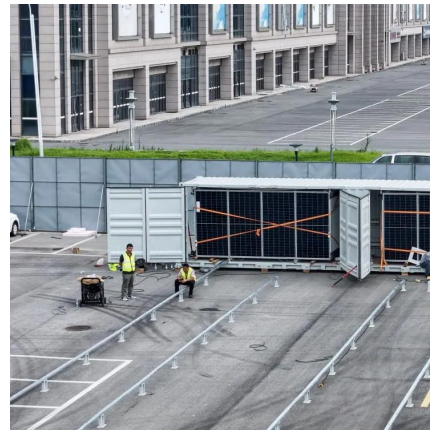
Factors Affecting Height Ground Type and Slope  
For flat terrains, the panels are usually installed at a standard height of around 3 to 4 feet. This height is sufficient to allow for ...

[Learn More](#)

### [2025 Complete Guide to Glass-Glass Solar ...](#)

Table of Contents What Are Glass-Glass PV Modules? Glass-glass PV modules, also known as double glass solar panels, are photovoltaic modules encapsulated with tempered glass on both the front and back ...

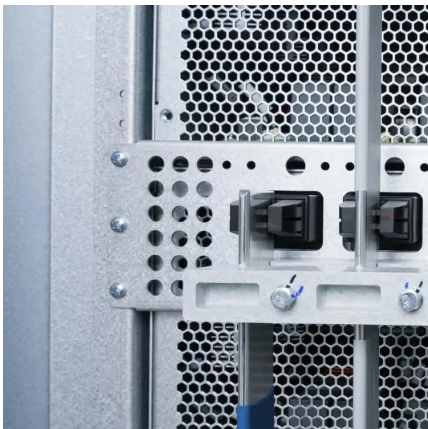
[Learn More](#)



### [Standard Specifications for Photovoltaic Panel Height ...](#)

Residential Roof or Ground Mount Solar Photovoltaic Systems shall comply with the 2016 California Electrical Code, California Residential Code Section 324, California Building ...

[Learn More](#)



### [2025 Complete Guide to Glass-Glass Solar Panels: The Top ...](#)

Table of Contents What Are Glass-Glass PV Modules? Glass-glass PV modules, also known as double glass solar panels, are photovoltaic modules encapsulated with ...





[Learn More](#)



### [Glass-Glass Solar Panel Technology](#)

Double glass solar panels Double-glazed modules are characterized by increased reliability, especially for large-scale photovoltaic projects. They include better resistance to higher temperatures, humidity and UV ...

[Learn More](#)



### [Durable Frameless Dual-Glass Panels for Ground Mount ...](#)

A faster return on investment Trinasolar's DUOMAX 72-cell Modules offer a revolutionary frameless, dual-glass design for rooftop and ground-mount solar installations. ...

[Learn More](#)



### [Glass-Glass Solar Panel Technology](#)

Double glass solar panels Double-glazed modules are characterized by increased reliability, especially for large-scale photovoltaic projects. They include better resistance to higher ...

[Learn More](#)





## [Solarspace Double Glass Photovoltaic Modules ...](#)

Thanks for choosing Solarspace Solar PV modules. This guide contains information regarding the installation and safe handling of Solar- space photovoltaic module (hereafter is ...

[Learn More](#)



## [Durable Frameless Dual-Glass Panels for ...](#)

A faster return on investment Trinasolar's DUOMAX 72-cell Modules offer a revolutionary frameless, dual-glass design for rooftop and ground-mount solar installations. With lower degradation rates and higher ...

[Learn More](#)



## [A Comprehensive Guide to Bifacial Solar ...](#)

Less Flexible To take the full advantage of double-sided solar cells, bifacial solar panels work best when they are at least four meters from the ground. In the case of roof mounts this means using a raised platform ...

[Learn More](#)



## [Solar panel mounting height , Solamp IO Help Center](#)

Solar panel mounting height refers to the vertical distance between the ground (or the mounting surface) and the lowest edge of the solar panels in a ground-mounted or elevated solar array. ...

[Learn More](#)



## [A Comprehensive Guide to Bifacial Solar Panels](#)

Less Flexible To take the full advantage of double-sided solar cells, bifacial solar panels work best when they are at least four meters from the ground. In the case of roof ...

[Learn More](#)



## [Best Practices for Installing Bifacial Solar Panels](#)

Discover the benefits of bifacial solar panels and learn how to optimize their installation for maximum efficiency. This article covers different panel types and essential best ...

[Learn More](#)

## [What Is the Average Height of Ground Mounted Solar Panels?](#)

Factors Affecting Height Ground Type and Slope For flat terrains, the panels are usually installed at a standard height of around 3 to 4 feet. This height is sufficient to allow for ...

[Learn More](#)



## [Installation Manual\( Double glass PV module\)](#)

The Purpose This installation manual provides installation instructions for the double glass solar modules (hereinafter referred to as double glass PV modules) of Ningbo ...

[Learn More](#)



## Contact Us

---

For catalog requests, pricing, or partnerships, please visit:  
<https://fundacjawandea-imk.pl>

### Scan QR Code for More Information



<https://fundacjawandea-imk.pl>