

Does the Smart e-Net 5G base station need to be plugged in





Overview

What is a standalone 5G network?

Standalone (SA): standalone networking. SA uses an end-to-end 5G network architecture, where 5G standards are used on terminals, base stations, and core networks. SA supports a variety of 5G new services, including eMBB, URLLC, and mMTC, and is applicable to the middle and later stages of 5G network construction. Routers support NSA and SA.

Can network energy saving technologies mitigate 5G energy consumption?

This technical report explores how network energy saving technologies that have emerged since the 4G era, such as carrier shutdown, channel shutdown, symbol shutdown etc., can be leveraged to mitigate 5G energy consumption.

How to evaluate a 5G energy-optimised network?

To properly examine an energy-optimised network, it is very crucial to select the most suitable EE metric for 5G networks. EE is the ratio of transmitted bits for every joule of energy expended. Therefore, while measuring it, different perspectives need to be considered such as from the network or user's point of view.

What is the ITU-T Technical Report on 5G base station?

This document contains Version 1.0 of the ITU-T Technical Report on "Smart Energy Saving of 5G Base Station: Based on AI and other emerging technologies to forecast and optimize the management of 5G wireless network energy consumption" approved at the ITU-T Study Group 5 meeting held online, 20th May, 2021. 3.1.



Does the Smart e-Net 5G base station need to be plugged in



[Final draft of deliverable D.WG3-02-Smart Energy Saving ...](#)

This document contains Version 1.0 of the ITU-T Technical Report on "Smart Energy Saving of 5G Base Station: Based on AI and other emerging technologies to forecast ...

[Learn More](#)

[Energy Management of Base Station in 5G and B5G: Revisited](#)

Due to infrastructural limitations, non-standalone mode deployment of 5G is preferred as compared to standalone mode. To achieve low latency, higher throughput, larger ...

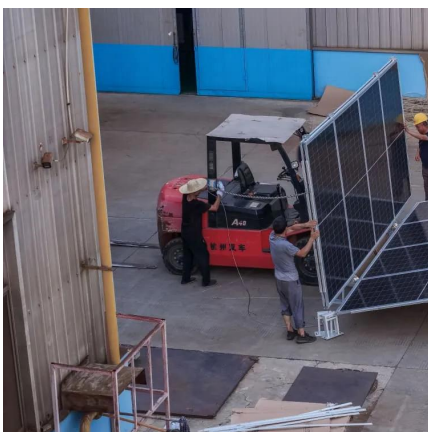
[Learn More](#)



[Unveiling the 5G Base Station: The Backbone of Next-Gen ...](#)

Explore the inner workings of 5G base stations, the critical infrastructure enabling high-speed, low-latency wireless connectivity. Discover their components, architecture, ...

[Learn More](#)



Optimal energy-saving operation strategy of 5G base station ...

To further explore the energy-saving potential of 5 G base stations, this paper proposes an energy-saving operation model for 5 G base stations that incorporates ...



[Learn More](#)



[5G-oriented Site Evolution](#)

5G presents many daunting challenges for site evolution. Market insights show that only one pole can be deployed for each sector at 50% of sites. New antennas cannot be installed due to ...

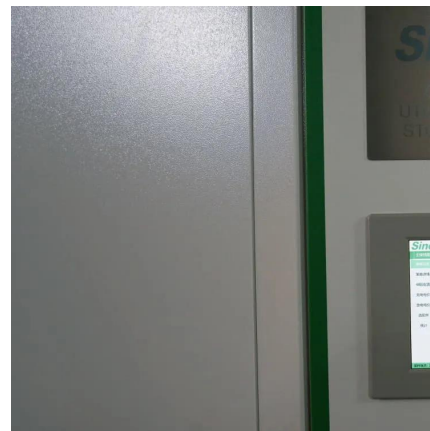
[Learn More](#)



[5G Network Architectures and Technologies](#)

In NSA networking, 5G base stations cannot be deployed independently, requiring LTE base stations to be used as anchor points on the control plane for access to the core network. NSA ...

[Learn More](#)



[5G-oriented Site Evolution](#)

5G presents many daunting challenges for site evolution. Market insights show that only one pole can be deployed for each sector at 50% of sites. New antennas cannot be installed due to limited antenna space. The ...

[Learn More](#)

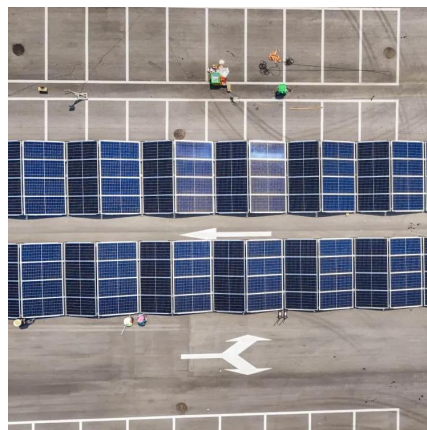


[Unveiling the 5G Base Station: The Backbone ...](#)



Explore the inner workings of 5G base stations, the critical infrastructure enabling high-speed, low-latency wireless connectivity. Discover their components, architecture, enabling technologies, ...

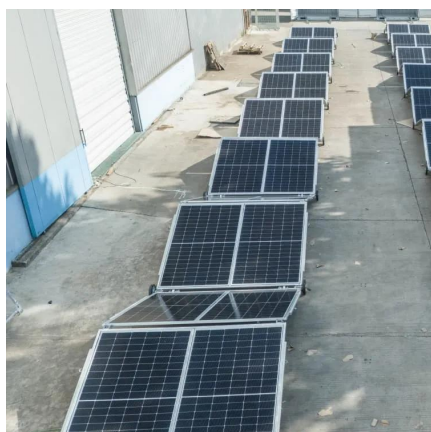
[Learn More](#)



[5g network installation](#)

The deployment of a 5G network involves several technical steps, including infrastructure development, spectrum allocation, and equipment installation. Here is a detailed ...

[Learn More](#)



[A 5G network with a Base Station, using an ...](#)

Therefore, we will setup the base station and configure it to be able to integrate the SDR, specifically, an URSPB200-mini. Quectel RM500Q-GL + Quectel 5G-M2 EVB. A 5G module will be required to test the 5G Network ...

[Learn More](#)



[Energy-efficiency schemes for base stations in 5G ...](#)

In today's 5G era, the energy efficiency (EE) of cellular base stations is crucial for sustainable communication. Recognizing this, Mobile Network Operators are actively prioritizing EE for ...

[Learn More](#)



Communication Base Station Smart Control , Huijue



Group E ...

Why Traditional Networks Can't Keep Up with 5G Demands? As global mobile data traffic surges 35% annually, legacy communication base station management struggles to balance energy ...

[Learn More](#)



[A 5G network with a Base Station, using an SDR and](#)

Therefore, we will setup the base station and configure it to be able to integrate the SDR, specifically, an URSPB200-mini. Quectel RM500Q-GL + Quectel 5G-M2 EVB. A 5G module ...

[Learn More](#)



Contact Us

For catalog requests, pricing, or partnerships, please visit:
<https://fundacjawandea-imk.pl>

Scan QR Code for More Information



<https://fundacjawandea-imk.pl>