

Does energy storage power station work require shift work





Overview

What time does the energy storage power station operate?

During the three time periods of 03:00–08:00, 15:00–17:00, and 21:00–24:00, the loads are supplied by the renewable energy, and the excess renewable energy is stored in the FESPS or/and transferred to the other buses. Table 1. Energy storage power station.

Should energy storage power stations be scaled?

In addition, by leveraging the scaling benefits of power stations, the investment cost per unit of energy storage can be reduced to a value lower than that of the user's investment for the distributed energy storage system, thereby reducing the total construction cost of energy storage power stations and shortening the investment payback period.

What are the core functions of energy storage power stations?

In addition to these core functions, functions such as anti-backflow protection, support for parallel/off-grid operation, and islanding protection further enhance the reliability and versatility of energy storage power stations.

What are battery storage power stations?

Battery storage power stations are usually composed of batteries, power conversion systems (inverters), control systems and monitoring equipment. There are a variety of battery types used, including lithium-ion, lead-acid, flow cell batteries, and others, depending on factors such as energy density, cycle life, and cost.



Does energy storage power station work require shift work



[Does energy storage power station work require shift work](#)

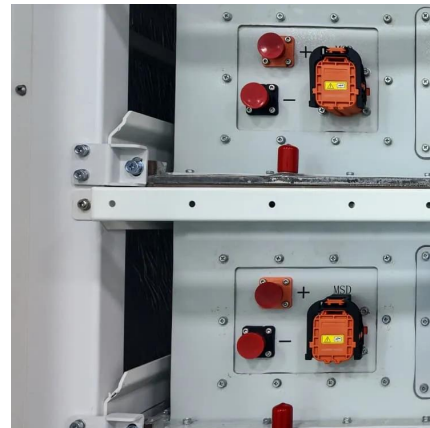
Energy storage power stations utilize various technologies to store and release energy, predominantly serving the purpose of balancing supply and demand. 2. They play a critical ...

[Learn More](#)

[How Energy Storage Power Stations Work: The Backbone of ...](#)

The Grid's Nightmare: Why We Need Energy Storage Imagine California's grid operator sweating through a summer heatwave. Solar production plummets at sunset just as millions crank up ...

[Learn More](#)



[Battery storage power station - a comprehensive guide](#)

Battery storage power stations store electrical energy in various types of batteries such as lithium-ion, lead-acid, and flow cell batteries. These facilities require efficient operation ...

[Learn More](#)



[How Does an Energy Storage Power Station Work? The ...](#)

From Sunshine to Socket: The Magic of Energy Storage Imagine a giant "power bank" for cities--this is essentially what an energy storage power station does. Unlike your smartphone ...



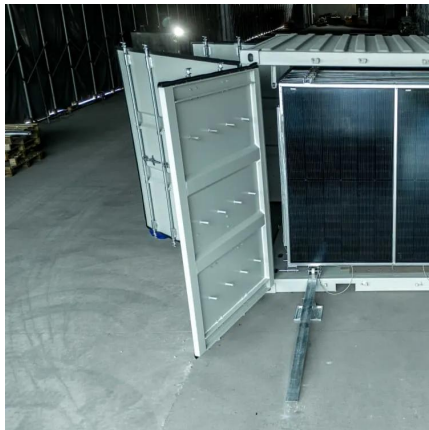
[Learn More](#)



[How does an energy storage power station actually work?](#)

The advancement of energy storage technologies reflects an urgent need to address the challenges posed by climate change and energy transition. With renewable energy ...

[Learn More](#)



[How does the energy storage station work? ..](#)
[NenPower](#)

How does the energy storage station work? 1. Energy storage stations function by harnessing and retaining energy for future use, enabling load management, stabilizing grid ...

[Learn More](#)



[Does the energy storage power station require night ...](#)

Can battery energy storage systems be optimally placed in power networks? This paper introduces a novel approach for the optimal placement of battery energy storage systems ...

[Learn More](#)





Flexible energy storage power station with dual functions of power ...

The high proportion of renewable energy access and randomness of load side has resulted in several operational challenges for conventional power systems. Firstly, this paper ...

[Learn More](#)



[How does an energy storage power station ...](#)

The advancement of energy storage technologies reflects an urgent need to address the challenges posed by climate change and energy transition. With renewable energy sources like solar and wind generating ...

[Learn More](#)



[HOW DO ENERGY STORAGE STATIONS WORK](#)

What are the applications of energy storage in power systems? In order to achieve these goals, components such as energy storage will be included, and potentially in large scale. Many ...

[Learn More](#)



A Simple Guide to Energy Storage Power Station Operation ...

This approach minimizes downtime and extends the lifespan of the system. Conclusion Energy storage power stations are the backbone of modern energy management, ...

[Learn More](#)





Contact Us

For catalog requests, pricing, or partnerships, please visit:
<https://fundacjawandea-imk.pl>

Scan QR Code for More Information



<https://fundacjawandea-imk.pl>