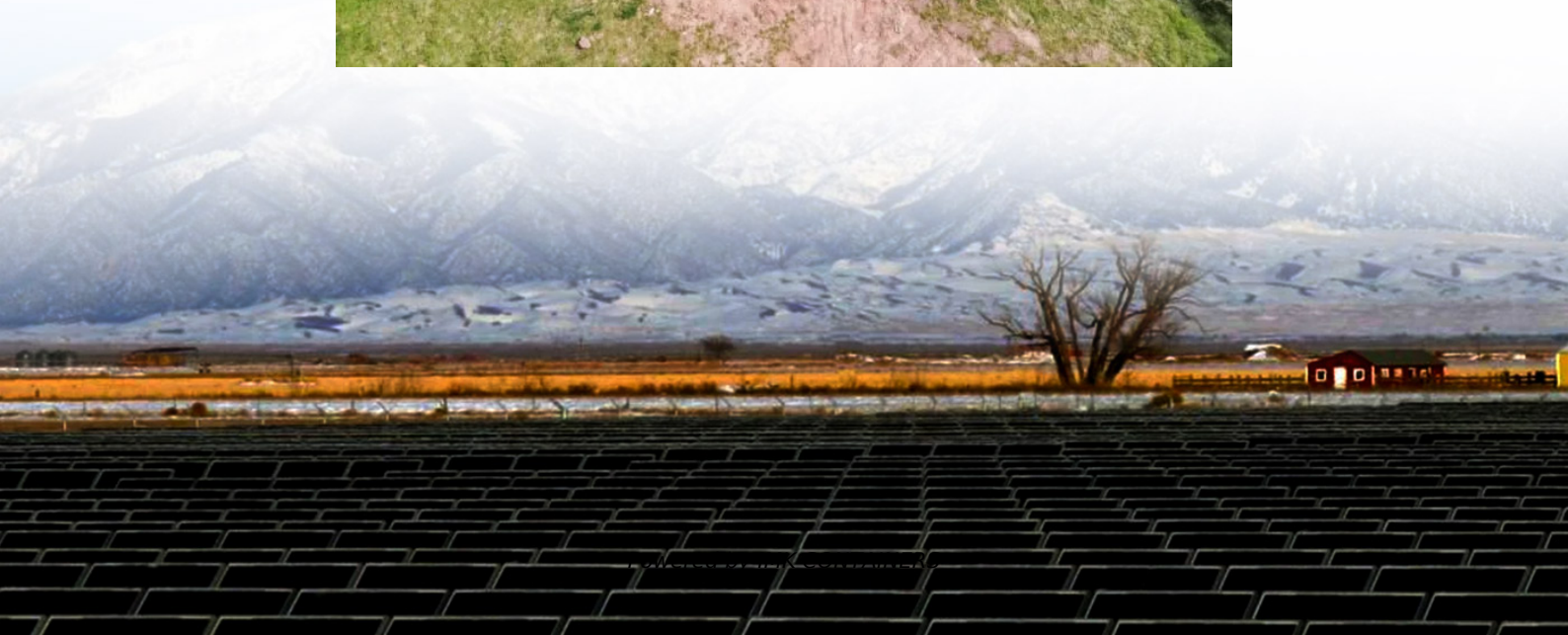


# Does a 5G base station require a lot of power





## Overview

---

Are 5G base stations causing more energy consumption?

However, Li says 5G base stations are carrying five times the traffic as when equipped with only 4G, pushing up power consumption. The carrier is seeking subsidies from the Chinese government to help with the increased energy usage.

How much power does a 5G base station consume?

That's almost a threefold increase compared to 4G (5). One 5G base station is estimated to consume about as much power as 73 households (6), and 3x as much as the previous generation of base stations (5), (7).

Does China Mobile have a 5G base station?

China Mobile has tried using lower cost deployments of MIMO antennas, specifically 32T32R and sometimes 8T8R rather than 64T64R, according to MTN. However, Li says 5G base stations are carrying five times the traffic as when equipped with only 4G, pushing up power consumption.

What should be considered in a 5G network?

The further completion of the map of power models (Fig. 2) and systematization of their features as well as the comparison is also part of the future work. Lastly, the aspects of computing (network function virtualization) and functional split options of the RAN need to be considered for 5G networks as well.



## Does a 5G base station require a lot of power

---



### [Energy Management of Base Station in 5G and B5G: Revisited](#)

Since mmWave base stations (gNodeB) are typically capable of radiating up to 200-400 meters in urban locality. Therefore, high density of these stations is required for ...

### [Learn More](#)

### [How Much Power Does 5G Base Station Consume?](#)

The Silent Energy Crisis in Mobile Networks Have you ever wondered how much energy our hyper-connected world is consuming? 5G base stations, the backbone of next-gen ...

### [Learn More](#)



### [What is the Power Consumption of a 5G Base Station?](#)

Compared to its predecessor, 4G, the energy demand from 5G base stations has massively grown owing to new technical requirements needed to support higher data rates ...

### [Learn More](#)



### **What is the reason for the high energy consumption of 5G base station**

Let me explain it to you. The energy consumption of 5G base stations is mainly concentrated in four parts: base stations, transmission, power supply and air conditioning in ...





[Learn More](#)



[How much power does 5G consume?](#)

One 5G base station is estimated to consume about as much power as 73 households (6), and 3x as much as the previous generation of base stations (5), (7). When base stations, data centers and devices are added ...

[Learn More](#)



[Why does 5g base station consume so much ...](#)

The power consumption of the 5G base station mainly comes from the AU module processing and conversion and high power-consuming high radio frequency signals, the extremely high-algorithm and high ...

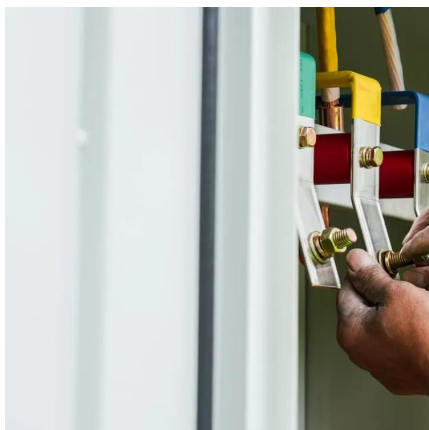
[Learn More](#)



[What is 5G Energy Consumption?](#)

The 5G network is a dynamic system that consumes energy continually and responds to spikes in network activity. Over 70% of this energy is consumed by RAN ...

[Learn More](#)



[Power Consumption: 5G Basestations Are Hungry, Hungry ...](#)



5G basestations are pushing up power requirements by three times, as MIMO and more digital circuitry require more power.

[Learn More](#)



[Why does 5g base station consume so much power and how ...](#)

The power consumption of the 5G base station mainly comes from the AU module processing and conversion and high power-consuming high radio frequency signals, the ...

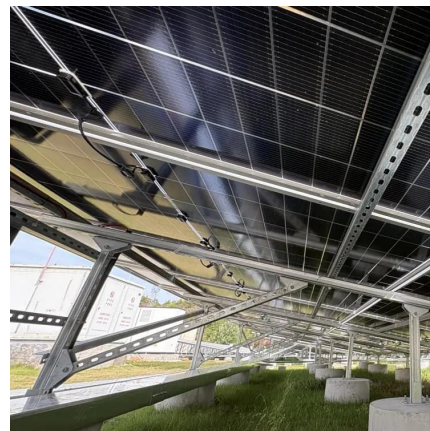
[Learn More](#)



#### Comparison of Power Consumption Models for 5G Cellular Network Base

This paper conducts a literature survey of relevant power consumption models for 5G cellular network base stations and provides a comparison of the models. It highlights ...

[Learn More](#)



[How much power does 5G consume?](#)

One 5G base station is estimated to consume about as much power as 73 households (6), and 3x as much as the previous generation of base stations (5), (7). When base stations, data centers ...

[Learn More](#)



**5G base stations use a lot more energy than 4G base**



#### stations...

According to Huawei data on RRU/BBU needs per site, the typical 5G site has power needs of over 11.5 kilowatts, up nearly 70% from a base station deploying a mix of 2G, ...

[Learn More](#)



## Contact Us

---

For catalog requests, pricing, or partnerships, please visit:  
<https://fundacjawandea-imk.pl>

### Scan QR Code for More Information



<https://fundacjawandea-imk.pl>