

Dodoma lithium batteries are all cylindrical





Overview

What is a cylindrical lithium ion battery?

Cylindrical lithium-ion battery cells are a type of rechargeable battery commonly used in a wide range of electronic devices, electric vehicles, and energy storage systems. They are characterized by their cylindrical shape, standardized sizes, and high energy density, making them versatile and suitable for various applications.

What is a cylindrical lithium ion cell?

The structure of cylindrical lithium-ion cell The round lithium battery refers to the cylindrical lithium-ion cell. The earliest cylindrical lithium-ion cell was the 18650 lithium battery invented by the Japanese company SONY in 1992. Due to the long history of the 18650 cylindrical lithium-ion cell, the popularity of the market is very high.

What is the difference between a cylindrical and a prismatic battery?

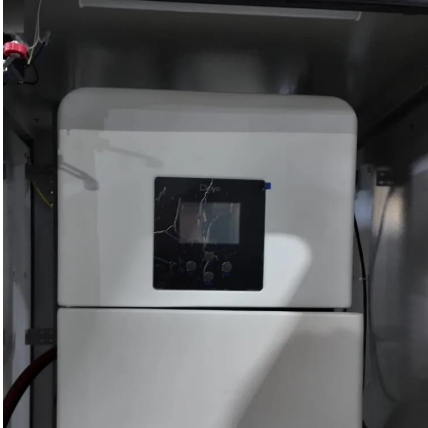
Cylindrical cells feature a compact, standardized design, making them ideal for modular battery packs. Prismatic cells, on the other hand, offer higher energy density per unit, which suits applications requiring fewer cells.

How many Li-ion cylindrical battery cells are there?

This paper investigates 19 Li-ion cylindrical battery cells from four cell manufacturers in four formats (18650, 20700, 21700, and 4680). We aim to systematically capture the design features, such as tab design and quality parameters, such as manufacturing tolerances and generically describe cylindrical cells.



Dodoma lithium batteries are all cylindrical



[The Ultimate Guide to Cylindrical Lithium-Ion Batteries: ...](#)

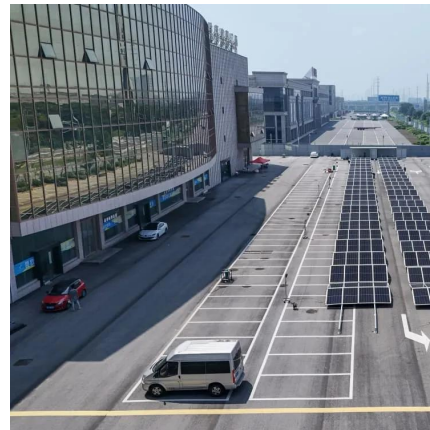
A Comprehensive Guide to Cylindrical Lithium-Ion Batteries: Manufacturers, Types, and Features
Cylindrical lithium-ion batteries have gained significant traction in various ...

[Learn More](#)

[How cylindrical lithium ion battery cells are made](#)

This is what the cylindrical cells of lithium ion batteries look like, containing: anode, cathode, separator and electrolyte

[Learn More](#)



[A Comprehensive Guide to Cylindrical Lithium-Ion Cells](#)

The story of cylindrical lithium-ion battery cells traces back to the 1990s, when researchers pioneered the development of rechargeable lithium-ion batteries. The cylindrical ...

[Learn More](#)



[Types of Cylindrical Lithium-ion Cell](#)

I. Introduction of cylindrical lithium-ion cell
Cylindrical lithium batteries are divided into lithium cobalt oxide, lithium manganate, and ternary materials. The three data system ...

[Learn More](#)



[Lithium Battery Configurations and Types of...](#)

There are three types of cells that are used in lithium batteries: cylindrical, prismatic, and pouch cells. For the purpose of this blog, all cells are lithium iron phosphate (LiFePO4) and 3.2 volts (V).

[Learn More](#)



Pouch vs. Prismatic vs. Cylindrical? Your Lithium Battery Cell ...

What's the difference between pouch, prismatic, and cylindrical cells in lithium batteries? Read our guide to find the right battery cell type for your system.

[Learn More](#)



Cylindrical lithium battery classification and lithium battery

Cylindrical lithium batteries are divided into different systems of lithium iron phosphate, lithium cobaltate, lithium manganate, cobalt-manganese mixture, and ternary ...

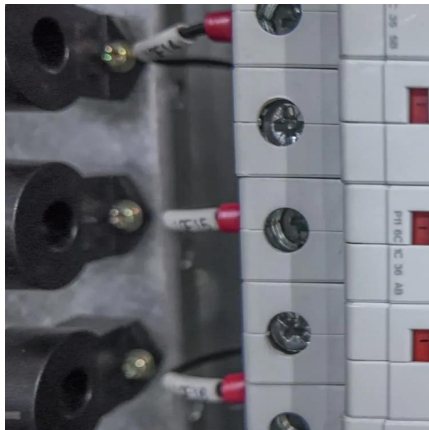
[Learn More](#)



Pouch vs. Prismatic vs. Cylindrical? Your Lithium Battery ...

What's the difference between pouch, prismatic, and cylindrical cells in lithium batteries? Read our guide to find the right battery cell type for your system.

[Learn More](#)



[What You Need to Know About Cylindrical ...](#)

Cylindrical cells are robust lithium-ion batteries with high energy density, scalability, and durability, ideal for electric vehicles and energy storage systems.

[Learn More](#)

[What You Need to Know About Cylindrical Cells](#)

Cylindrical cells are robust lithium-ion batteries with high energy density, scalability, and durability, ideal for electric vehicles and energy storage systems.

[Learn More](#)



[Lithium Battery Configurations and Types of Lithium Cells](#)

There are three types of cells that are used in lithium batteries: cylindrical, prismatic, and pouch cells. For the purpose of this blog, all cells are lithium iron phosphate ...

[Learn More](#)





Design, Properties, and Manufacturing of Cylindrical Li-Ion Battery

The tab design is particularly essential in designing cylindrical Li-ion battery cells to avoid inhomogeneities in the battery cell, mainly due to extended thermal and electrical ...

[Learn More](#)



[How cylindrical lithium ion battery cells are ...](#)

This is what the cylindrical cells of lithium ion batteries look like, containing: anode, cathode, separator and electrolyte

[Learn More](#)



[Dodoma lithium batteries are all cylindrical](#)

About Dodoma lithium batteries are all cylindrical
At SolarPro Energy, we specialize in comprehensive solar power generation systems including battery energy storage cabinets, ...

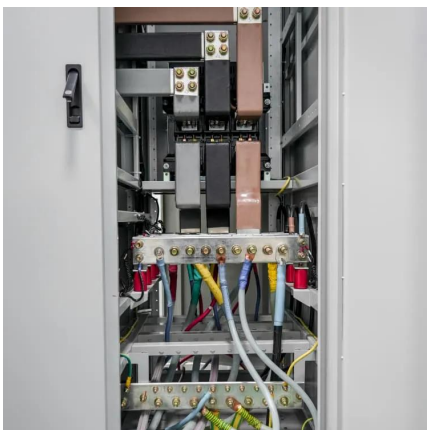
[Learn More](#)



[Design, Properties, and Manufacturing of ...](#)

The tab design is particularly essential in designing cylindrical Li-ion battery cells to avoid inhomogeneities in the battery cell, mainly due to extended thermal and electrical transport paths.

[Learn More](#)





[A Comprehensive Guide to Cylindrical Lithium ...](#)

The story of cylindrical lithium-ion battery cells traces back to the 1990s, when researchers pioneered the development of rechargeable lithium-ion batteries. The cylindrical form factor emerged as a practical ...

[Learn More](#)



[Cylindrical lithium battery classification and ...](#)

Cylindrical lithium batteries are divided into different systems of lithium iron phosphate, lithium cobaltate, lithium manganate, cobalt-manganese mixture, and ternary materials. The shell is divided into steel ...

[Learn More](#)

Contact Us

For catalog requests, pricing, or partnerships, please visit:
<https://fundacjawandea-imk.pl>

Scan QR Code for More Information



<https://fundacjawandea-imk.pl>