

Do solar panels have to face south to maximize power generation





Overview

How does solar panel orientation affect energy production?

Solar panel orientation directly impacts energy production through three primary mechanisms: the amount of direct sunlight panels receive, shading interference from surrounding objects, and the angle at which sunlight strikes the panel surface. The direction your panels face dictates how many hours of peak sun they receive.

Why do solar panels have a south-facing orientation?

A south-facing orientation ensures the panels are directly aligned with the sun's arc for the majority of the day, soaking up as many rays as possible. For example, in a city like Chicago, panels facing south can generate significantly more energy than those facing east or west, especially during peak sunlight hours.

Why do solar panels face and tilt angle work together?

The direction panels face and their tilt angle work together to maximize energy production from available sunlight. Solar panel orientation refers to the compass direction that solar panels face when installed. This positioning determines which cardinal direction – north, south, east, or west – the panel surface points toward during operation.

How do solar panels affect electricity production?

The direction your solar panels face directly impacts the amount of sunlight they receive, which in turn affects the electricity generated. This guide will explore the factors influencing sunlight exposure, the benefits of different panel orientations, and strategies for optimizing energy production.



Do solar panels have to face south to maximize power generation



[Does My Roof Have to Face South for Solar?](#)

For example, east or west-facing solar panels that are at a 15-degree tilt trail the production of south-facing panels by 15% instead of 20% when at a 30-degree tilt. Sub-optimal roof pitch can be corrected by constructing a ...

[Learn More](#)

[Solar Panel Orientation: Find the Best Angle and Direction](#)

Solar panel orientation refers to the compass direction that solar panels face when installed. This positioning determines which cardinal direction - north, south, east, or west - ...

[Learn More](#)



[Do Solar Panels Need to Face South? - Solara ...](#)

When considering solar energy for your home or business, one of the most common questions is whether solar panels must face south to be effective. While south-facing panels are generally the most efficient, ...

[Learn More](#)

[What Direction Should Solar Panels Face?](#)

Overview The optimal direction for solar panels to face is generally south in the Northern Hemisphere, as this orientation maximizes sunlight capture throughout the day, potentially



increasing energy ...

[Learn More](#)

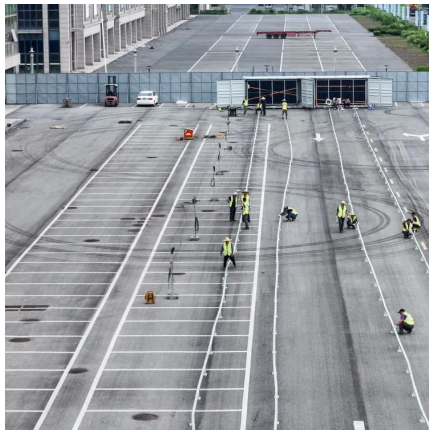


[Solar Panel Direction & Orientation: 2025](#)

...

Discover the optimal direction and angle for solar panels to maximize energy output. Complete guide with calculations, tools, and location-specific recommendations for 2025.

[Learn More](#)



What Direction Should Solar Panels Face? Understanding the ...

Overview The optimal direction for solar panels to face is generally south in the Northern Hemisphere, as this orientation maximizes sunlight capture throughout the day, ...

[Learn More](#)



Maximize Efficiency: Best Direction for Solar Panels , Sunrun

Learn the best direction for solar panels to optimize energy efficiency and savings. Find expert advice on positioning your panels for maximum performance.

[Learn More](#)





Do Solar Panels Need to Face South? - Solara Solar

When considering solar energy for your home or business, one of the most common questions is whether solar panels must face south to be effective. While south-facing ...

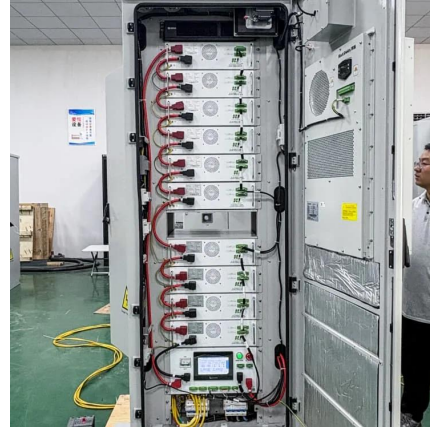
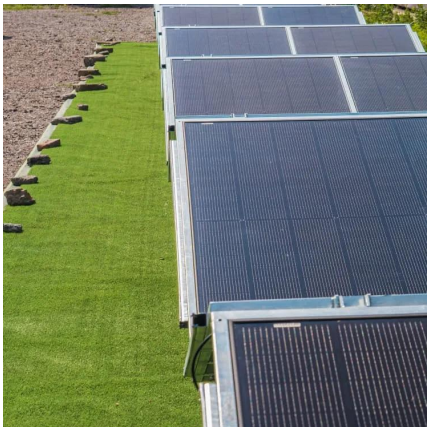
[Learn More](#)



What direction should solar panels face?

The direction your solar panels face directly impacts the amount of sunlight they receive, which in turn affects the electricity generated. This guide will explore the factors influencing sunlight ...

[Learn More](#)



Why are solar panels facing due south? , NenPower

Investing in renewable energy through solar panels exemplifies a commitment to sustainability and efficiency, with the south-facing orientation maximizing this potential. By ...

[Learn More](#)



Why are solar panels facing due south?

Investing in renewable energy through solar panels exemplifies a commitment to sustainability and efficiency, with the south-facing orientation maximizing this potential. By prioritizing effective ...

[Learn More](#)



Unlock the Best Direction for Solar Panels to Face: Tips to ...

The optimal direction for solar panels depends on hemisphere: south in the Northern Hemisphere and north in the Southern Hemisphere. This alignment maximizes ...

[Learn More](#)



[Solar Panel Orientation: Find the Best Angle ...](#)

Solar panel orientation refers to the compass direction that solar panels face when installed. This positioning determines which cardinal direction - north, south, east, or west - the panel surface points toward ...

[Learn More](#)

[Do Solar Panels Need to Face South?](#)

The installation of a solar photovoltaic system involves many design choices, and the direction the panels face is one of the most fundamental. In the Northern Hemisphere, the long-standing ...

[Learn More](#)



[What direction should solar panels face?](#)

The direction your solar panels face directly impacts the amount of sunlight they receive, which in turn affects the electricity generated. This guide will explore the factors ...

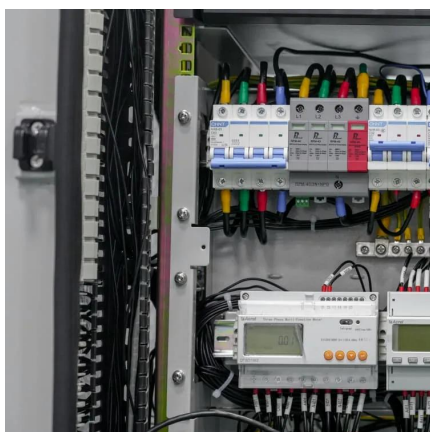
[Learn More](#)



[Does My Roof Have to Face South for Solar? , Home Solar 101](#)

For example, east or west-facing solar panels that are at a 15-degree tilt trail the production of south-facing panels by 15% instead of 20% when at a 30-degree tilt. Sub-optimal roof pitch ...

[Learn More](#)



[Maximize Efficiency: Best Direction for Solar ...](#)

Learn the best direction for solar panels to optimize energy efficiency and savings. Find expert advice on positioning your panels for maximum performance.

[Learn More](#)



[Solar Panel Direction & Orientation: 2025 Complete Guide](#)

Discover the optimal direction and angle for solar panels to maximize energy output. Complete guide with calculations, tools, and location-specific recommendations for 2025.

[Learn More](#)



Contact Us

For catalog requests, pricing, or partnerships, please visit:
<https://fundacjawandea-imk.pl>



Scan QR Code for More Information



<https://fundacja-wandea-imk.pl>