

Cylindrical lithium iron phosphate batteries in parallel





Overview

What is a lithium iron phosphate (LiFePO₄) battery?

Lithium Iron Phosphate (LiFePO₄) batteries have become increasingly popular for residential and commercial energy storage systems (ESS) due to their superior performance and durability. In the past, cylindrical cells were the most used battery cells, but with advancements in technology, prismatic cells are gaining popularity.

What is a lithium iron phosphate battery circular economy?

Resource sharing is another important aspect of the lithium iron phosphate battery circular economy. Establishing a battery sharing platform to promote the sharing and reuse of batteries can improve the utilization rate of batteries and reduce the waste of resources.

What is lithium iron phosphate battery?

Lithium iron phosphate battery has a high performance rate and cycle stability, and the thermal management and safety mechanisms include a variety of cooling technologies and overcharge and overdischarge protection. It is widely used in electric vehicles, renewable energy storage, portable electronics, and grid-scale energy storage systems.

What is a cylindrical lithium ion battery?

Cylindrical cells one of the most widely used lithium ion battery shapes due to ease to use and good mechanical stability. The tubular cylindrical shape can withstand high internal pressures without collapsing. Melasta produces multiple sizes and capacities according to the customer requirement.



Cylindrical lithium iron phosphate batteries in parallel



Why Cylindrical LiFePO₄ Cells Are Revolutionizing Energy ...

The Unique Advantage of Cylindrical LiFePO₄ Design Cylindrical LiFePO₄ cells combine lithium iron phosphate chemistry with robust mechanical structuring to deliver: ...

[Learn More](#)



A generalized equivalent circuit model for lithium-iron phosphate batteries

In this work, a generalized equivalent circuit model for lithium-iron phosphate batteries is proposed, which only relies on the nominal capacity, available in the cell ...

[Recent Advances in Lithium Iron Phosphate Battery ...](#)

This review paper aims to provide a comprehensive overview of the recent advances in lithium iron phosphate (LFP) battery technology, encompassing materials ...

[Learn More](#)



[LiFe-Shenzhen Melasta Battery Co., Ltd](#)

These cells have high density and light weight which enable this technology to use in multiple devices. Lithium Iron Phosphate Cylindrical Cells Cylindrical cells one of the most widely used lithium ion battery shapes ...

[Learn More](#)



[Learn More](#)



[Thermal Modelling and Temperature Estimation of a ...](#)

The present study aims at the thermal modelling of a 3.3 Ah cylindrical 26650 lithium iron phosphate cell using ANSYS 2024 R1 software.

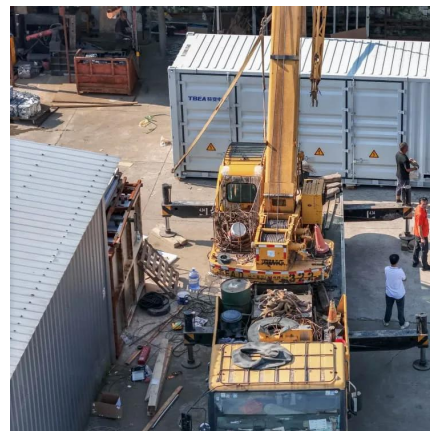
[Learn More](#)



Prismatic vs Cylindrical LiFePO₄ Cells in ESS , NAZ Solar Electric

Date Published: February 15, 2024 LiFePO₄ Cell Theory, Prismatic vs Cylindrical Cells Lithium Iron Phosphate (LiFePO₄) batteries have become increasingly popular for residential and ...

[Learn More](#)



Advantages and disadvantages of cylindrical lithium iron phosphate

1. The unity of the monomer is better. Cylindrical lithium batteries have long established a series of internationally unified standard specifications and models, and the processing technology is ...

[Learn More](#)



Time-Domain Modeling of a Cylindrical Lithium Iron



Phosphate ...

This study introduces a modeling approach for the transient response of batteries against fast-front impulse currents. An experimental methodology is presented to allow time ...

[Learn More](#)



[Lithium Iron Phosphate Battery Solar: Complete 2025 Guide](#)

Lithium iron phosphate batteries use lithium iron phosphate (LiFePO_4) as the cathode material, combined with a graphite carbon electrode as the anode. This specific ...

[Learn More](#)



[LiFe-Shenzhen Melasta Battery Co., Ltd](#)

These cells have high density and light weight which enable this technology to use in multiple devices. Lithium Iron Phosphate Cylindrical Cells Cylindrical cells one of the most ...

[Learn More](#)



[Prismatic vs Cylindrical LiFePO4 Cells in ESS](#)

Date Published: February 15, 2024 LiFePO_4 Cell Theory, Prismatic vs Cylindrical Cells Lithium Iron Phosphate (LiFePO_4) batteries have become increasingly popular for residential and commercial energy storage ...

[Learn More](#)



[What is Cylindrical Lithium Iron Phosphate Battery? Uses](#)



A Cylindrical Lithium Iron Phosphate battery is a type of lithium-ion battery characterized by its cylindrical shape, typically with dimensions like 18650 or 26650.

[Learn More](#)



Contact Us

For catalog requests, pricing, or partnerships, please visit:
<https://fundacjawandea-imk.pl>

Scan QR Code for More Information



<https://fundacjawandea-imk.pl>