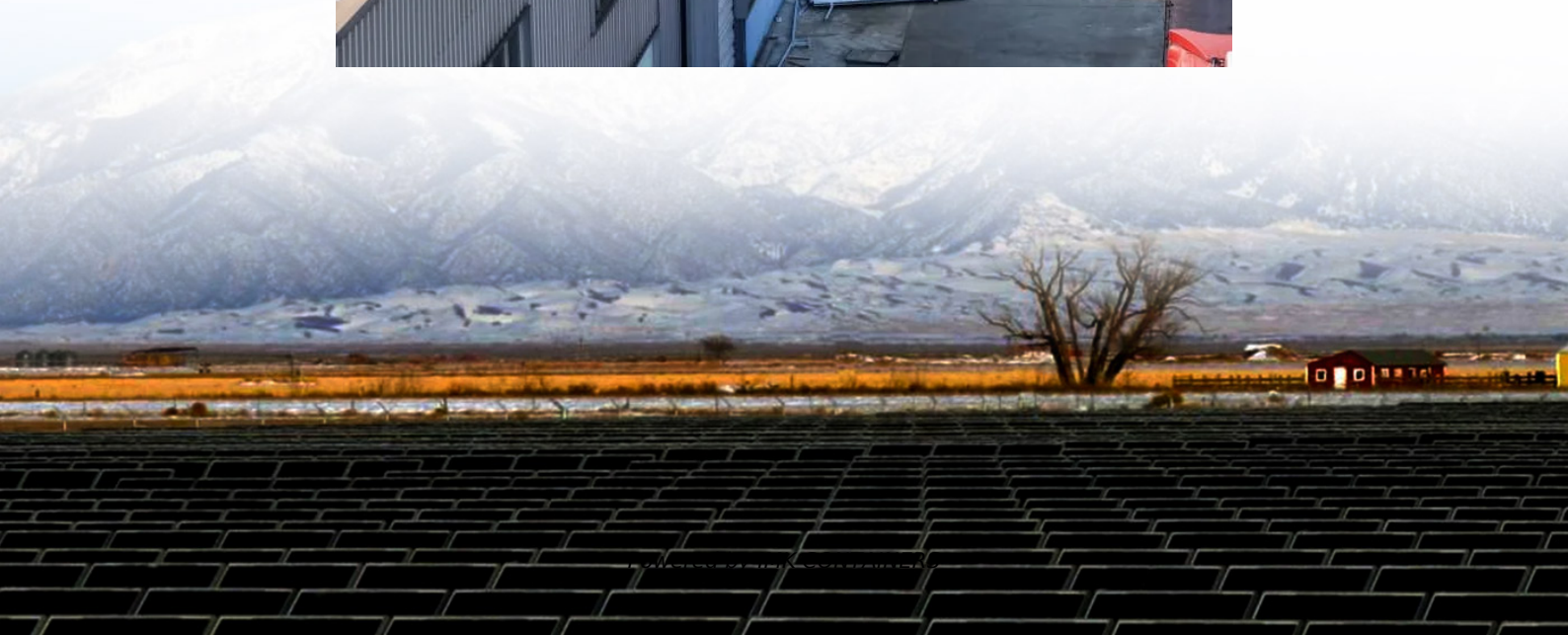


# Copenhagen Mobile Energy Storage Container 60kWh





## Copenhagen Mobile Energy Storage Container 60kWh

---



### **COPENHAGEN , Public Transport , Page 67 , SkyscraperCity ...**

Copenhagen's new light rail system inaugurated - Urban Transport Magazine It has been 53 years since a tram last ran in Denmark's capital Copenhagen, but now the time ...

[Learn More](#)

### **Copenhagen**

Copenhagen (København) Wiki: Copenhagen is the capital of Denmark and its most populous city, with an urban population of 1,213,822 (as of 1 January 2012) and a metropolitan ...

[Learn More](#)



### **[COPENHAGEN , Public Transport](#)**

Copenhagen's Metro is to begin running 24 hours a day, seven days a week, closing a four hour gap on weekdays during which the underground railway closes. The new ...

[Learn More](#)



### **Ring 3 , Light Rail**

Greater Copenhagen Light Rail Ring 3 The construction law about the greater Copenhagen Light Rail has been unanimously adopted in Folketinget the 31st of May 2016. ...

[Learn More](#)



### [The BIG HUGE Copenhagen Ørestad Thread , Projects & amp](#)

The BIG HUGE Copenhagen Ørestad Thread , Projects & Construction Jump to Latest 1.7M views 7.4K replies 238 participants last post by Hafnia Nov 3, 2025 tournesol ...

[Learn More](#)



### [City Circle + Harbour Line \(M3+M4\) , Metro](#)

City Circle Line M3 + M4 Diagram of the new lines Two parallel tunnels of approx. 15.5 km (33 km). The Circle Line(s) wil serve 18 underground stations and one elevated ...

[Learn More](#)



### [Nordhavnen , Northern Docklands](#)

The North Harbour of Copenhagen, in danish Københavns Nordhavn was synonym with the heavy industry in the Port of Copenhagen, has gradually disappeared, but at ...

[Learn More](#)



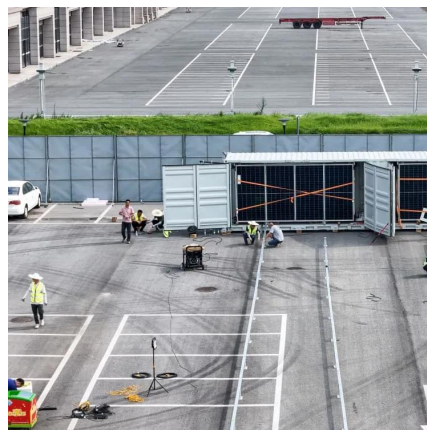




### [Renewal of Copenhagen Central St.](#)

Copenhagen Central Station is set for a (long overdue) major renovation. The overhaul will include removing half of the existing shop pavilions to create a more open space, ...

[Learn More](#)



### [Then and Now . Copenhagen in pictures](#)

The city of Copenhagen is physically changing and expanding, and sometime it feels good and funny to remember how things used to be, and how they looked like before.

[Learn More](#)



### **M5 , Metro**

Copenhagen Central - Christianshavn - some point at the M5, ie Prags Boulevard - Malmö North - Malmö Central. After All, there Are still around 20 km between the two cities so ...

[Learn More](#)



## **Contact Us**

---

For catalog requests, pricing, or partnerships, please visit:  
<https://fundacjawandea-imk.pl>



## Scan QR Code for More Information



<https://fundacjawandea-imk.pl>