

# Copenhagen Energy Storage Container





## Copenhagen Energy Storage Container

---



### [City Circle + Harbour Line \(M3+M4\) , Metro](#)

City Circle Line M3 + M4 Diagram of the new lines Two parallel tunnels of approx. 15.5 km (33 km). The Circle Line(s) wil serve 18 underground stations and one elevated ...

[Learn More](#)

### [COPENHAGEN , Public Transport](#)

Copenhagen's Metro is to begin running 24 hours a day, seven days a week, closing a four hour gap on weekdays during which the underground railway closes. The new ...

[Learn More](#)



### [Renewal of Copenhagen Central St.](#)

Copenhagen Central Station is set for a (long overdue) major renovation. The overhaul will include removing half of the existing shop pavilions to create a more open space, ...

[Learn More](#)



### **M5 , Metro**

Copenhagen Central - Christianshavn - some point at the M5, ie Prags Boulevard - Malmö North - Malmö Central. After All, there Are still around 20 km between the two cities so ...

[Learn More](#)



### Ring 3 , Light Rail

Greater Copenhagen Light Rail Ring 3 The construction law about the greater Copenhagen Light Rail has been unanimously adopted in Folketinget the 31st of May 2016. ...

[Learn More](#)



### [Nordhavnen , Northern Docklands](#)

The North Harbour of Copenhagen, in danish Københavns Nordhavn was synonym with the heavy industry in the Port of Copenhagen, has gradually disappeared, but at ...

[Learn More](#)



### [The BIG HUGE Copenhagen Ørestad Thread , Projects & amp](#)

The BIG HUGE Copenhagen Ørestad Thread , Projects & Construction Jump to Latest 1.7M views 7.4K replies 238 participants last post by Hafnia Nov 3, 2025 tournesol ...

[Learn More](#)



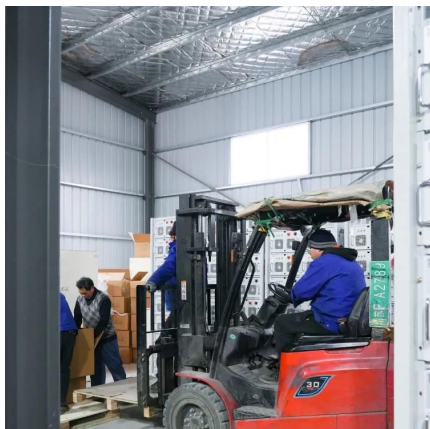




## **COPENHAGEN , Public Transport , Page 67 , SkyscraperCity ...**

Copenhagen's new light rail system inaugurated - Urban Transport Magazine It has been 53 years since a tram last ran in Denmark's capital Copenhagen, but now the time ...

[Learn More](#)



### **Copenhagen**

Copenhagen (København) Wiki: Copenhagen is the capital of Denmark and its most populous city, with an urban population of 1,213,822 (as of 1 January 2012) and a metropolitan ...

[Learn More](#)

### Then and Now , Copenhagen in pictures

The city of Copenhagen is physically changing and expanding, and sometime it feels good and funny to remember how things used to be, and how they looked like before.

[Learn More](#)



## **Contact Us**

---

For catalog requests, pricing, or partnerships, please visit:  
<https://fundacjawandea-imk.pl>



## Scan QR Code for More Information



<https://fundacjawandea-imk.pl>