

Communication green base station sdh energy equipment





Overview

What is a low-carbon base station?

(A) The low-carbon base station consists of a power converter, power grid, photovoltaic, energy storage battery, and base station. The low-carbon base station system maintains communication with the control cloud platform and the micro base station.

Can low-carbon communication base stations improve local energy use?

Therefore, low-carbon upgrades to communication base stations can effectively improve the economics of local energy use while reducing local environmental pollution and gaining public health benefits. For this research, we recommend further in-depth exploration in three areas for the future.

How does a base station work?

In this scheme, the base station is powered by solar panels, the electrical grid, and energy storage units to ensure the stability of energy supply. When there is a surplus of energy supply, the excess electricity generated by the solar panels is stored in the energy storage units.

Can a low-carbon base station improve public health?

The results of this study indicate that low-carbon upgrades of base stations can not only significantly reduce the operational costs and carbon emissions of communication systems but also reduce pollution and bring considerable public health benefits. However, this transformation still needs to overcome multidimensional challenges.



Communication green base station sdh energy equipment



Communication Base Station Green Energy , Huijue Group E ...

As global telecom networks expand exponentially, how can communication base station green energy solutions address the sector's mounting carbon footprint? With over 7 million cellular ...

[Learn More](#)



Remake Green 5G

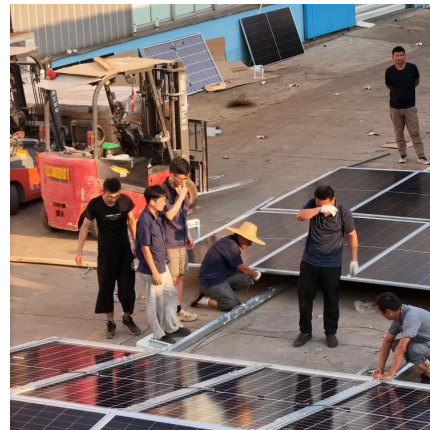
The Ministry of Industry and Information Technology issued the " Action Plan for Green and Low-Carbon Development of the Information and Communication Industry (2022 ...

[Learn More](#)

Communication site photovoltaic energy storage renovation ...

This project retrofits communication base stations with on-site photovoltaic energy storage, transforming traditional communication base stations into smart base stations powered by ...

[Learn More](#)



[Integrated Solar-Wind Power Container for Communications](#)

This large-capacity, modular outdoor base station seamlessly integrates photovoltaic, wind power, and energy storage to provide a stable DC48V power supply and optical distribution. Perfect ...

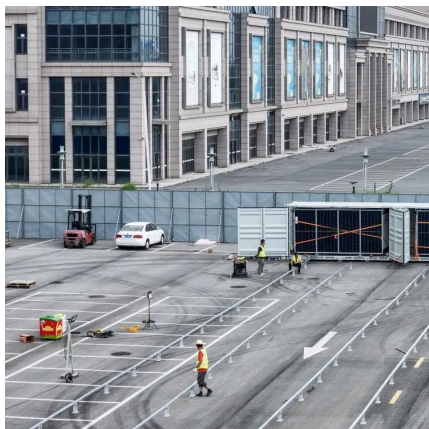
[Learn More](#)



Low-carbon upgrading to China's communications base stations ...

As China rapidly expands its digital infrastructure, the energy consumed by communication base stations has grown dramatically. Traditionally powered by coal ...

[Learn More](#)



[Low-carbon upgrading to China's communications base ...](#)

SCIENCE FOR SOCIETY As China rapidly expands its digital infrastructure, the energy consumed by communication base stations has grown dramatically. Traditionally ...

[Learn More](#)



[Shanghai 8.8KW Communication site photovoltaic energy ...](#)

The Shanghai Fengxian Tower-Qinhua Station renovation project transforms traditional communication base stations into intelligent, renewable energy-powered facilities using on-site ...

[Learn More](#)



[TU Energy Storage Technology \(Shanghai\) ...](#)



Comm backup power storage Uninterruptible power supply (UPS) is the last line of defense to ensure the safe and stable operation of the key equipment of the communication base station. There are many stringent ...

[Learn More](#)



[TU Energy Storage Technology \(Shanghai\) Co., Ltd](#)

Comm backup power storage Uninterruptible power supply (UPS) is the last line of defense to ensure the safe and stable operation of the key equipment of the communication base station. ...

[Learn More](#)



[Our communication green base station](#)

The green base station solution involves base station system architecture, base station form, power saving technologies, and application of green technologies. Using SDR ...

[Learn More](#)



[Shanghai 8.8KW Communication site ...](#)

The Shanghai Fengxian Tower-Qinhuo Station renovation project transforms traditional communication base stations into intelligent, renewable energy-powered facilities using on-site photovoltaic (PV) energy storage.

[Learn More](#)

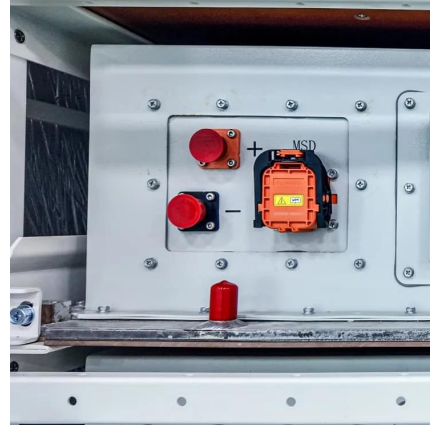


[China Mobile - Renewable energy and green base station ...](#)



In 2024, nearly 60,000 minimalist base stations were deployed. 3. Research on low-carbon energy technologies for communication sites: in 2024, China Mobile advanced ...

[Learn More](#)



Contact Us

For catalog requests, pricing, or partnerships, please visit:
<https://fundacjawandea-imk.pl>

Scan QR Code for More Information



<https://fundacjawandea-imk.pl>