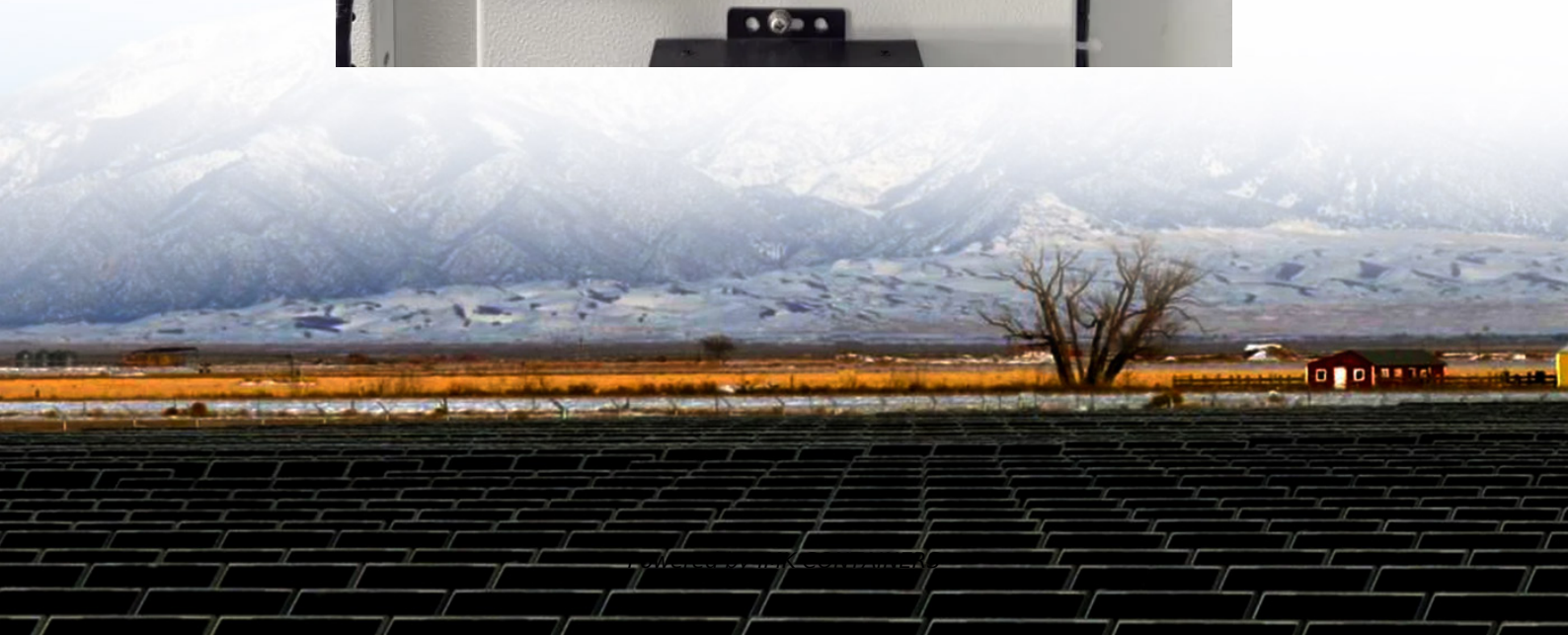


Communication What does 5g base station sharing mean





Overview

What is a base station in a 5G network?

Base stations are the backbone of wireless networks, facilitating communication between mobile devices and the network infrastructure. In LTE (Long Term Evolution) networks, these base stations are known as eNodeBs (evolved Node Bs), while in 5G networks, they are referred to as gNodeBs (next-generation Node Bs).

What is network sharing in 5G?

Network sharing in 5G is becoming a popular alternative for mobile operators. If the network sharing is well planned and designed, it can enhance competition between operators and service providers, accelerate the deployment of new technologies, increase coverage, reduce the administrative work and operational costs.

What are the advantages of a 5G base station?

Massive MIMO: The use of a large number of antennas allows the base station to serve multiple users simultaneously by forming multiple beams and spatially multiplexing signals. Modulation Techniques: 5G base stations support advanced modulation schemes, such as 256-QAM (Quadrature Amplitude Modulation), to achieve higher data rates.

Why is core network sharing less common than 5g?

Core network sharing is less common. Even core network sharing would provide further savings, limited possibilities to differentiate services and strategy decrease its attractiveness from operator perspective. 5G networks are expected to incur a higher cost of deployment to meet throughput requirement and demand and to provided sufficient coverage.



Communication What does 5g base station sharing mean



What Is a Base Station? Exploring the Core of 5G Networks ...

Base stations are the core of mobile communication, and with the rise of 5G, thermal and energy challenges are increasing. This article explains the definition, structure, ...

[Learn More](#)

[What is a 5G base station?](#)

In Summary, The 5g Base Station is a Critical Element of the 5g Wireless Network, Serving As the Between User Devices and the Core Network. IT Incorporate Advanced Technologies Like Massive Mimo, ...

[Learn More](#)



[What is a 5G Base Station?](#)

As the world continues its transition into the era of 5G, the demand for faster and more reliable wireless communication is skyrocketing. Central to this transformation are 5G ...

[Learn More](#)



[What is a 5G base station?](#)

In Summary, The 5g Base Station is a Critical Element of the 5g Wireless Network, Serving As the Between User Devices and the Core Network. IT Incorporate Advanced ...

[Learn More](#)



[What is 5G Base Station?](#)

A 5G base station, also known as a 5G NodeB (gNB) in the 3GPP (3rd Generation Partnership Project) standards, is a radio access point that connects user equipment (such as 5G - ...

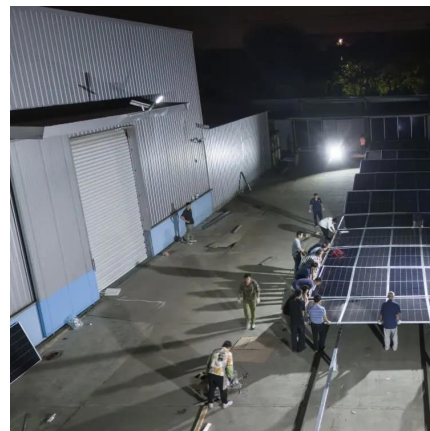
[Learn More](#)



base station in 5g

A 5G base station is a complex system that integrates advanced RF technology, digital signal processing, and network architecture to deliver high-performance wireless ...

[Learn More](#)



Understanding the role of base stations (gNB vs eNB) in 5G ...

Base stations are the backbone of wireless networks, facilitating communication between mobile devices and the network infrastructure. In LTE (Long Term Evolution) ...

[Learn More](#)



Complete Guide to 5G Base Station Construction , Key



Steps, ...

Explore how 5G base stations are built--from site planning and cabinet installation to power systems and cooling solutions. Learn the essential components, technologies, and ...

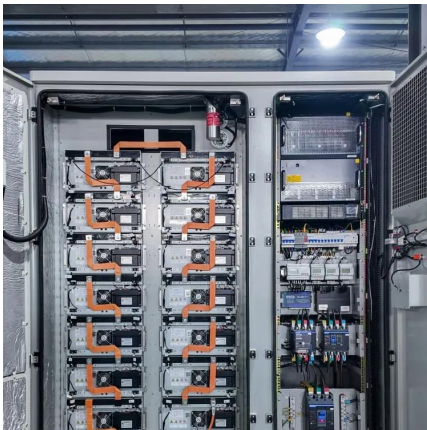
[Learn More](#)



base station in 5g

A 5G base station is a complex system that integrates advanced RF technology, digital signal processing, and network architecture to deliver high-performance wireless communication in the 5G era.

[Learn More](#)



What is a 5G Base Station?

As the world continues its transition into the era of 5G, the demand for faster and more reliable wireless communication is skyrocketing. Central to this transformation are 5G base stations, the backbone of the ...

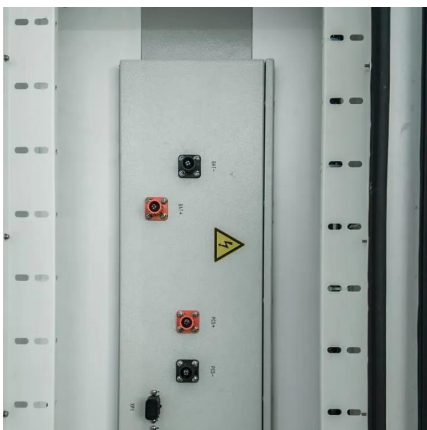
[Learn More](#)



[Learn What a 5G Base Station Is and Why It's Important](#)

A 5G base station is the heart of the fifth-generation mobile network, enabling far higher speeds and lower latency, as well as new levels of connectivity. Referred to as ...

[Learn More](#)



[Complete Guide to 5G Base Station...](#)



Explore how 5G base stations are built--from site planning and cabinet installation to power systems and cooling solutions. Learn the essential components, technologies, and challenges behind 5G ...

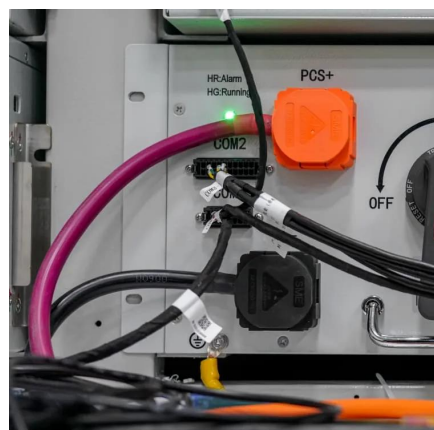
[Learn More](#)



[What is 5G Base Station?](#)

A 5G base station, also known as a 5G NodeB (gNB) in the 3GPP (3rd Generation Partnership Project) standards, is a radio access point that connects user equipment (such as 5G - enabled smartphones, tablets, ...

[Learn More](#)



[Types of 5G NR Base Stations: A Comprehensive Overview](#)

Understanding these base stations helps network operators and businesses optimize 5G deployment strategies to meet diverse connectivity needs. As 5G continues to ...

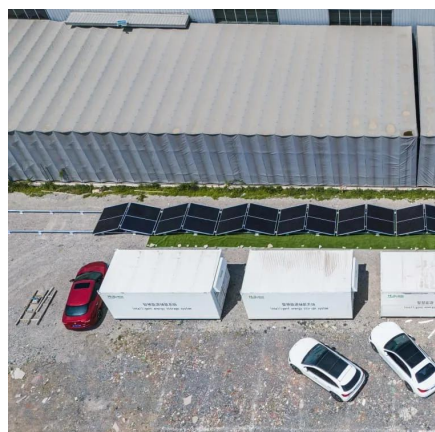
[Learn More](#)



[Types of 5G NR Base Stations: A...](#)

Understanding these base stations helps network operators and businesses optimize 5G deployment strategies to meet diverse connectivity needs. As 5G continues to evolve, advancements in base ...

[Learn More](#)

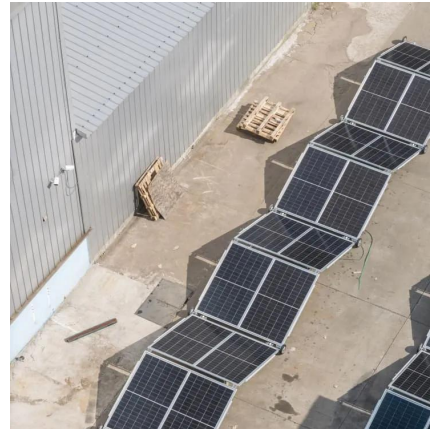


[Network sharing in 5G](#)



In Active sharing, operators share active network elements, typically radio access network equipment, like base stations and controllers, but sometimes also core network equipment.

[Learn More](#)



Contact Us

For catalog requests, pricing, or partnerships, please visit:
<https://fundacjawandea-imk.pl>

Scan QR Code for More Information



<https://fundacjawandea-imk.pl>