

Car-connected battery inverter





Overview

What is a car battery inverter?

A car battery inverter serves one main purpose: it allows you to use standard wall plugs in your vehicle. Think of it as a mini power station in your car. When you connect the inverter to your cigarette lighter port or directly to the car battery, it steps up and converts that 12V DC into usable 110V or 120V AC power—depending on where you live.

How do I connect a power inverter to my car battery?

To connect a power inverter to your car battery, you will need the following tools and materials: A power inverter that meets your power needs. A cable that can handle the power requirements of your inverter. A fuse holder and fuse that matches the cable and inverter specifications. A wrench or socket is set to tighten the cable connections.

Can a high power inverter be used on a car battery?

When using a high power inverter, it may be necessary to consider a battery with additional deep cycles to ensure that the car battery is not damaged by continuous discharge. For standard automotive batteries, it is recommended that inverter power not exceed 600 watts for safety and battery life.

Can a 12 volt car battery support a high power inverter?

Typically, a 12-volt car battery can support an inverter with a power range of about 150 watts to 1500 watts. Please note, however, that car batteries are not suitable for driving high power inverters for extended periods of time, which may cause damage to the battery.



Car-connected battery inverter



8 Best Power Inverters for Car Batteries in 2025 , Car Battery ...

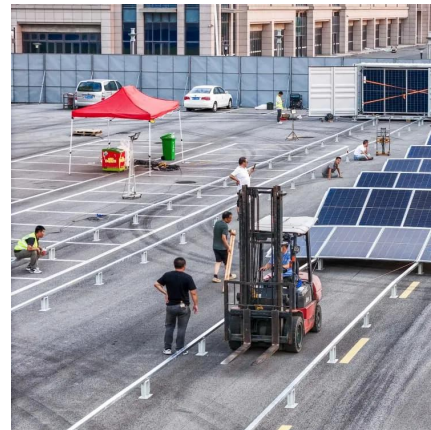
Power inverters convert car battery power into usable AC electricity. They let you run devices like laptops, phones, and small appliances on the go. Choosing the best power ...

[Learn More](#)

[Power Inverter for Car: What It Is and Why ...](#)

Car inverters can connect through the 12V cigarette lighter socket for light loads or directly to the battery for higher wattage needs. Some advanced models function like an inverter with battery charger (UPS), ...

[Learn More](#)



[Best Car Battery Inverters for Reliable Power on the Go](#)

When you need to convert your car battery's 12V DC power to usable 110V AC power, a quality inverter is essential. Whether for camping, road trips, or emergency use, ...

[Learn More](#)



[Power Inverter for Car: What It Is and Why You Need One](#)

Car inverters can connect through the 12V cigarette lighter socket for light loads or directly to the battery for higher wattage needs. Some advanced models function like an ...



[Learn More](#)



[Best Power Inverter for Car Battery - Stay Powered Up](#)

Charge devices on the go with a car battery inverter. Learn what to buy, how to use it, and stay powered during trips or emergencies.

[Learn More](#)



Connecting a Power Inverter Directly to a Car Battery: Pros, ...

Yes, you can use a car battery to power a power inverter. However, deep cycle 12-volt lead acid batteries are safer than starting batteries. Deep cycle

[Learn More](#)



[Best Car Battery Inverters for Reliable Power ...](#)

When you need to convert your car battery's 12V DC power to usable 110V AC power, a quality inverter is essential. Whether for camping, road trips, or emergency use, these inverters provide power to laptops, ...

[Learn More](#)

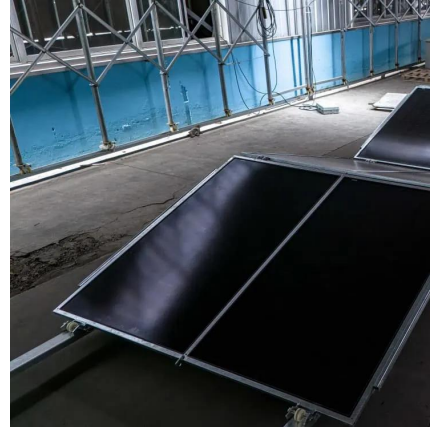




[How to Connect Power Inverter to Car Battery](#)

Learn how to connect a power inverter to a car battery with our easy-to-follow step-by-step guide. Keep your devices powered on the go.

[Learn More](#)



[How Big of an Inverter Can My Car Battery ...](#)

When considering connecting an inverter to your car battery, the first question we need to clarify is: how much power can your car battery actually support an inverter? Typically, a 12-volt car battery can support ...

[Learn More](#)

[Best Inverter For Car Battery \[Updated: December 2025\]](#)

The landscape for car inverters changed dramatically when powerful, multi-use models entered the scene. After hands-on testing all these options, I can tell you that the ...

[Learn More](#)



[Inverter for Car: Everything You Need to Know Before You ...](#)

Power up on the go with an inverter for car--discover how to use it safely, what to run, and how to protect your battery. A must-read for every driver!

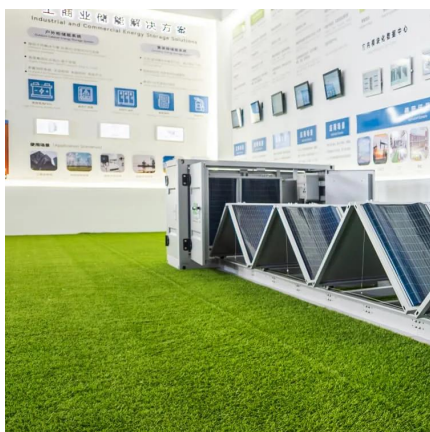
[Learn More](#)



9 Best Car Power Inverters

Car power inverters are great for a life on the road. Depending on power capacity, they can run phones, computers, or even small appliances right from your car.

[Learn More](#)



How Big of an Inverter Can My Car Battery Handle?

When considering connecting an inverter to your car battery, the first question we need to clarify is: how much power can your car battery actually support an inverter? Typically, ...

[Learn More](#)

Contact Us

For catalog requests, pricing, or partnerships, please visit:
<https://fundacjawandea-imk.pl>

Scan QR Code for More Information



<https://fundacjawandea-imk.pl>