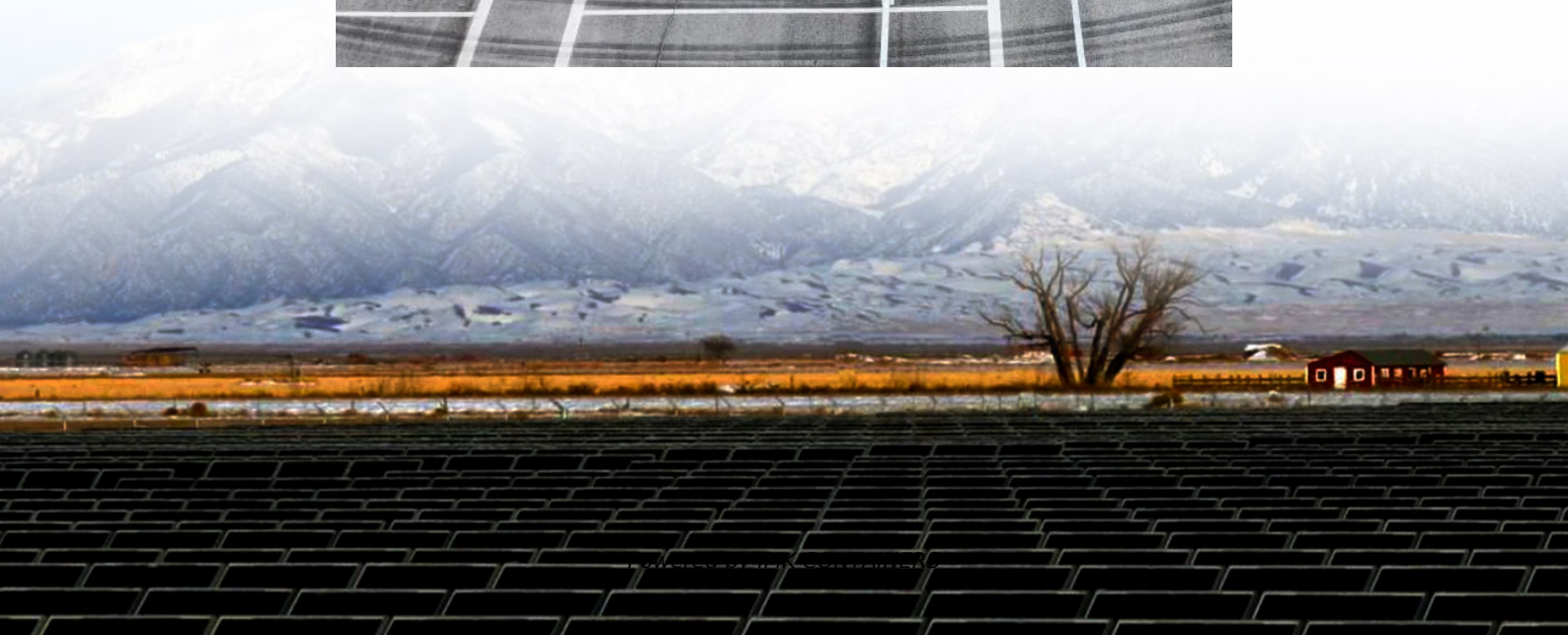
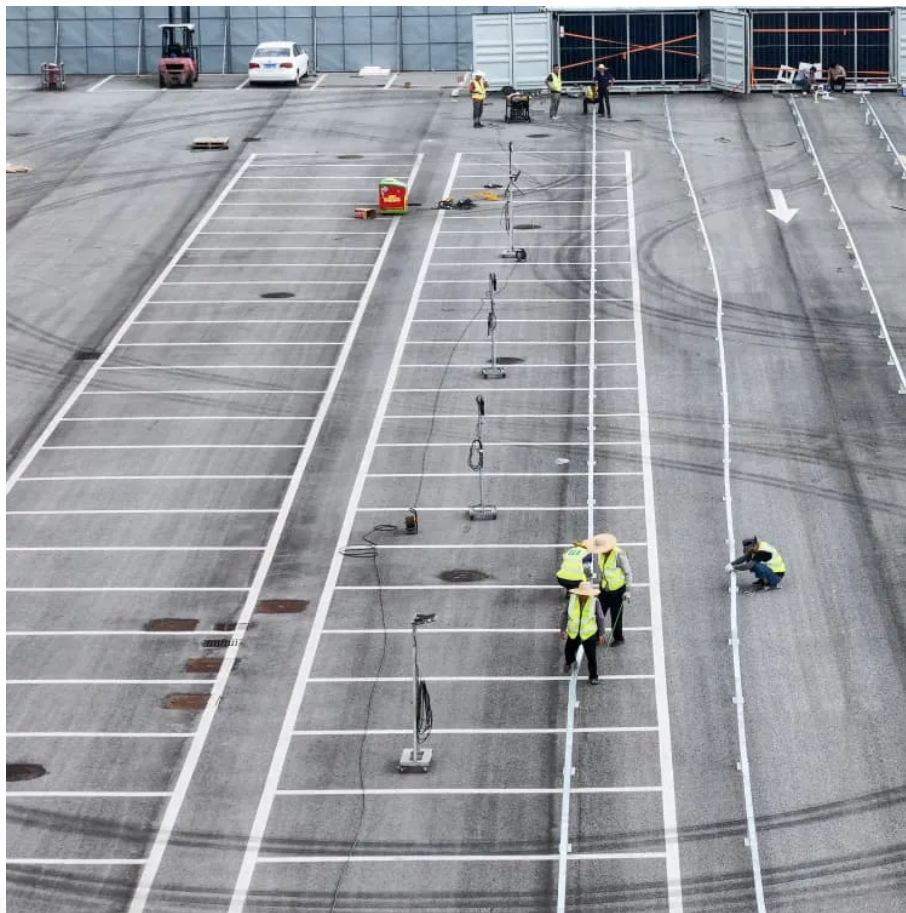


Can lithium batteries be used with a 220v inverter





Overview

Does a lithium battery work with a solar inverter?

While lithium batteries can't work with every inverter, most modern solar and off-grid inverters now offer lithium compatibility. For optimal performance in home energy stems, choose an inverter specifically designed for lithium battery or LiFePO4 battery systems, and always verify compatibility before purchasing.

What is a lithium battery for inverter?

Lithium offers unmatched performance, a longer lifespan, and better efficiency than traditional batteries. Whether you're setting up a home backup system, solar power solution, or mobile energy unit, this guide will walk you through everything you need to know about lithium batteries for inverters. Part 1.

How do I choose a lithium battery for inverter use?

When selecting a lithium battery for inverter use, it is essential to understand the key specifications: Voltage (V): Most inverter systems use 12V, 24V, or 48V batteries. Higher voltage systems are more efficient for larger power loads. Capacity (Ah or Wh): Amp-hours or Watt-hours indicate how much energy the battery can store and deliver.

Which battery should I use for my inverter?

When it comes to powering your inverter, there are a few alternative options to consider aside from lithium batteries. While lithium batteries have gained popularity due to their numerous advantages, they may not be the right choice for everyone. One alternative option is lead-acid batteries.



Can lithium batteries be used with a 220v inverter



[Compatibility Analysis Between Lithium](#)

...

Ensuring compatibility between lithium batteries and inverters involves multi-dimensional coordination across electrical parameters, communication, and environmental conditions. GSL Energy delivers ...

[Learn More](#)

Understanding the Basics of Connecting Lithium Batteries to Inverters

Lithium batteries are widely used in energy storage systems due to their high efficiency, long life cycle, and light weight. Connecting a lithium battery to an inverter is crucial ...

[Learn More](#)



Compatibility Analysis Between Lithium Batteries and Inverters ...

Ensuring compatibility between lithium batteries and inverters involves multi-dimensional coordination across electrical parameters, communication, and environmental ...

[Learn More](#)



Hybrid Inverter and Lithium Batteries: Setup Guide and Best ...

set up communication between lithium batteries and a hybrid inverter with our detailed step-by-step guide. Ensure optimal performance and longevity of your energy storage system by ...



[Learn More](#)

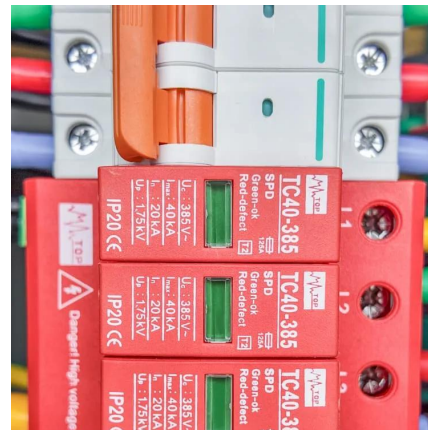


Understanding the Basics of Connecting

...

Lithium batteries are widely used in energy storage systems due to their high efficiency, long life cycle, and light weight. Connecting a lithium battery to an inverter is crucial for converting the stored DC (Direct ...

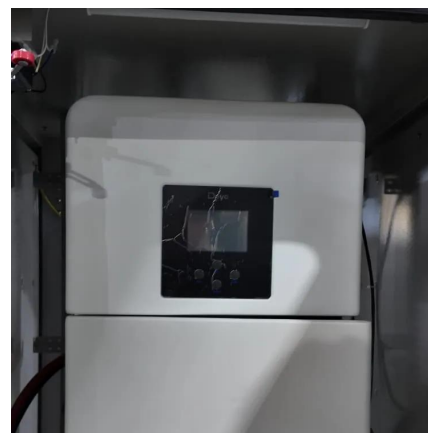
[Learn More](#)



Lithium Battery for Inverter: Pros, Specs, and Tips

Lithium batteries can be used in a wide range of inverter-powered systems: Home power backup: Provides energy during power outages and ensures critical appliances stay ...

[Learn More](#)



Do Lithium Batteries Need a Special Inverter? , IMPROVE BATTERY

Lithium batteries, including lithium-ion batteries and lithium iron phosphate (LiFePO4) batteries, don't necessarily require a special inverter specifically designed for ...

[Learn More](#)



Can I Connect Inverter to Lithium Battery?

Yes, you can connect an inverter to a lithium battery. Lithium batteries, particularly Lithium Iron Phosphate (LiFePO4) batteries, are well-suited for use with inverters due to their ...

[Learn More](#)



Can Lithium Batteries Work With Any Type of ...

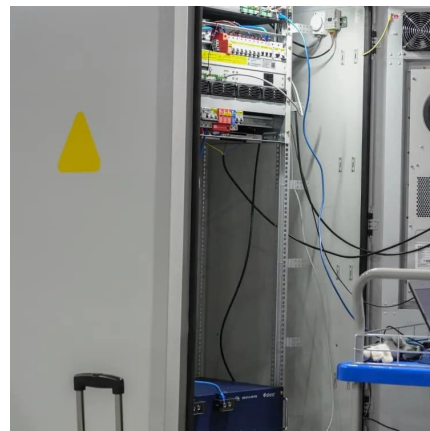
The Bottom Line While lithium batteries can't work with every inverter, most modern solar and off-grid inverters now offer lithium compatibility. For optimal performance in home energy stems, choose an ...

[Learn More](#)

Do Lithium Batteries Need a Special Inverter?

Lithium batteries, including lithium-ion batteries and lithium iron phosphate (LiFePO4) batteries, don't necessarily require a special inverter specifically designed for lithium batteries.

[Learn More](#)



Can Lithium Batteries Work With Any Type of Inverter?

The Bottom Line While lithium batteries can't work with every inverter, most modern solar and off-grid inverters now offer lithium compatibility. For optimal performance in home ...

[Learn More](#)



Compatibility of Lithium-Ion Batteries with Existing Inverters

Learn how to seamlessly integrate lithium-ion batteries with existing inverters for efficient and reliable power solutions. Maximize energy storage with Invertek Energy.

[Learn More](#)



Importance of Compatibility Between Inverter and Lithium Battery

Among these innovations, lithium batteries have emerged as the preferred choice for backup power due to their efficiency, longevity, and compact design. However, one key ...

[Learn More](#)



Can all inverters use lithium batteries?

Understanding Inverters and Batteries
Understanding Inverters and Batteries In order to grasp the compatibility between inverters and lithium batteries, it's important to have a ...

[Learn More](#)



Hybrid Inverter and Lithium Batteries: Setup ...

set up communication between lithium batteries and a hybrid inverter with our detailed step-by-step guide. Ensure optimal performance and longevity of your energy storage system by following best practices in configuration, ...

[Learn More](#)



[Compatibility of Lithium-Ion Batteries with ...](#)

Learn how to seamlessly integrate lithium-ion batteries with existing inverters for efficient and reliable power solutions. Maximize ...

[Learn More](#)



[Importance of Compatibility Between Inverter ...](#)

Among these innovations, lithium batteries have emerged as the preferred choice for backup power due to their efficiency, longevity, and compact design. However, one key factor that determines the overall ...

[Learn More](#)

[Lithium Battery for Inverter: Pros, Specs, and ...](#)

Lithium batteries can be used in a wide range of inverter-powered systems: Home power backup: Provides energy during power outages and ensures critical appliances stay running.

[Learn More](#)



Contact Us

For catalog requests, pricing, or partnerships, please visit:
<https://fundacjawandea-imk.pl>



Scan QR Code for More Information



<https://fundacjawandea-imk.pl>