

Can a 72v inverter be used when plugged into a 60v





Can a 72v inverter be used when plugged into a 60v



[What Happens If a 72V Inverter Is Used at 60V Key Risks ...](#)

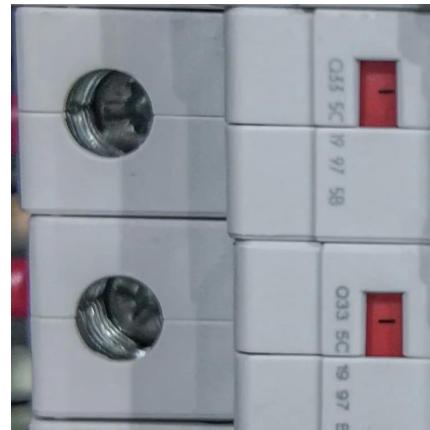
Understanding Voltage Mismatch in Power Systems Using a 72V inverter at 60V is like trying to run a car engine on low-octane fuel--it might work temporarily, but long-term consequences ...

[Learn More](#)

[What Happens If a 60V Inverter Is Used with a 72V Power ...](#)

Summary: Using a 60V inverter with a 72V power source can lead to overheating, reduced efficiency, or permanent damage. This article explores the risks, practical solutions, and ...

[Learn More](#)



[Can a 72V Inverter Be Powered by 60V Key Considerations](#)

Why Voltage Matching Matters Efficiency Loss: A 72V inverter running on 60V may struggle to reach peak performance, wasting up to 20% of its capacity. Safety Risks: Undervoltage can ...

[Learn More](#)



[WHAT HAPPENS IF A 72V INVERTER IS USED AT 60V KEY RISKS](#)

The 220V to 380V three phase inverter uses DC-AC mode and SPWM modulation control technology to convert 220V direct current into 380V alternating current three phase power, ...



[Learn More](#)



[Can a 72V Inverter Be Powered by 60V Key Considerations ...](#)

Exploring voltage compatibility for inverters in renewable energy systems and industrial applications. Understanding Voltage Compatibility in Inverters When working with power ...

[Learn More](#)



[CAN A 72V INVERTER WORK WITH A 60V BATTERY KEY ...](#)

Can a 72v inverter be connected to a 60v battery
Yes, a 60V inverter can technically use a 72V battery, but there are important considerations. While the inverter may operate with the higher ...

[Learn More](#)



[CAN A 72V INVERTER BE POWERED BY 60V KEY ...](#)

AC DC PWM inverter This document describes inverter circuits used for motor control and other applications, focusing on PWM control. It also describes the differences between two-phase ...

[Learn More](#)

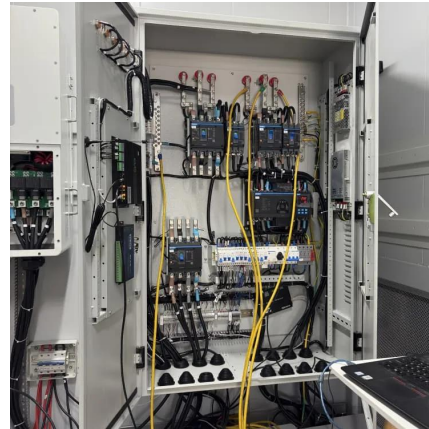




CAN A 72V INVERTER BE CONNECTED TO A 60V

60v inverter installed to 72v battery Using a 60V battery on a 72V motor is not recommended. While the motor might run, it won't perform well due to low voltage, leading to less power and ...

[Learn More](#)



Can a 72V Inverter Work with a 60V Battery Key Factors ...

If you're working with solar power setups, electric vehicles, or off-grid energy storage, you've probably wondered: Can a 72V inverter safely handle a 60V battery? This question matters to ...

[Learn More](#)

Can a 72v inverter be connected to a 60v

A standard 60V controller may not handle a 72V input effectively; doing so could lead to overheating or failure of the controller components. Always check manufacturer specifications ...

[Learn More](#)



Contact Us

For catalog requests, pricing, or partnerships, please visit:
<https://fundacjawandea-imk.pl>



Scan QR Code for More Information



<https://fundacjawandea-imk.pl>