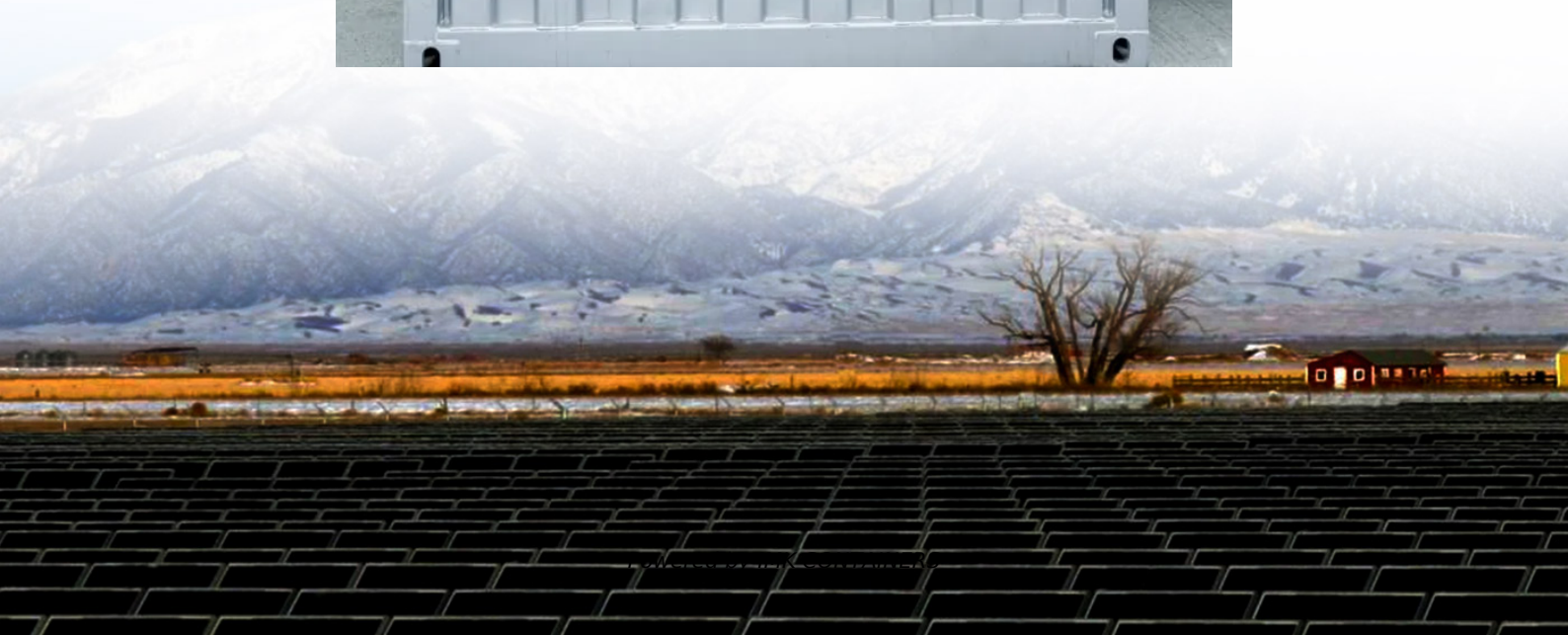


Can a 60v inverter use a 48v battery





Overview

Can a 60V battery power a 48V motor?

A 48V motor is designed to handle 48 volts of electrical input. When considering using a 60V battery on a 48V motor, compatibility is an important factor.

Does a 48v battery work with a 5000W inverter?

A 48V 100Ah lithium battery (4.8kWh) paired with a 5000W inverter works because $48V \times 100Ah \times 1C = 4800W$. Always account for inverter efficiency losses (typically 85-95%). For mixed AC/DC loads, sum the wattage of all devices that might run simultaneously and add a 20% buffer.

Can a 60V battery be used on a 48V motor?

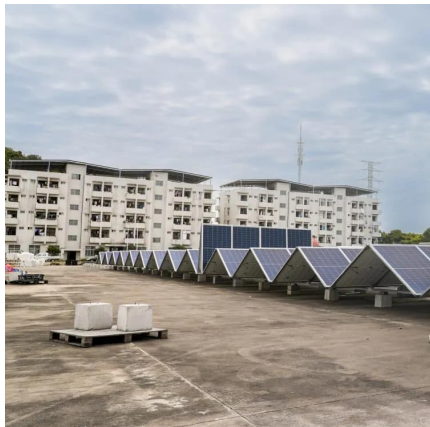
Using a 60V battery on a 48V motor can pose some risks and safety concerns. One of the main risks is the potential for overheating. The motor may not be able to handle the increased power, leading to excessive heat generation.

Should I use a 60V to 48V converter?

If you want to use all the remaining cells a "dc to dc converter 60V to 48V" would do just that. However they are hard to get for that voltage and high amps. if your controller can take 60v it will be fine just keep an eye on motor temps and avoid WOT if you find it gets hot Dana Point So. Cal It's. Best to have one big battery.



Can a 60v inverter use a 48v battery



[6 Volt Battery to 48 Volt Battery Charge Chart - self2solar](#)

Discover our detailed 6 Volt Battery to 48 Volt Battery Charge Chart. Understanding the difference between lead acid and lithium ion battery, in terms of cost, ...

[Learn More](#)

48V systems: Design considerations for a typical auxiliary ...

BLDCs are highly efficient motors and a good fit for battery e-load applications. They require a six-transistor inverter for the power stage (see Figure 1). The power bus ...

[Learn More](#)



[How to use a 60v battery pack on 48v motor](#)

Hello everyone :D, I have a 60v battery pack and I wanted to use it on a 48v motor without burning the motor. What options do i have? How can i step it down? will it burn the ...

[Learn More](#)



[Do I need a special inverter for a lithium battery?](#)

Lithium batteries require inverters specifically designed for their voltage range and discharge characteristics. While lead-acid systems allow voltage adjustments by removing battery cells,



...

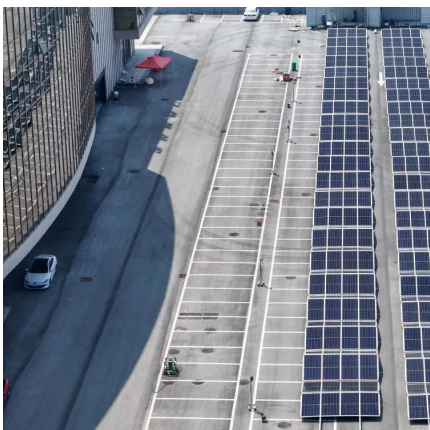
[Learn More](#)



Can I just hook a 48V battery to a IQ7 inverter. I have a ...

The way I want to do this is use a BIG 48V agnostic battery, with a BMS that controls high and low voltage as well as temperature cut outs, and attach a couple of IQ7 inverters to it.

[Learn More](#)



[6 Volt Battery to 48 Volt Battery Charge Chart ...](#)

Discover our detailed 6 Volt Battery to 48 Volt Battery Charge Chart. Understanding the difference between lead acid and lithium ion battery, in terms of cost, performance and life span.

[Learn More](#)



Are 48v AIO inverter Charges viable for small battery/solar ...

If 60v is still a challenge, think about the Growatt 24v 3kw or the PowMr 24v 3.2kw units. They only need 30v to start working and a 24v battery is about half the physical space of ...

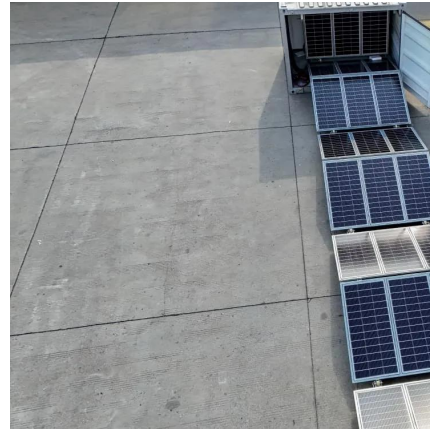
[Learn More](#)



[Can a 60v inverter use a 48v battery](#)

Can a 48 volt inverter run a battery? When you use a 48-Volts inverter, you can use regular and more flexible connectors to connect the inverter to the battery bank. This is so because the ...

[Learn More](#)



48V Inverter: The Ultimate Guide to Efficient and Scalable ...

Unlock efficient power solutions with a 48V inverter--perfect for solar, off-grid, and backup systems. Learn how to choose the best one for your needs now!

[Learn More](#)



[How to use a 60v battery pack on 48v motor](#)

Hello everyone :D, I have a 60v battery pack and I wanted to use it on a 48v motor without burning the motor. What options do i have? How can i step it down? will it burn the motor in the first place? The motor ...

[Learn More](#)



[Is it permissible to use a 60V battery with a 48V motor?](#)

Efficiency Losses: Operating a 48V motor at 60V may lead to inefficiencies, especially if the motor is not designed for such high speeds. This inefficiency can result in ...

[Learn More](#)



Can an Inverter Be Too Big for Your Battery System?

A 48V 100Ah lithium battery (4.8kWh) paired with a 5000W inverter works because $48V \times 100Ah \times 1C = 4800W$. Always account for inverter efficiency losses (typically 85-95%).

[Learn More](#)



Contact Us

For catalog requests, pricing, or partnerships, please visit:
<https://fundacjawandea-imk.pl>

Scan QR Code for More Information



<https://fundacjawandea-imk.pl>