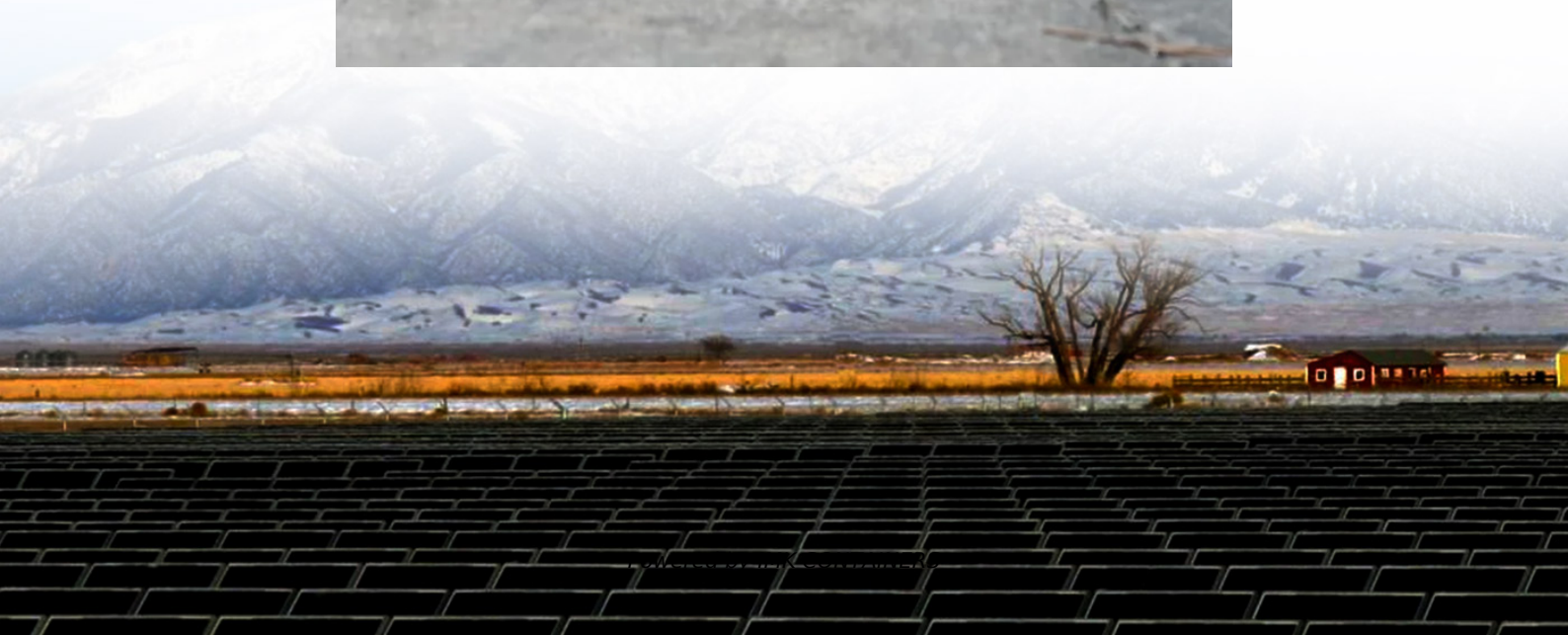


# Can a 24v inverter be plugged into a 12v power supply





## Overview

---

Can I use a 24V inverter on a 12V battery?

In conclusion, using a 24V inverter on a 12V battery is not advisable due to voltage mismatch, power limitations, and safety hazards. For a successful solar energy system, it's essential to use components that are compatible with each other, ensuring optimal performance and longevity.

Should I upgrade my battery system to a 24V inverter?

If you have your heart set on a 24V inverter, consider upgrading your battery system to a 24V configuration. While this may involve some additional investment, it can significantly enhance the performance of your solar power setup.

Can a 12V solar panel use a 24V inverter?

A 12V solar panel must use with a 12V inverter and a 24V solar panel must use with a 24V inverter. On top of that a series connection is required to maintain the same voltage between the battery, inverter and the solar panel. Check out 12V, 24V and 48V inverters [here](#). To keep things simple, just remember to keep the voltage the same.

How many watts a 12V Inverter should I use?

If you need less than 1000 watts, a 12V inverter will do. If you require between 1000 to 3000 watts, it is best to use a 24V inverter. For power requirements greater than 3000 watts, 48V inverters are recommended. To put it another way, if the demand goes exceeds 140 amps you should opt for 48V.



## Can a 24v inverter be plugged into a 12v power supply

---



### [How To Get 12 Volts From a 24 Volt System](#)

A buck converter is a type of DC-DC converter that steps down voltage from a higher level (24V) to a lower level (12V) while attempting to maintain efficiency. It works by ...

[Learn More](#)

### [Can I Use 24V Inverter with 12V Battery](#)

Wondering if a 24V inverter can be used with a 12V battery? Learn the truth and explore key considerations before making your decision.

[Learn More](#)



### **Can I Use A 24V Inverter With A 12V Battery? Compatibility ...**

Using a 24V inverter with a 12V battery is not recommended. This voltage mismatch can create power limitations and pose safety hazards. For an effective solar energy system, ...

[Learn More](#)



### [Basic: Can I Use a 24V Inverter in a 12v Solar ...](#)

Conclusion In conclusion, using a 24V inverter on a 12V battery is not advisable due to voltage mismatch, power limitations, and safety hazards. For a successful solar energy system, it's essential to use ...



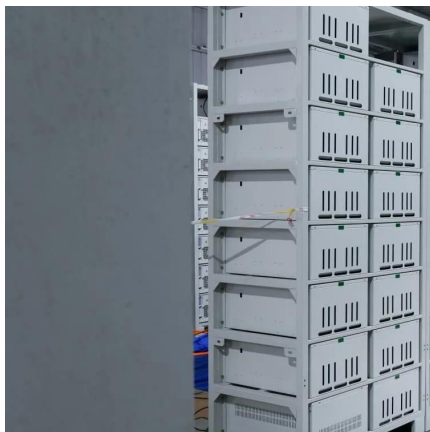
[Learn More](#)



[Can I Run a 12V Inverter on a 24V Battery?](#)

Application Scenario: Provide power support in a small store or temporary work site. System Options: Inverter: Use a high power 12V inverter with 2000W and above to support the operation of multiple ...

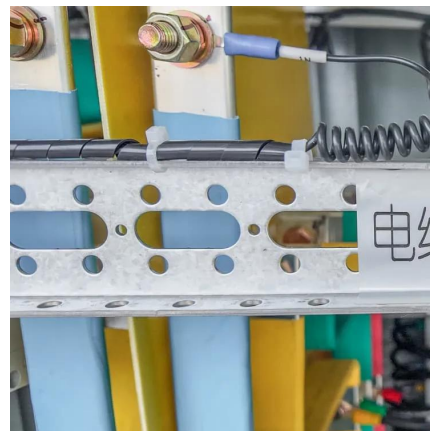
[Learn More](#)



**Basic: Can I Use a 24V Inverter in a 12v Solar Battery system**

Conclusion In conclusion, using a 24V inverter on a 12V battery is not advisable due to voltage mismatch, power limitations, and safety hazards. For a successful solar energy ...

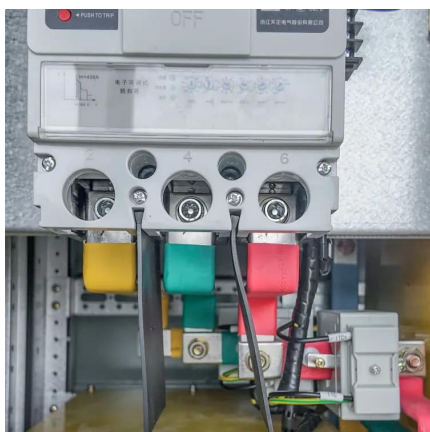
[Learn More](#)



[Can I Put 24 Volts into a 12 Volt Inverter?](#)

In solar PV arrays, RV (recreational vehicle) conversions, and portable power stations, the inverter is the heart of the system--transforming direct current (DC) into alternating current ...

[Learn More](#)



[How To Get 12 Volts From a 24 Volt System](#)





A buck converter is a type of DC-DC converter that steps down voltage from a higher level (24V) to a lower level (12V) while attempting to maintain efficiency. It works by switching a transistor on and off rapidly, ...

[Learn More](#)



[Can a 24V power supply be used to supply a 12V device?](#)

In electronic equipment and power systems, a mismatch between the power supply and the voltage requirements of the equipment is a common problem. Especially in a power supply ...

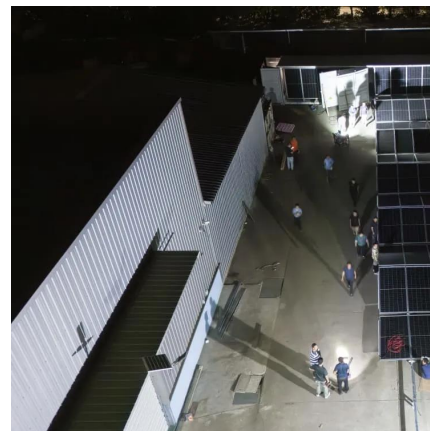
[Learn More](#)



#### **Can I Run A 12V Inverter On A 24V Battery? Solutions And ...**

To use a 12V inverter with a 24V battery, a DC-DC buck converter can be employed. This device reduces the 24V input down to 12V for the inverter, ensuring safe and ...

[Learn More](#)



[Can You Use a 24 volt inverte With a 12V Battery System?](#)

In this guide, we'll unpack why the mismatch hurts, safe workarounds, gear lists, cost math, and simple checks so you power up without smoke. 24 Volt Inverter on 12V Battery: ...

[Learn More](#)



[Can I Run a 12V Inverter on a 24V Battery?](#)



Application Scenario: Provide power support in a small store or temporary work site. System Options: Inverter: Use a high power 12V inverter with 2000W and above to ...

[Learn More](#)



[Can a 24V power supply be used to supply a ...](#)

In electronic equipment and power systems, a mismatch between the power supply and the voltage requirements of the equipment is a common problem. Especially in a power supply environment, technicians may encounter a ...

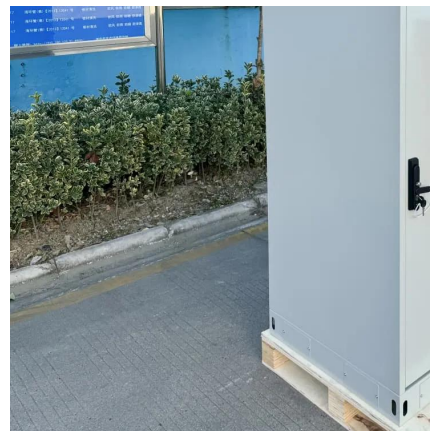
[Learn More](#)



[Can a 24v inverter be plugged into a 12v power supply](#)

Can a power inverter work with a 24V battery?  
While affordable power inverters are available for use with 24V batteries and battery banks, other useful items are much more expensive if rated ...

[Learn More](#)



## Contact Us

---

For catalog requests, pricing, or partnerships, please visit:  
<https://fundacjawandea-imk.pl>



## Scan QR Code for More Information



<https://fundacjawandea-imk.pl>