

Can Huawei be used to connect the inverter of Asmara solar container communication station to the grid





Overview

Can the teleport connect to Huawei inverters?

The Teleport can also connect to Huawei Inverters with system requirements as described in the Solar Inverter Modbus Interface Definitions document. You can connect using Modbus TCP over ethernet (recommended for SmartLoggers) or Modbus RTU using the RS485 serial interface (recommended for inverters).

Can Huawei inverter read energy meter data?

If you connect your energy meter to Huawei inverter, the controller will be able to read the grid data. We recommend doing a factory reset of the Huawei inverter before adding it to the SmartgridOne Controller. This ensures a clean initial connection and can prevent connection issues.

Do all Huawei sun2000 inverters have communication interfaces?

Not all communication interfaces may be present on all inverters. Check this on your inverter. Update 2025: As far as known all Huawei SUN2000 inverters with communication possibilities are supported. If you connect your energy meter to Huawei inverter, the controller will be able to read the grid data.

Can I connect my energy meter to a Huawei sun2000 inverter?

Check this on your inverter. Update 2025: As far as known all Huawei SUN2000 inverters with communication possibilities are supported. If you connect your energy meter to Huawei inverter, the controller will be able to read the grid data. We recommend doing a factory reset of the Huawei inverter before adding it to the SmartgridOne Controller.



Can Huawei be used to connect the inverter of Asmara solar contain



SUN2000

FE Communication (Optional) FE communication is mainly used in distributed rooftop scenarios with a small number of inverters. The inverter can directly connect to the PC over the Ethernet ...

[Learn More](#)



[Huawei SUN2000 inverters . Eniris Documentation](#)

We recommend doing a factory reset of the Huawei inverter before adding it to the SmartgridOne Controller. This ensures a clean initial connection and can prevent connection ...

[Learn More](#)



[Huawei Smart Dongle-4G](#)

Connect Inverters and Data Service Via 4G connection, Smart Dongle supports up to 10 inverters to communicate with the solar management system through hassle-free plug and play. Once ...

[Learn More](#)

[Ultimate Guide 2023: How to Connect Solar ...](#)

Know how to connect a solar panel to inverter for efficient, renewable energy at home. Unfold the benefits and optimization methods for solar power systems.

[Learn More](#)



[FusionSolar Smart PV Management System Connection User ...](#)

Purpose This document describes how to connect inverters to the FusionSolar Smart PV Management System through the Smart Dongle (SDongleA or SDongleB, also referred to as ...

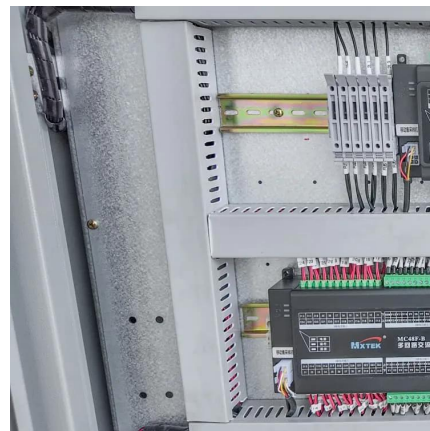
[Learn More](#)



[HUAWEI FusionSolar App Quick Guide 2023](#)

Note: Before commissioning a commercial inverter, connect the 4G Smart Dongle to identify parameters. If the indicator status is normal, remove the Smart Dongle, and then ...

[Learn More](#)



How do I configure a (hybrid) Huawei inverter with optimizers?

Learn how to configure a Huawei inverter with optimizers, battery, and EV charger via FusionSolar, including physical installation and smart setup.

[Learn More](#)





[Huawei Smart Dongle-4G](#)

Connect Inverters and Data Service Via 4G connection, Smart Dongle supports up to 10 inverters to communicate with the solar management ...

[Learn More](#)



Ultimate Guide 2023: How to Connect Solar Panel to Inverter , HUAWEI

Know how to connect a solar panel to inverter for efficient, renewable energy at home. Unfold the benefits and optimization methods for solar power systems.

[Learn More](#)



[How do I configure a Huawei inverter and resolve faults?](#)

A Huawei hybrid inverter is a type of inverter that converts solar energy (DC) into grid power (AC) and also supports battery storage for storing excess energy.

[Learn More](#)



Huawei

The Teleport can also connect to Huawei Inverters with system requirements as described in the Solar Inverter Modbus Interface Definitions document. You can connect using Modbus TCP ...

[Learn More](#)



[SDongleA-05 Smart Dongle Quick Guide \(WLAN-FE\)](#)

SDongleA-05 (Dongle for short) is a smart communications expansion module that works with Huawei inverters to implement communication between inverters and the ...

[Learn More](#)



Contact Us

For catalog requests, pricing, or partnerships, please visit:
<https://fundacjawandea-imk.pl>

Scan QR Code for More Information



<https://fundacjawandea-imk.pl>