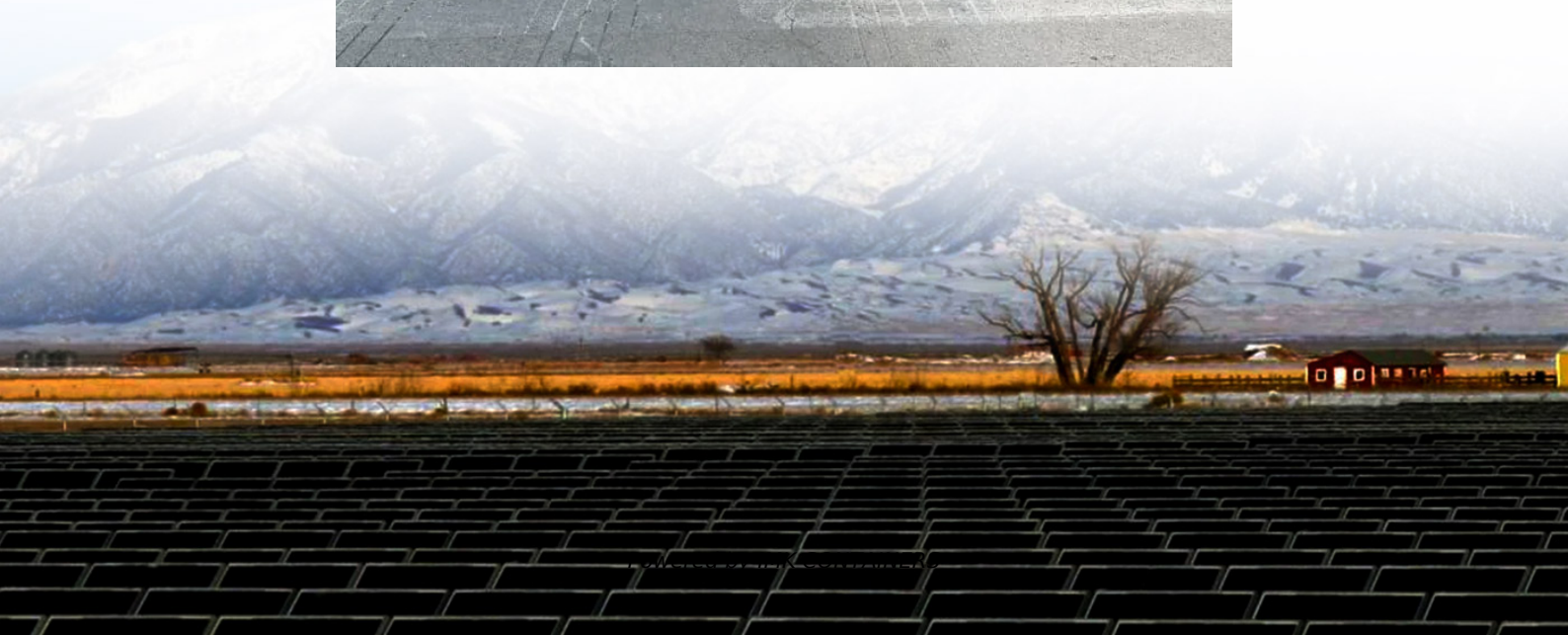


Brief description of wind power source for base stations





Overview

What is wind power?

Wind power is a form of energy conversion in which turbines convert the kinetic energy of wind into mechanical or electrical energy that can be used for power. Wind power is considered a form of renewable energy. Modern commercial wind turbines produce electricity by using rotational energy to drive a generator.

How do wind power stations work?

A wind power station, often known as a wind farm, captures wind's kinetic energy and turns it into electricity. Here's an explanation of how do wind power stations work internally: 1. Wind Turbines: Wind turbines are the principal component of a wind power facility. They consist of enormous blades attached to a hub installed on top of a tall tower.

Is wind energy a viable alternative to thermal power stations?

In many locations, generating electricity from wind energy offers a cost-effective alternative to thermal power stations. It has a lower impact on the environment and climate, reduces dependence on fossil fuel imports and increases security of energy supply .

Do wind-based power stations reduce energy imports?

More specifically, the operation of wind-based power stations first of all reduces the energy imports (oil, natural gas, coal, etc.) for almost all energy-importing industrialized countries contributing to annual exchange loss reduction.



Brief description of wind power source for base stations



Wind Energy

Scientists and engineers are using energy from the wind to generate electricity. Wind energy, or wind power, is created using a wind turbine.

[Learn More](#)

Wind Power Station

Wind power stations are facilities that generate electricity by harnessing wind energy through the use of wind turbines, as evidenced by the increasing capacity of such stations in various ...

[Learn More](#)



[How Do Wind Power Stations Work? A ...](#)

Wind power stands out as a leader in pursuing sustainable energy sources. Wind power plants, often known as wind farms, have become symbols of the renewable energy revolution. But what precisely ...

[Learn More](#)



[Wind power , Description, Renewable Energy. Uses, ...](#)

Wind power is a form of energy conversion in which turbines convert the kinetic energy of wind into mechanical or electrical energy that can be used for power. Wind power is ...



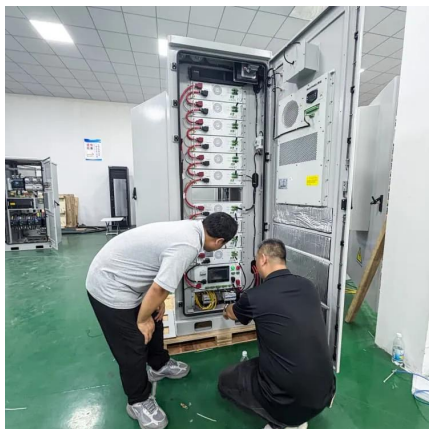
[Learn More](#)



[What is wind energy? . McKinsey](#)

Many other countries are pursuing offshore-wind power, including Azerbaijan, Brazil, Canada, Colombia, India, Oman, the Philippines, Sri Lanka, and Trinidad and Tobago. Learn ...

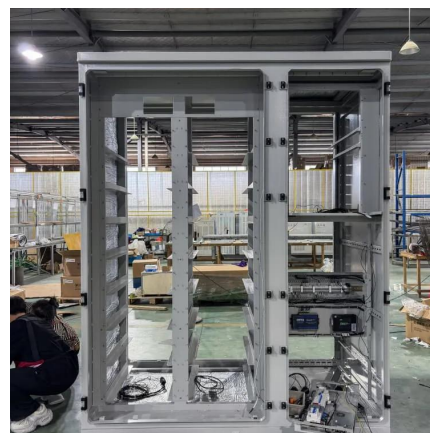
[Learn More](#)



[What is wind energy? . McKinsey](#)

Many other countries are pursuing offshore-wind power, including Azerbaijan, Brazil, Canada, Colombia, India, Oman, the Philippines, Sri Lanka, and Trinidad and Tobago. Learn more about our Oil & Gas and ...

[Learn More](#)



[National Wind Watch . The Grid and Industrial Wind Power](#)

The preferred source that wind power may replace on the grid is hydro power, which is already carbon dioxide free. If a conventional source is replaced, it may simply be ramped down or ...

[Learn More](#)





Wind Energy

Wind power is the conversion of wind energy into electricity or mechanical energy using wind turbines. The power in the wind is extracted by allowing it to blow past moving blades that exert torque on a rotor.

[Learn More](#)



[DESIGN AND SIMULATION OF WIND TURBINE ENERGY...](#)

Abstract- The increasing demand for wireless communication services in rural areas has necessitated the installation of more base stations. The challenge in these regions ...

[Learn More](#)



Solar-Wind Hybrid Power for Base Stations: Why It's Preferred

For base stations that cannot be covered by the power grid, it is the only sustainable power supply solution. For base stations with unstable power grids: It is a ...

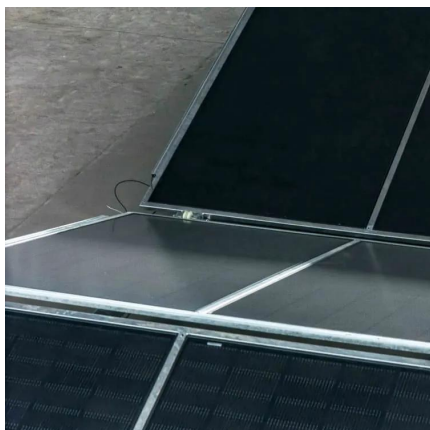
[Learn More](#)



[Renewable Energy Sources for Power Supply of Base ...](#)

Abstract -- An overview of research activity in the area of powering base station sites by means of renewable energy sources is given. It is shown that mobile network ...

[Learn More](#)





Wind Energy

Wind power is the conversion of wind energy into electricity or mechanical energy using wind turbines. The power in the wind is extracted by allowing it to blow past moving blades that ...

[Learn More](#)



[How Do Wind Power Stations Work? A Detailed Look Inside](#)

Wind power stands out as a leader in pursuing sustainable energy sources. Wind power plants, often known as wind farms, have become symbols of the renewable energy ...

[Learn More](#)



Contact Us

For catalog requests, pricing, or partnerships, please visit:
<https://fundacjawandea-imk.pl>

Scan QR Code for More Information



<https://fundacjawandea-imk.pl>